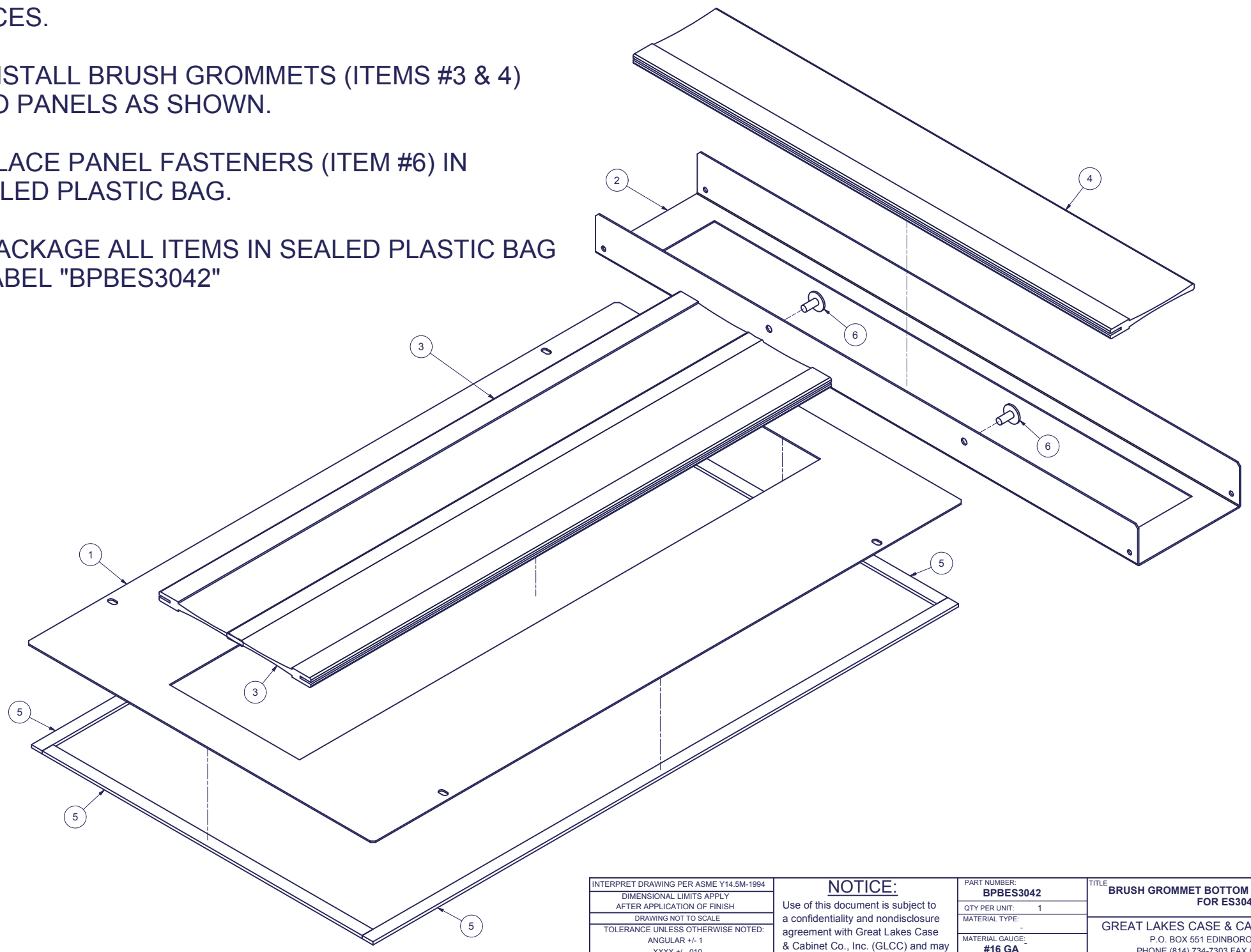
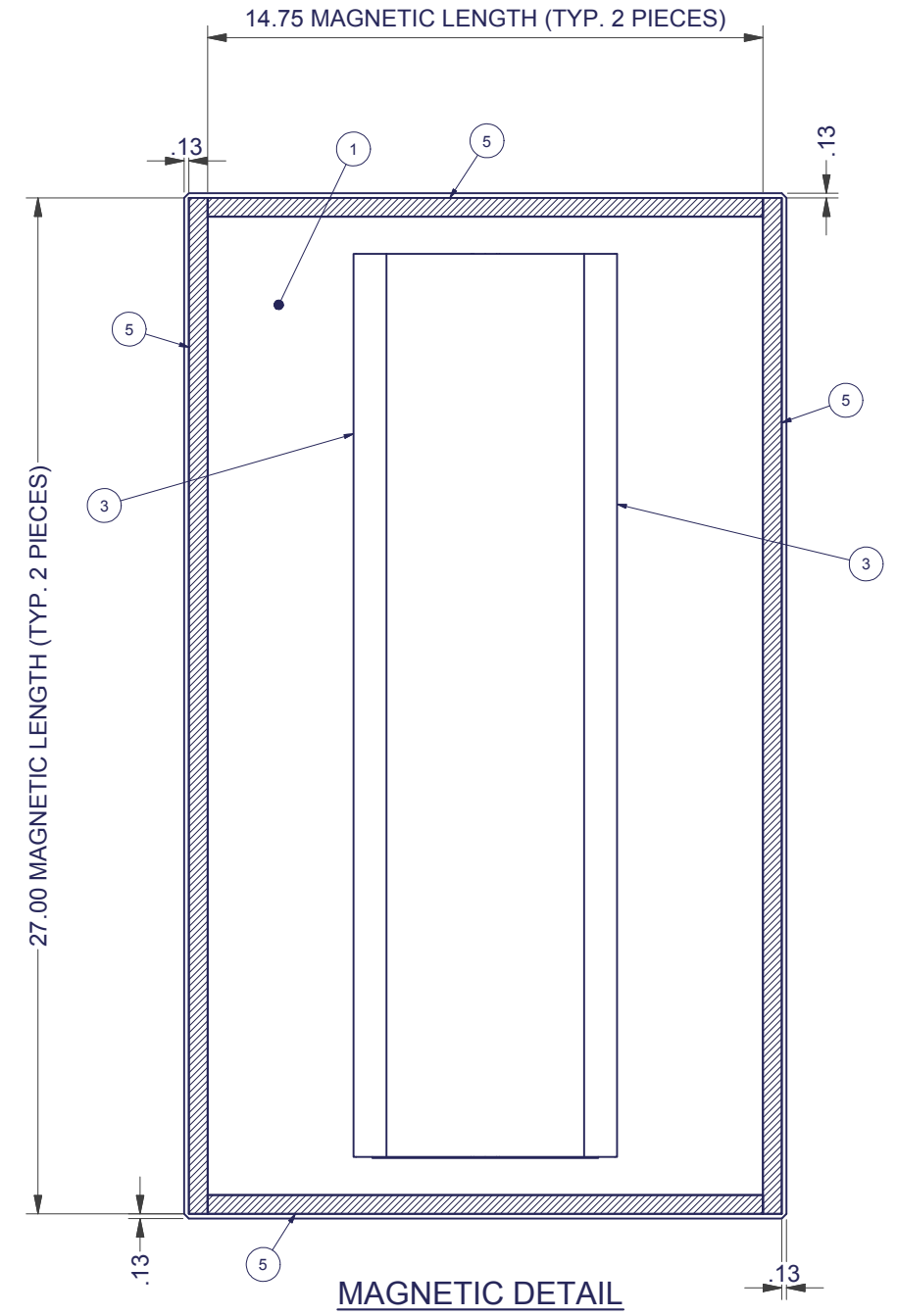


REVISION HISTORY			
REV	DESCRIPTION	DATE	APPROVED
0	ECO-02558	6/8/2009	WSS

Bill of Material					
ITEM	PART NUMBER	QTY	DESCRIPTION	FILE NAME	REVISION
1		1	BRUSH GROMMET BOTTOM PANEL, CENTER FOR 30"W ES	I008385.ipt	0
2		1	BRUSH GROMMET BOTTOM PANEL, REAR, FOR 30"W x 42"D ES	I008386.ipt	0
3		2	BRUSH GROMMET FOR CENTER OPENING ES	I008382.ipt	0
4		1	BRUSH GROMMET FOR REAR OPENING 30"W ES	I008387.ipt	0
5	XM01	83.5"	1/8" x 1/2" MAGNETIC GASKET WITH PSA	"Varies"	-
6	30063008-05004D	2	PANEL FASTENER, TUFLOK, ITW-FASTEX. OR EQUIV.	30063008-05004D.ipt	-

**SPECIAL NOTES:**

1. APPLY MAGNETIC (ITEM #5) TO CENTER BOTTOM PANEL (ITEM #1) PER MAGNETIC DETAIL. MAGNETIC SHOULD HAVE SHARP CUT EDGES & REMAIN PARALLEL TO PANEL EDGES. DO NOT SPLICE - USE CONTINUOUS LENGTH PIECES.
2. INSTALL BRUSH GROMMETS (ITEMS #3 & 4) INTO PANELS AS SHOWN.
3. PLACE PANEL FASTENERS (ITEM #6) IN SEALED PLASTIC BAG.
4. PACKAGE ALL ITEMS IN SEALED PLASTIC BAG & LABEL "BPBES3042"



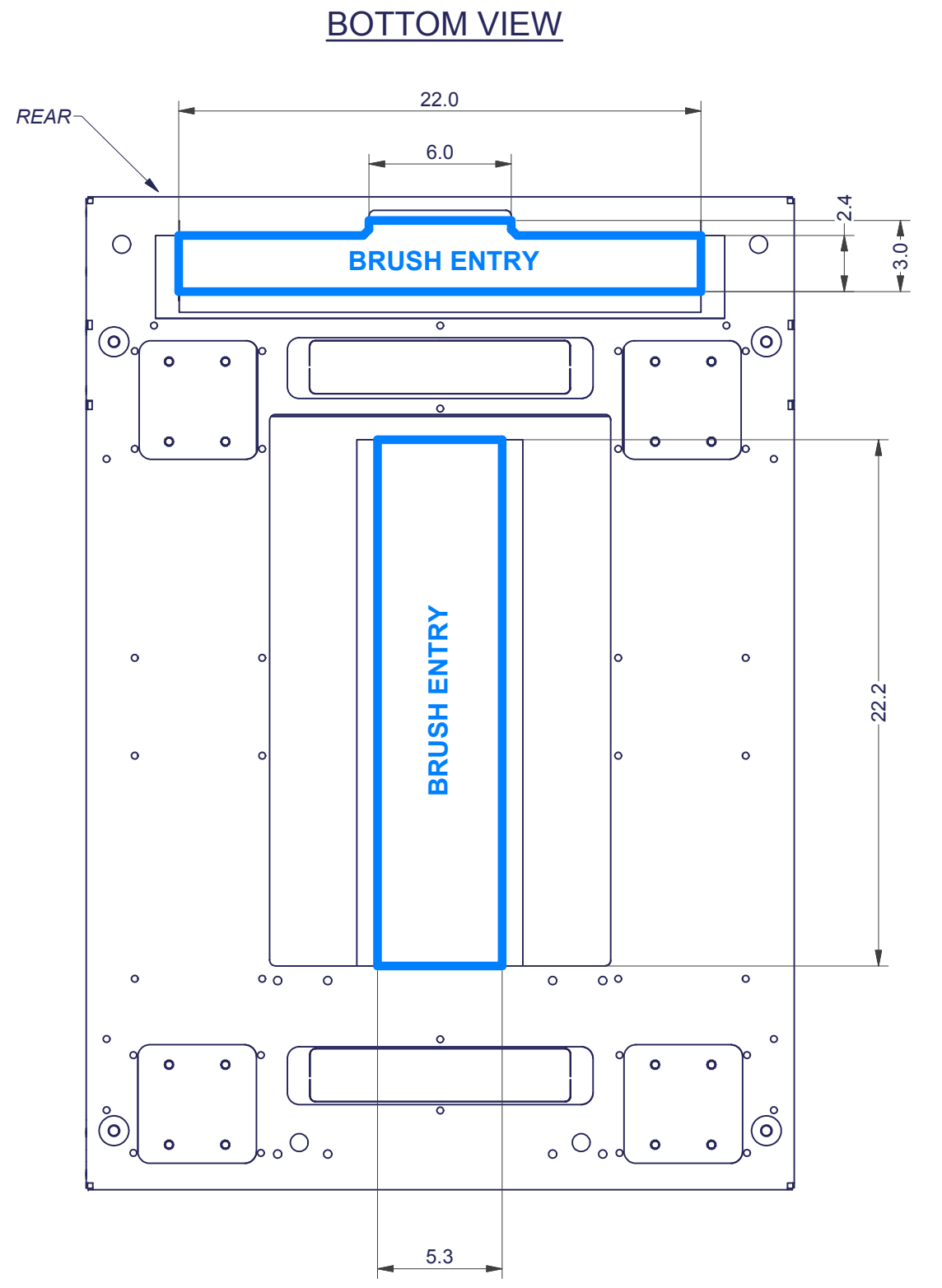
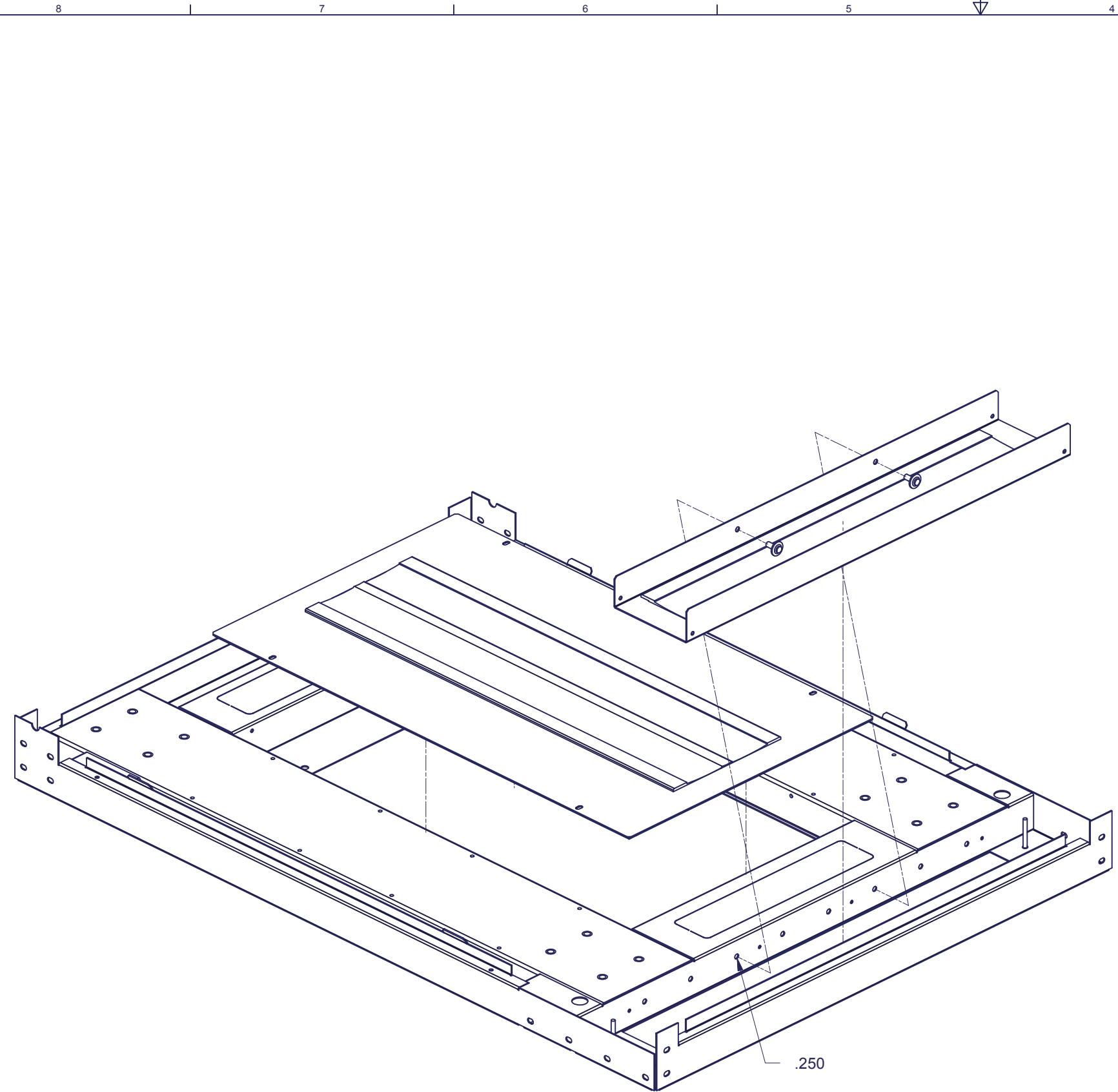
INTERPRET DRAWING PER ASME Y14.5M-1994  
 DIMENSIONAL LIMITS APPLY AFTER APPLICATION OF FINISH  
 DRAWING NOT TO SCALE  
 TOLERANCE UNLESS OTHERWISE NOTED:  
 ANGULAR +/- .1  
 .XXXX +/- .010  
 .XXX +/- .015  
 .XX +/- .030  
 .X FOR REF. ONLY  
 UNLESS OTHERWISE SPECIFIED ALL DIMENSIONS ARE IN INCHES

**NOTICE:**  
 Use of this document is subject to a confidentiality and nondisclosure agreement with Great Lakes Case & Cabinet Co., Inc. (GLCC) and may not be reproduced, disclosed or utilized in whole or in part without prior written authorization from GLCC.

PART NUMBER: **BPBES3042**  
 QTY PER UNIT: 1  
 MATERIAL TYPE:  
 MATERIAL GAUGE: **#16 GA**  
 FINISH:  
 DRAWN: JAL DATE: 5/20/2009  
 CHECKED & APP: WSS DATE: 6/8/2009

TITLE: **BRUSH GROMMET BOTTOM PANEL ASSEMBLY FOR ES3042**  
 GREAT LAKES CASE & CABINET CO., INC.  
 P.O. BOX 551 EDINBORO, PA 16412  
 PHONE (814) 734-7303 FAX (814) 734-3907  
 E-MAIL glcc@greatcabinets.com  
 DWG NO: **1008384** REV: **0** SHEET: 1 OF 2





INTERPRET DRAWING PER ASME Y14.5M-1994 DIMENSIONAL LIMITS APPLY AFTER APPLICATION OF FINISH DRAWING NOT TO SCALE TOLERANCE UNLESS OTHERWISE NOTED: ANGULAR +/- 1 .XXXX +/- .010 .XXX +/- .015 .XX +/- .030 .X FOR REF. ONLY	<b>NOTICE:</b> Use of this document is subject to a confidentiality and nondisclosure agreement with Great Lakes Case & Cabinet Co., Inc. (GLCC) and may not be reproduced, disclosed or utilized in whole or in part without prior written authorization from GLCC.	PART NUMBER: <b>BPBES3042</b>	TITLE <b>BRUSH GROMMET BOTTOM PANEL ASSEMBLY FOR ES3042</b>			
		QTY PER UNIT: 1	GREAT LAKES CASE & CABINET CO., INC. P.O. BOX 551 EDINBORO, PA 16412 PHONE (814) 734-7303 FAX (814) 734-3907 E-MAIL glcc@greatcabinets.com			
		MATERIAL TYPE: - MATERIAL GAUGE: - FINISH: -	DRAWN JAL	DATE 5/20/2009	REV 0	SHEET: 2 OF 2
		CHECKED & APP. WSS	DATE 6/17/2009	DWG NO: <b>1008384</b>		



THIRD ANGLE PROJECTION