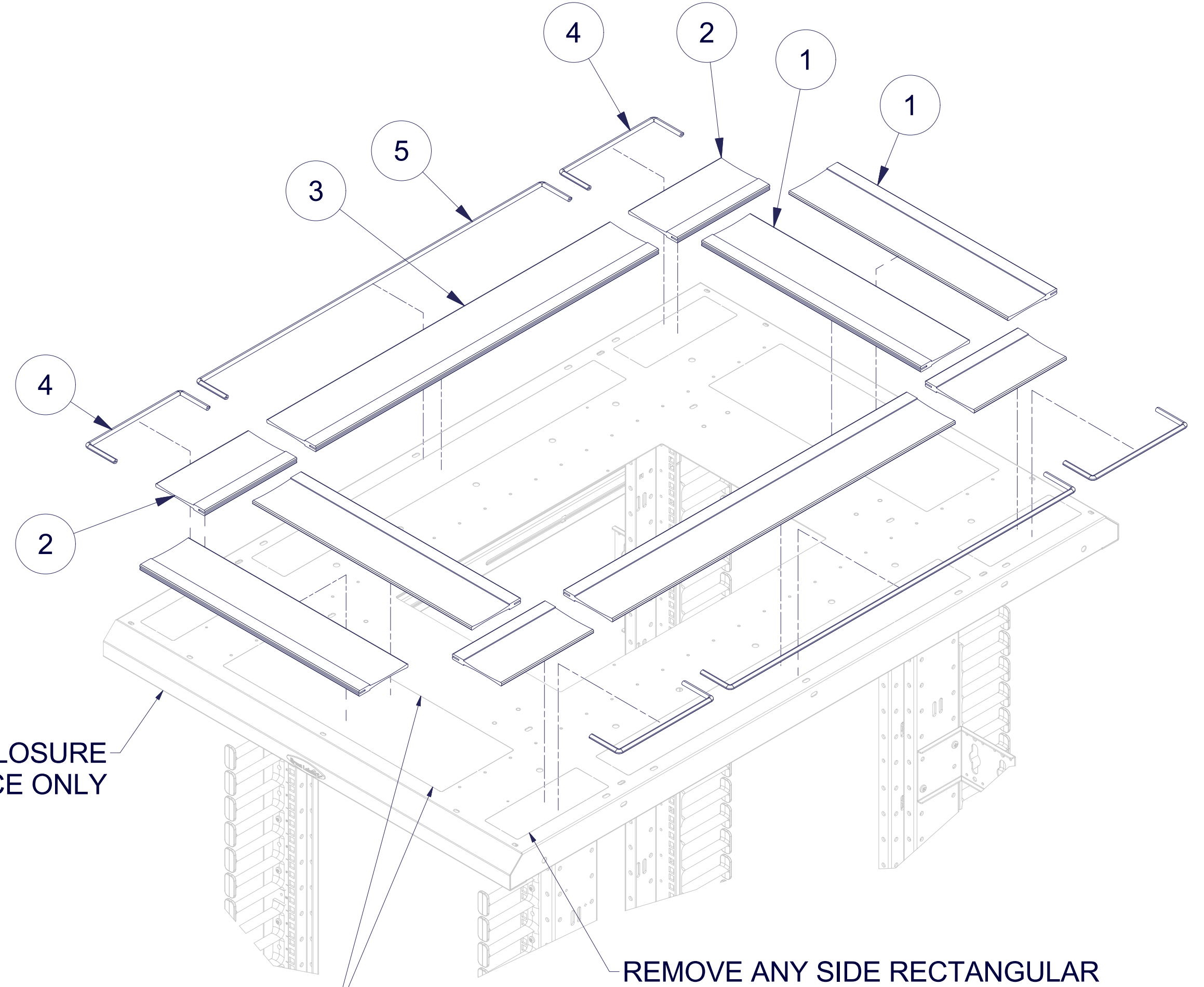
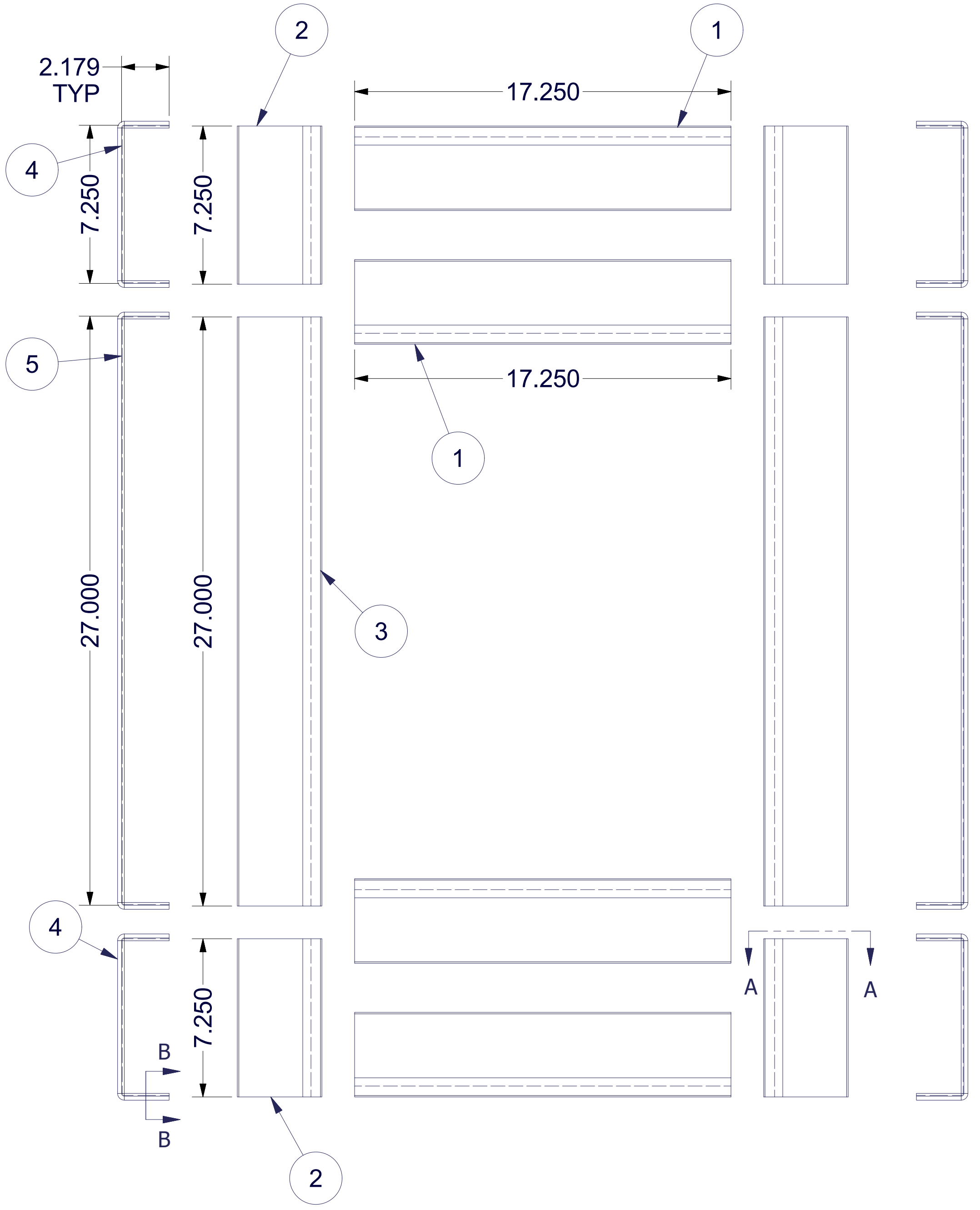


REVISION HISTORY			
REV	DESCRIPTION	DATE	APPROVED
0	ECO-06687	10/9/2015	VL

Bill of Material						
ITEM	PART NUMBER	STOCK #	QTY	DESCRIPTION	FILE NAME	Rev
1	FPVC123072(17.25)		4	BRUSH STRIP, FLEXIBLE PVC, 3" TRIM, CUT 17.25" LG. (TANIS INC.)	FPVC123072(17.25).ipt	-
2	FPVC123072(7.25)		4	BRUSH STRIP, FLEXIBLE PVC, 3" TRIM, CUT 7.25" LG. (TANIS INC.)	FPVC123072(7.25).ipt	-
3	FPVC123072(27)		2	BRUSH STRIP, FLEXIBLE PVC, 3" TRIM, CUT 27" LG. (TANIS INC.)	FPVC123072(27).ipt	-
4	X1002(12.25)		4	'TRIM-LOK' EDGE GROMMET, NEOPRENE RUBBER - CUT TO 12.25"L	EDGE-GASKET-7.25.ipt	-
5	X1002(32)		2	'TRIM-LOK' EDGE GROMMET, NEOPRENE RUBBER - CUT TO 32"L	EDGE-GASKET-27.ipt	-
6	I024930-PRINT		1	COPY OF THIS DRAWING I024930	I024930.idw	-



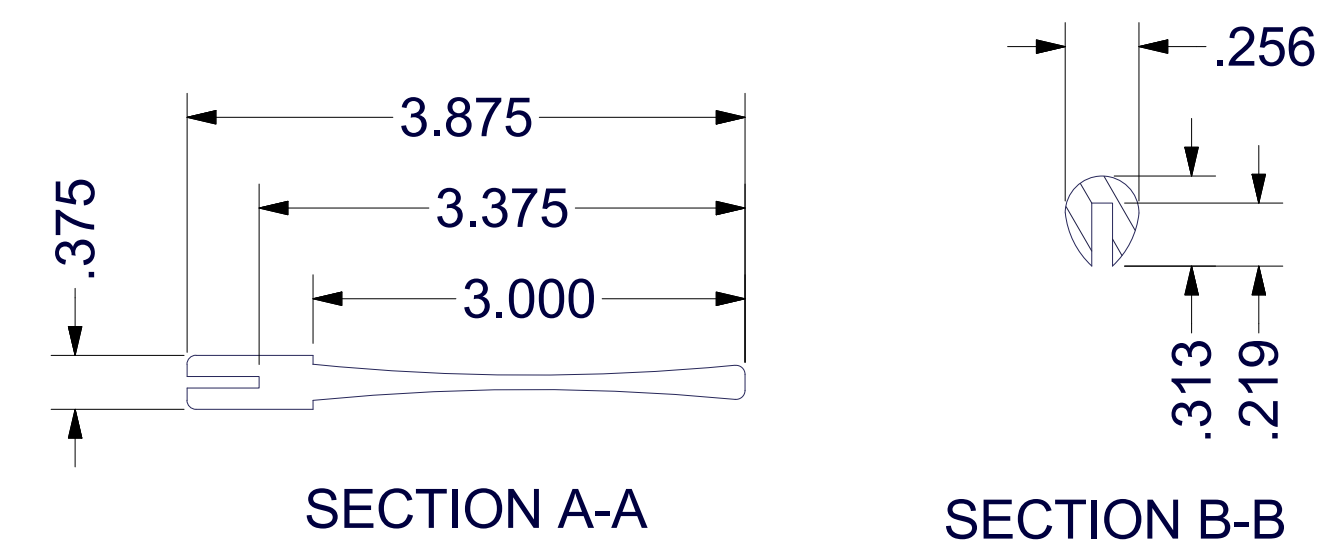
32"W x 48"D ENCLOSURE
SHOWN FOR REFERENCE ONLY

REMOVE ANY FRONT OR BACK
RECTANGULAR KNOCK-OUTS REQUIRED

SLIDE BRUSH GROMMETS
ONTO TWO OPPOSING SIDE EDGES

REMOVE ANY SIDE RECTANGULAR
KNOCK-OUTS REQUIRED. CENTER
THE EDGE GROMMET STRIP
ALONG ONE LONG SIDE AND ROLL IT
INTO POSITION UNTIL FULLY ENGAGED
ALONG THREE ADJOINING EDGES.

THEN SLIDE THE BRUSH GROMMET
ONTO THE REMAINING EDGE.



SPECIAL NOTES:
1) PLACE (10) PIECES OF BRUSH GROMMET, (6) PIECES
OF EDGE GROMMET AND A COPY OF THIS DRAWING
INTO A CORRUGATED PACK.

EST. WEIGHT :
N/A

INTERPRET DRAWING PER ASME Y14.5M-1994
DIMENSIONAL LIMITS APPLY
AFTER APPLICATION OF FINISH
DRAWING NOT TO SCALE
TOLERANCE UNLESS OTHERWISE NOTED:
ANGULAR +/- 1'
.XXXX +/- .010
.XXX +/- .015
.XX +/- .030
.X FOR REF. ONLY
UNLESS OTHERWISE SPECIFIED
ALL DIMENSIONS ARE IN INCHES

NOTICE:
Use of this document is subject to
a confidentiality and nondisclosure
agreement with Great Lakes Case
& Cabinet Co., Inc. (GLCC) and may
not be reproduced, disclosed or
utilized in whole or in part without
prior written authorization from GLCC.

PART NUMBER:
BGT32EN48X200
MATERIAL TYPE:
SEE DETAIL
MATERIAL GAUGE:
FINISH:
DRAWN
VL
CHECKED & APP.
WSS

TITLE
**BRUSH GROMMET TOP PANEL KIT FOR 32"W x
48"D EN**
GREAT LAKES CASE & CABINET CO., INC.
P.O. BOX 551 EDINBORO, PA 16412
PHONE (814) 734-7303 FAX (814) 734-3907
E-MAIL glcc@greatcabinets.com

DWG NO:
I024930
REV
0
SHEET: 1 OF 1