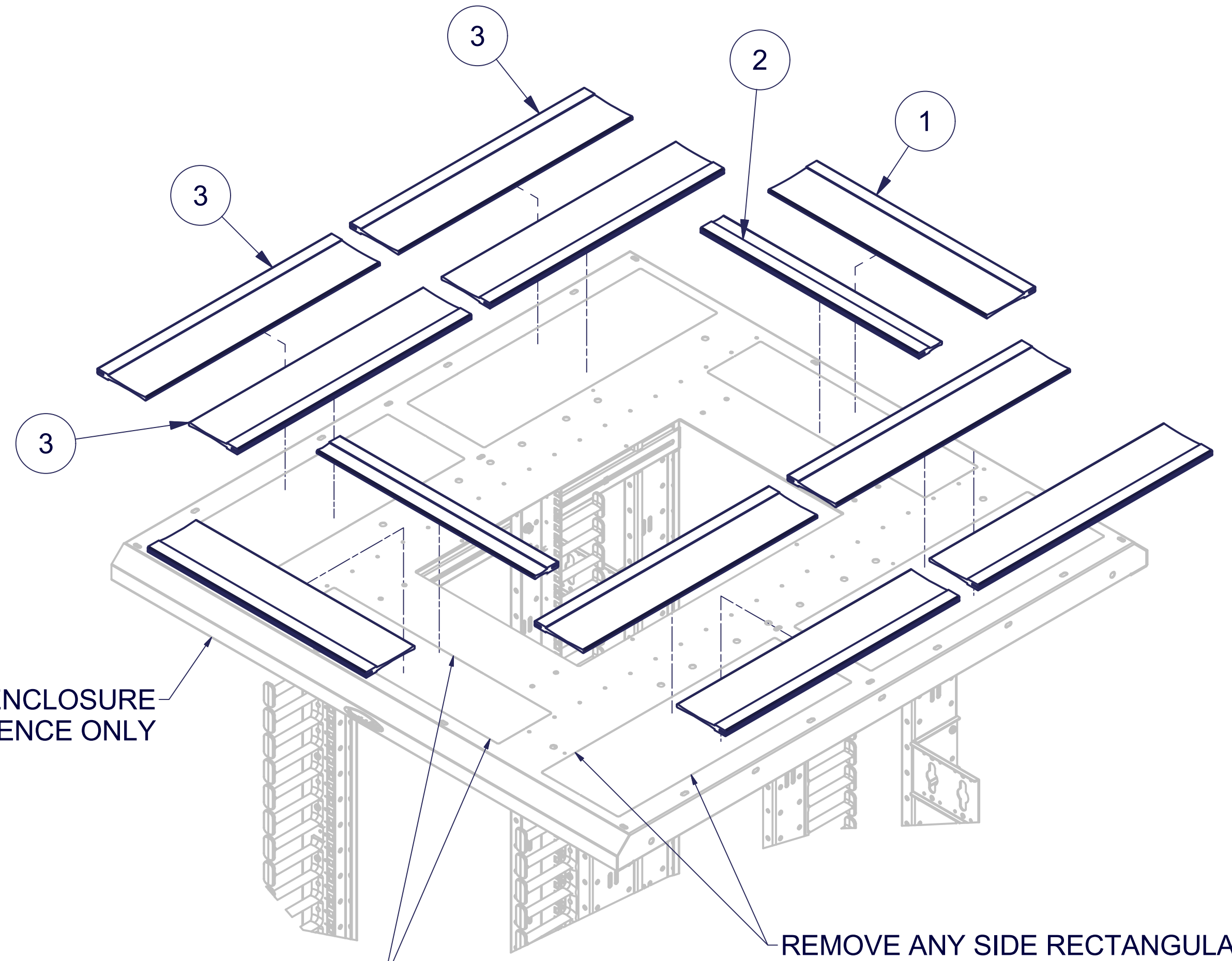
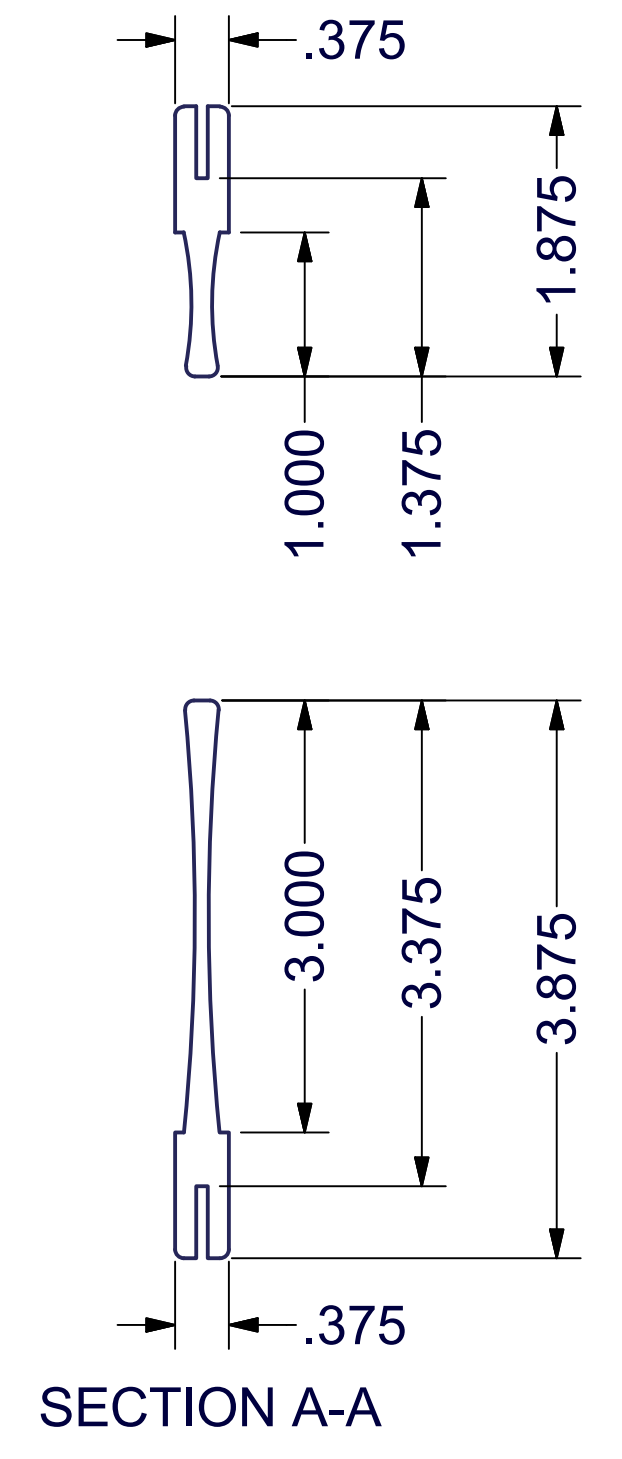
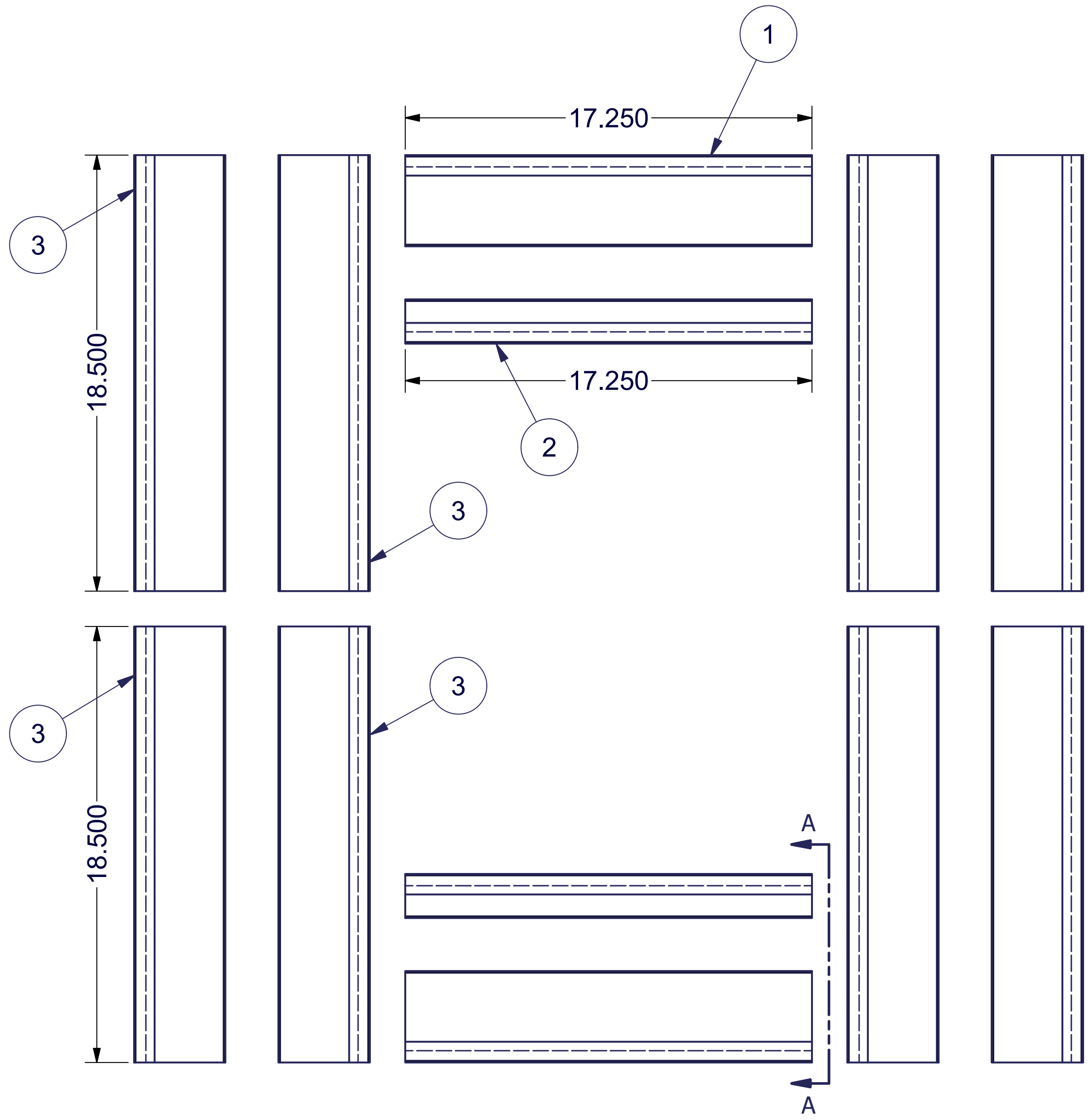


REVISION HISTORY			
REV	DESCRIPTION	DATE	APPROVED
0	ECO-06687	10/9/2015	VL

Bill of Material						
ITEM	PART NUMBER	STOCK #	QTY	DESCRIPTION	FILE NAME	Rev
1		S48-003-17.25	2	BRUSH STRIP, FLEXIBLE PVC, 3" TRIM, 17.25"LG. (TANIS INC.)	S48-003-17.25.ipt	0
2		S48-004-17.25	2	SIDE BRUSH STRIP, FLEXIBLE PVC, 1" TRIM. (TANIS INC.)	S48-004-17.25.ipt	0
3		S48-003-18.50	8	BRUSH GROMMET FOR RAIL KIT	S48-003-18.50.ipt	0
4	I024931-PRINT		1	COPY OF THIS DRAWING I024931	I024931.idw	



40"W x 42"D ENCLOSURE
SHOWN FOR REFERENCE ONLY

REMOVE ANY FRONT OR BACK
RECTANGULAR KNOCK-OUTS REQUIRED

SLIDE BRUSH GROMMETS
ONTO TWO OPPOSING SIDE EDGES

REMOVE ANY SIDE RECTANGULAR
KNOCK-OUTS REQUIRED.

SLIDE BRUSH GROMMETS
ONTO TWO OPPOSING SIDE EDGES.

SPECIAL NOTES:
1) PLACE (12) PIECES OF BRUSH GROMMET AND A COPY OF THIS DRAWING INTO A CORRUGATED PACK.

EST. WEIGHT :
N/A

INTERPRET DRAWING PER ASME Y14.5M-1994
DIMENSIONAL LIMITS APPLY AFTER APPLICATION OF FINISH
DRAWING NOT TO SCALE
TOLERANCE UNLESS OTHERWISE NOTED:
ANGULAR +/- 1'
.XXXX +/- .010
.XXX +/- .015
.XX +/- .030
.X FOR REF. ONLY
UNLESS OTHERWISE SPECIFIED ALL DIMENSIONS ARE IN INCHES

NOTICE:
Use of this document is subject to a confidentiality and nondisclosure agreement with Great Lakes Case & Cabinet Co., Inc. (GLCC) and may not be reproduced, disclosed or utilized in whole or in part without prior written authorization from GLCC.

PART NUMBER:
BGT40EN42X200
MATERIAL TYPE:
SEE DETAIL
MATERIAL GAUGE:
FINISH:
-
DRAWN
VL
CHECKED & APP.
WSS
DATE
10/8/2015
DATE
10/9/2015

TITLE
BRUSH GROMMET TOP PANEL KIT FOR 40"W x 42"D EN
GREAT LAKES CASE & CABINET CO., INC.
P.O. BOX 551 EDINBORO, PA 16412
PHONE (814) 734-7303 FAX (814) 734-3907
E-MAIL glcc@greatcabinets.com
DWG NO:
I024931
REV
0
SHEET: 1 OF 1