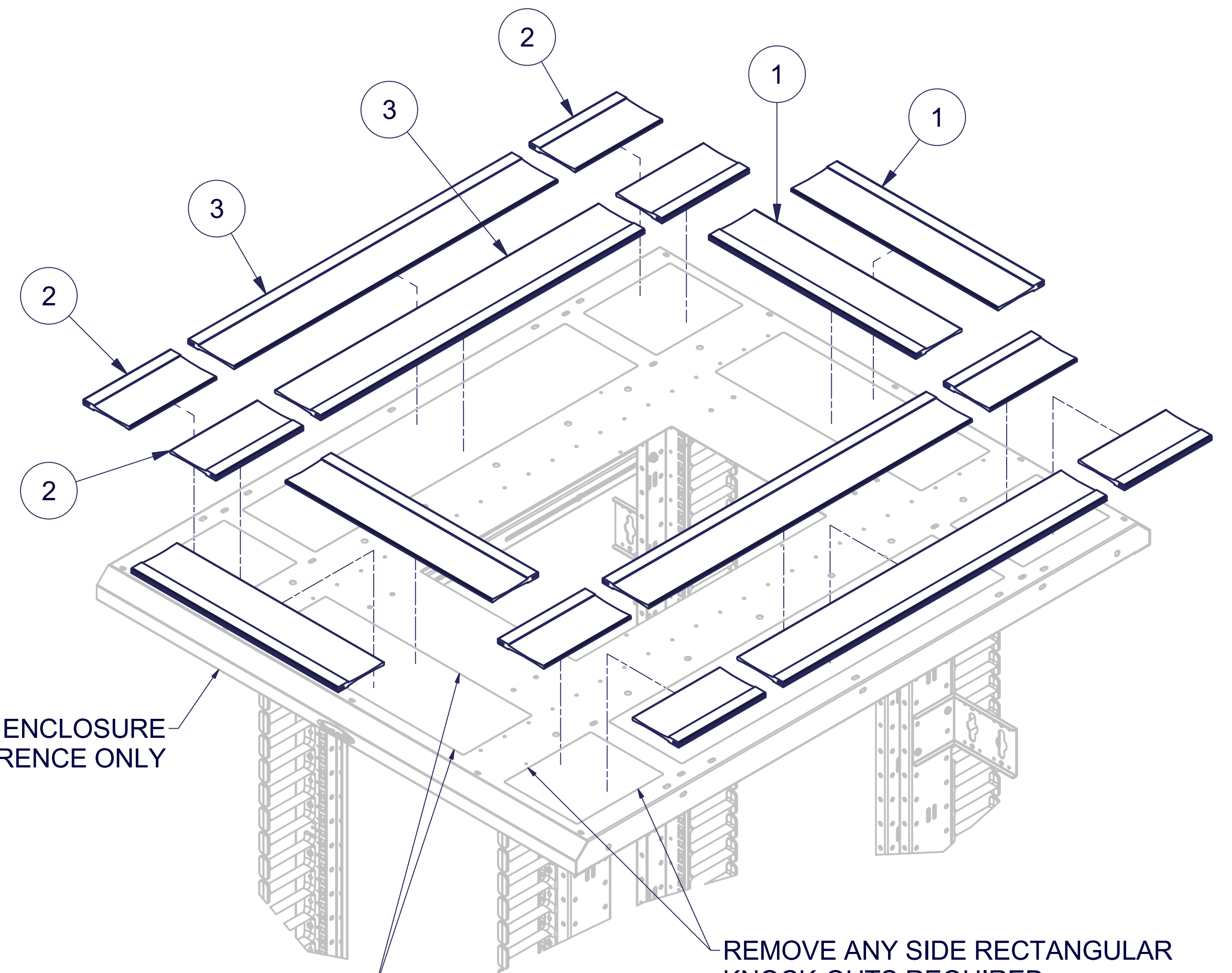
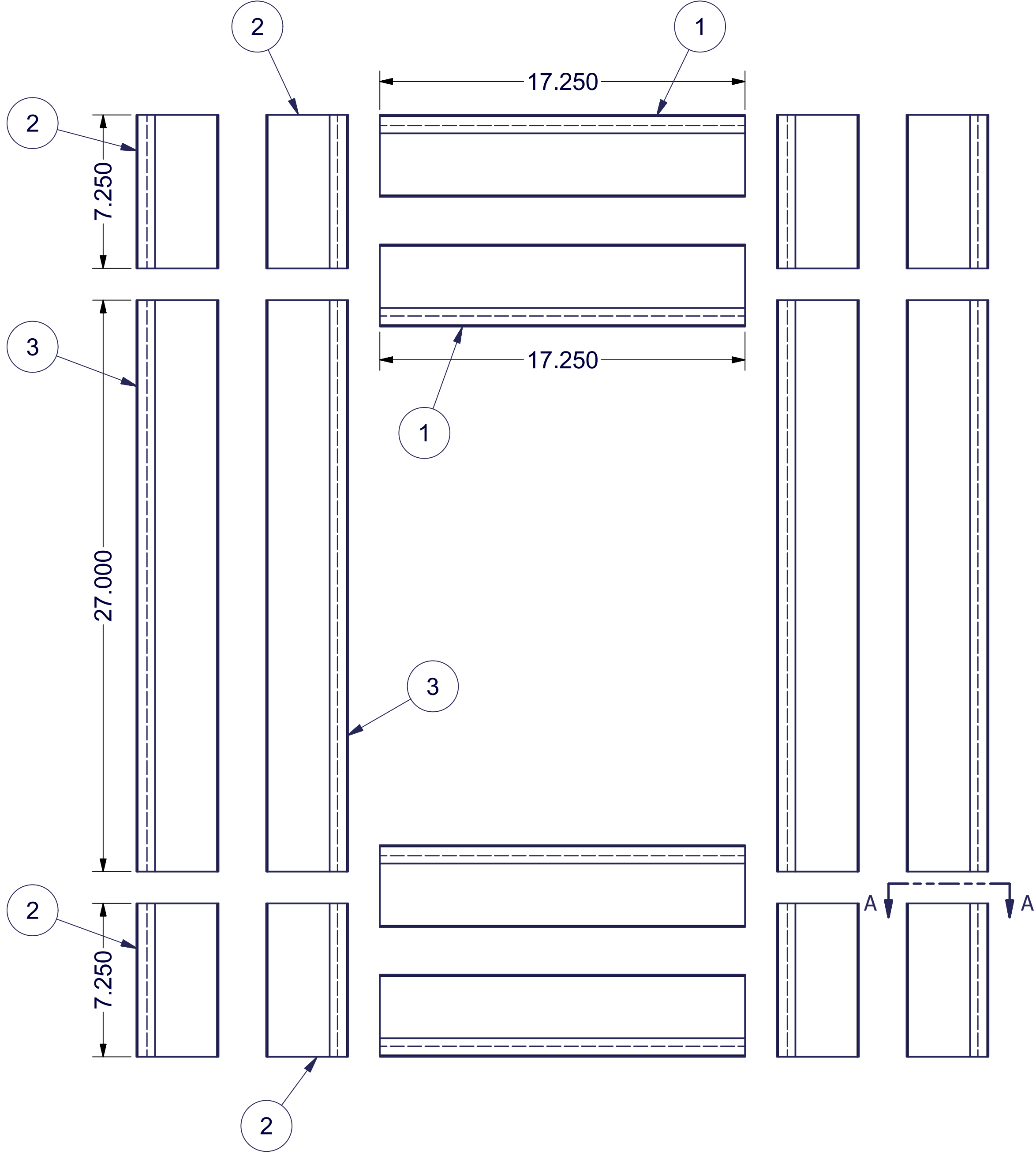


REVISION HISTORY			
REV	DESCRIPTION	DATE	APPROVED
0	ECO-06687	10/9/2015	VL

Bill of Material						
ITEM	PART NUMBER	STOCK #	QTY	DESCRIPTION	FILE NAME	Rev
1		S48-003-17.25	4	BRUSH STRIP, FLEXIBLE PVC, 3" TRIM, 17.25"LG. (TANIS INC.)	S48-003-17.25.ipt	0
2		S48-003-07.25	8	BRUSH STRIP, FLEXIBLE PVC, 3" TRIM, 7.25"LG. (TANIS INC.)	S48-003-07.25.ipt	0
3		S48-003-27.00	4	BRUSH STRIP, FLEXIBLE PVC, 3" TRIM, 27"LG. (TANIS INC.)	S48-003-27.00.ipt	0
4	I024932-PRINT		1	COPY OF THIS DRAWING I024932	I024932.idw	



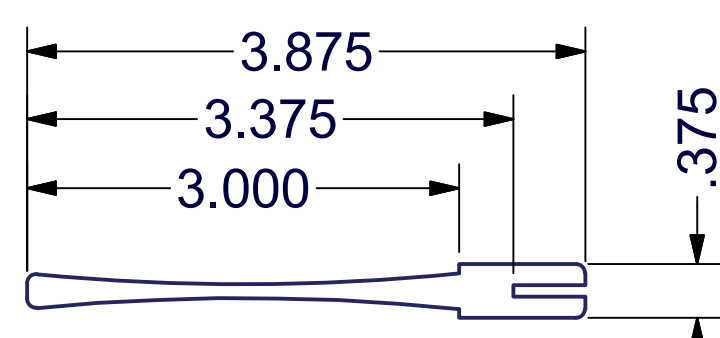
40"W x 48"D ENCLOSURE  
SHOWN FOR REFERENCE ONLY

REMOVE ANY FRONT OR BACK  
RECTANGULAR KNOCK-OUTS REQUIRED

SLIDE BRUSH GROMMETS  
ONTO TWO OPPOSING SIDE EDGES

REMOVE ANY SIDE RECTANGULAR  
KNOCK-OUTS REQUIRED.

SLIDE BRUSH GROMMETS  
ONTO TWO OPPOSING SIDE EDGES.



SECTION A-A

**SPECIAL NOTES:**  
1) PLACE (16) PIECES OF BRUSH GROMMET AND A COPY OF THIS DRAWING INTO A CORRUGATED PACK.

EST. WEIGHT:	N/A
THIRD ANGLE PROJECTION	

INTERPRET DRAWING PER ASME Y14.5M-1994
DIMENSIONAL LIMITS APPLY AFTER APPLICATION OF FINISH
DRAWING NOT TO SCALE
TOLERANCE UNLESS OTHERWISE NOTED:
ANGULAR +/- 1°
.XXXX +/- .010
.XXX +/- .015
.XX +/- .030
.X FOR REF. ONLY
UNLESS OTHERWISE SPECIFIED ALL DIMENSIONS ARE IN INCHES

**NOTICE:**  
Use of this document is subject to a confidentiality and nondisclosure agreement with Great Lakes Case & Cabinet Co., Inc. (GLCC) and may not be reproduced, disclosed or utilized in whole or in part without prior written authorization from GLCC.

PART NUMBER:	BGT40EN48X200
MATERIAL TYPE:	SEE DETAIL
MATERIAL GAUGE:	
FINISH:	
DRAWN:	VL
CHECKED & APP.:	WSS
DATE:	10/8/2015
DATE:	10/9/2015

TITLE:	BRUSH GROMMET TOP PANEL KIT FOR 40"W x 48"D EN
GREAT LAKES CASE & CABINET CO., INC. P.O. BOX 551 EDINBORO, PA 16412 PHONE (814) 734-7303 FAX (814) 734-3907 E-MAIL glcc@greatcabinets.com	
DWG NO:	I024932
REV:	0
SHEET:	1 OF 1