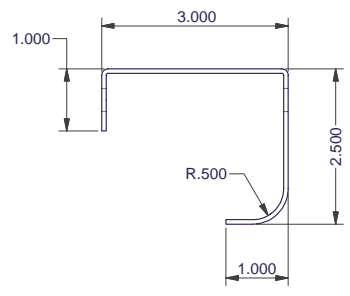
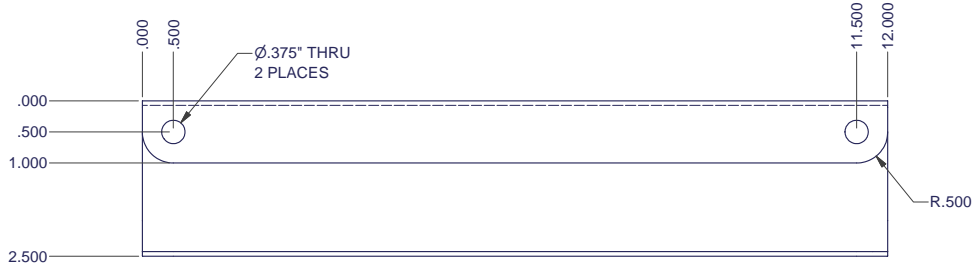
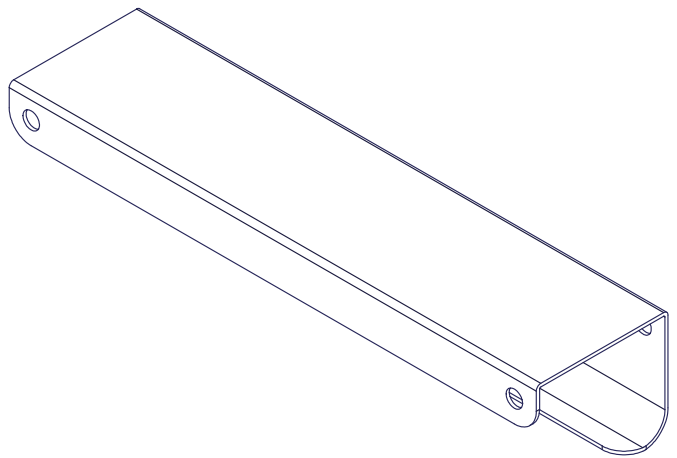
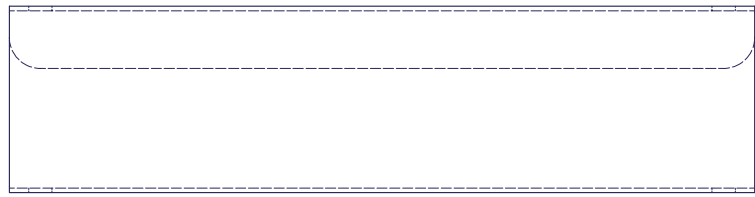


REVISION HISTORY			
REV	DESCRIPTION	DATE	APPROVED
0	ECO-01883	3/5/2007	WSS



SPECIAL NOTES:

- 1) FINISH PER TD-09-103 (POWDER COAT), CLASS B, TEXTURE LEVEL 3, - ALL SURFACES UNLESS OTHERWISE NOTED.
- 2) DIMENSIONS APPLY BEFORE APPLICATION OF FINISH: ADD .005" TO EACH SURFACE FOR INSPECTION.

INTERPRET DRAWING PER ASME Y14.5M-1994
 DIMENSIONAL LIMITS APPLY AFTER APPLICATION OF FINISH
 DRAWING NOT TO SCALE
 TOLERANCE UNLESS OTHERWISE NOTED:
 ANGULAR ± .1°
 .XXX ± .010
 .XX ± .015
 .X ± .030
 X FOR REF. ONLY
 UNLESS OTHERWISE SPECIFIED ALL DIMENSIONS ARE IN INCHES

NOTICE:
 Use of this document is subject to a confidentiality and nondisclosure agreement with Great Lakes Case & Cabinet Co., Inc. (GLCC) and may not be reproduced, disclosed or utilized in whole or in part without prior written authorization from GLCC.

PART NUMBER:	DC#06441T5X100
QTY PER UNIT:	1
MATERIAL TYPE:	C.P.S.
MATERIAL GAUGE:	0.15 GA.
FINISH:	SEE NOTES
DATE:	3/5/07
CHECKED:	JAL
DATE:	3/5/07

TITLE		LADDER RACK MOUNTING BRACKET DETAIL	
		P.O. BOX 551 EDINBORO, PA 16412	
		PHONE (814) 734-7303 FAX (814) 734-3507 E-MAIL: glcc@greatlakes.com	
DWG NO:	I005159	REV:	0
SHEET 1		OF 1	