

GROUND STUD

SOLID BOTTOM PANEL

EACH COMPARTMENT
KEYED UNIQUELY

MESH FRONT AND
REAR DOORS

SOLID SIDE PANEL
SECURED FROM INSIDE
OF ENCLOSURE

GROUND STUD

GL84CL3MM

INTERPRET DRAWING PER ASME Y14.5M-1994
DIMENSIONAL LIMITS APPLY AFTER APPLICATION OF FINISH
DRAWING NOT TO SCALE
TOLERANCE UNLESS OTHERWISE NOTED:
ANGULAR +/- .1°
.XXX +/- .010
.XX +/- .030
.X FOR REF. ONLY
UNLESS OTHERWISE SPECIFIED ALL DIMENSIONS ARE IN INCHES

NOTICE:

Use of this document is subject to a confidentiality and nondisclosure agreement with Great Lakes Case & Cabinet Co., Inc. (GLCC) and may not be reproduced, disclosed or utilized in whole or in part without prior written authorization from GLCC.

PART NUMBER: GL84CL3MM	TITLE
QTY PER UNIT: 1	84"H x 28"W x 36"D, THREE-DOOR CO-LOCATION CABINET
MATERIAL TYPE: CRS	GREAT LAKES CASE & CABINET CO., INC. P.O. BOX 551 EDINBORO, PA 16412 PHONE (814) 734-7303 FAX (814) 734-3907 E-MAIL glcc@greatcabinets.com
MATERIAL GAUGE: VARIES	
FINISH: BLACK POWDER COAT	
DRAWN JL	DATE 8/7/2008
CHECKED & APP. WSS	DATE 5/5/2011

DWG NO. GL84CL3MM	REV 6	SHEET: 1 OF 3
-----------------------------	-----------------	---------------



THIRD ANGLE
PROJECTION

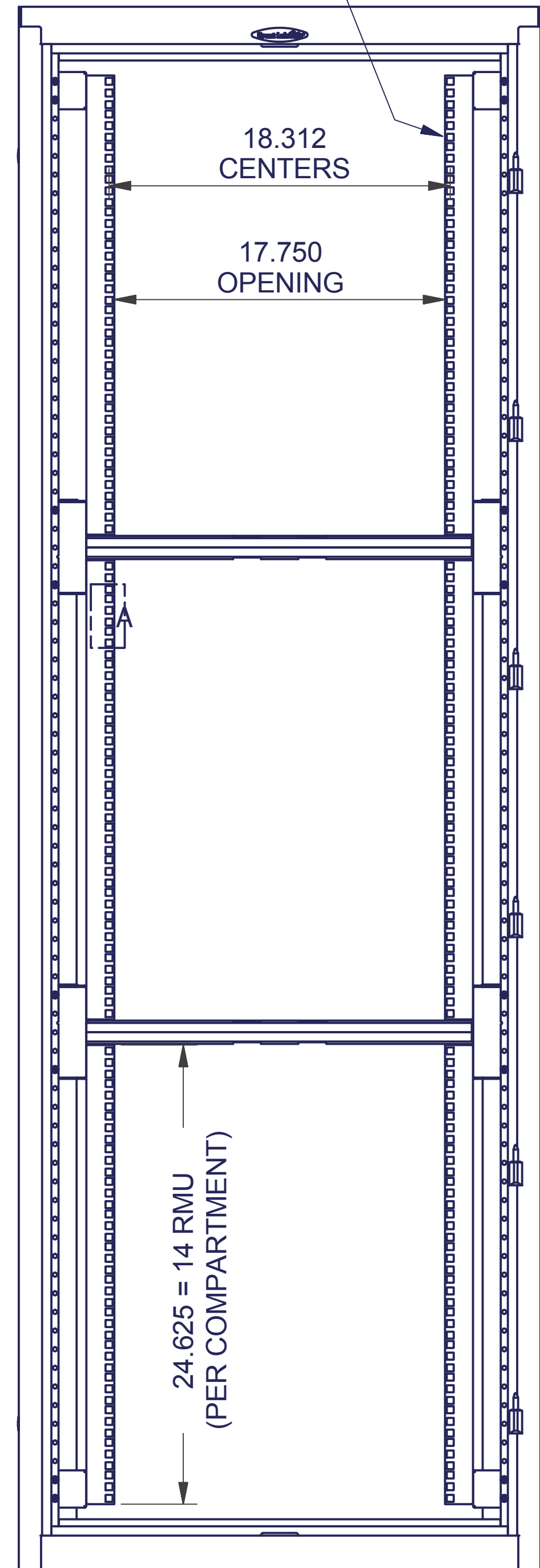
8 7 6 5 4 3 2 1

FULLY ADJUSTABLE 19"EIA
EQUIPMENT RAILS, 3/8" SQ.

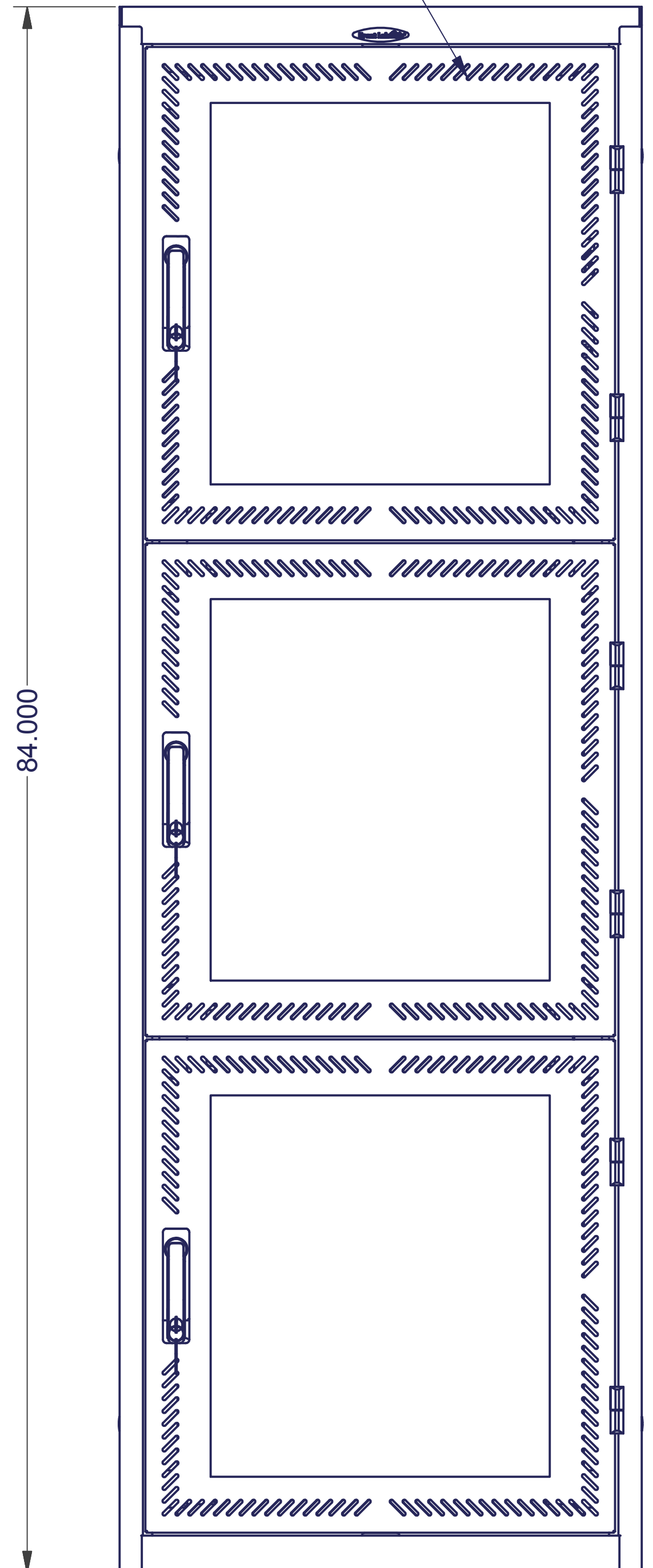
PERIMETER VENTED MESH DOOR

CABLE MANAGEMENT RACEWAYS
SECURE FROM EACH COMPARTMENT
(CABLE ENTRY FROM BOTTOM SHOWN)

PERIMETER VENTED MESH DOOR

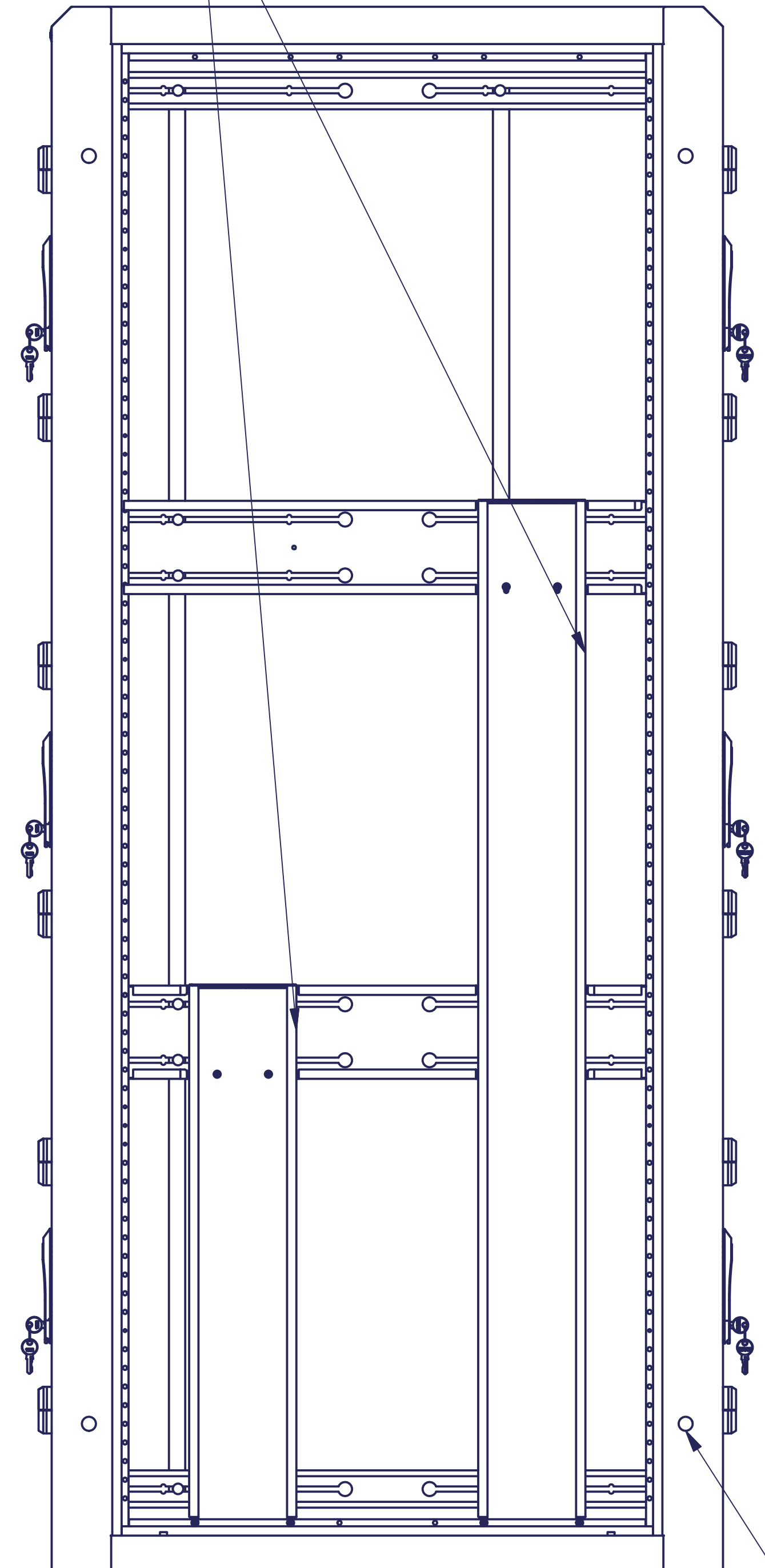


FRONT VIEW
DOORS REMOVED FOR CLARITY

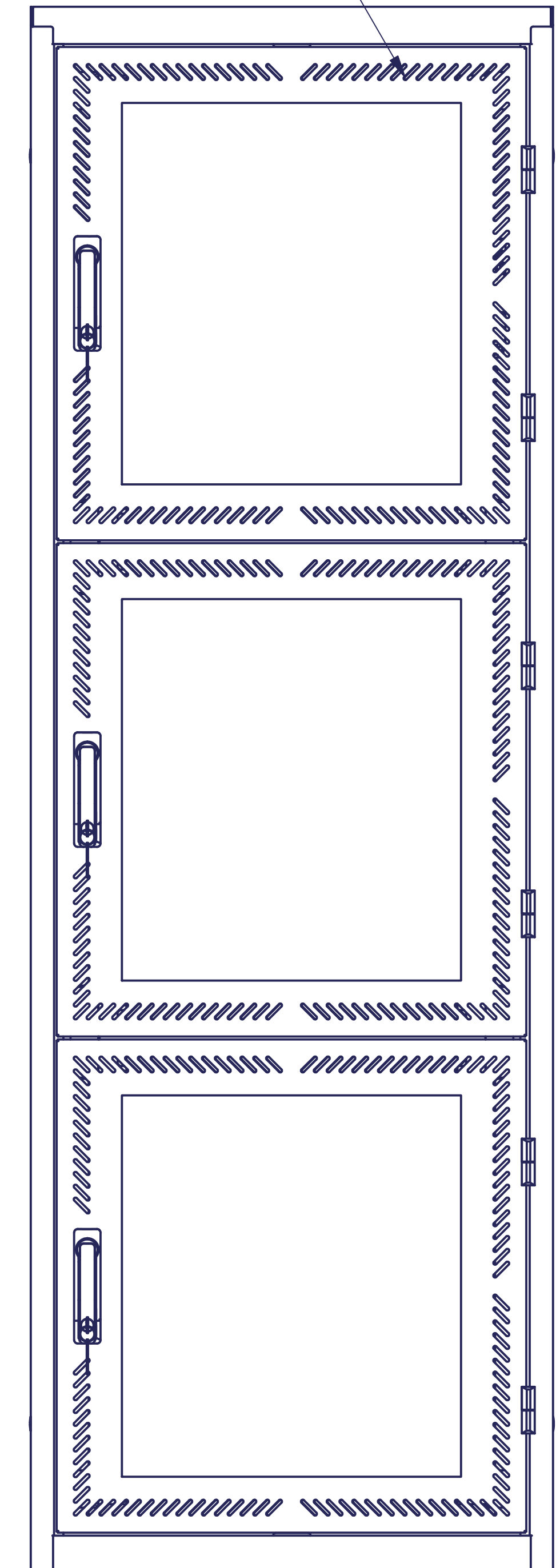


FRONT VIEW
28.000

84.000



RIGHT SIDE VIEW
SIDE PANELS REMOVED
FOR CLARITY
DEPTH - SEE TABLE



REAR VIEW

NETWORKING HOLES FOR
OPTIONAL G101 HARDWARE

ENCLOSURE DEPTHS	
PART NUMBER	DEPTH
GL8436CL3MM	36 IN
GL8442CL3MM	42 IN
GL8448CL3MM	48 IN

INTERPRET DRAWING PER ASME Y14.5M-1994
DIMENSIONAL LIMITS APPLY
AFTER APPLICATION OF FINISH
DRAWING NOT TO SCALE
TOLERANCE UNLESS OTHERWISE NOTED:
ANGULAR +/- .1'
.XXXX +/- .010
.XXX +/- .015
.XX +/- .030
.X FOR REF. ONLY

NOTICE:
Use of this document is subject to a confidentiality and nondisclosure agreement with Great Lakes Case & Cabinet Co., Inc. (GLCC) and may not be reproduced, disclosed or utilized in whole or in part without prior written authorization from GLCC.

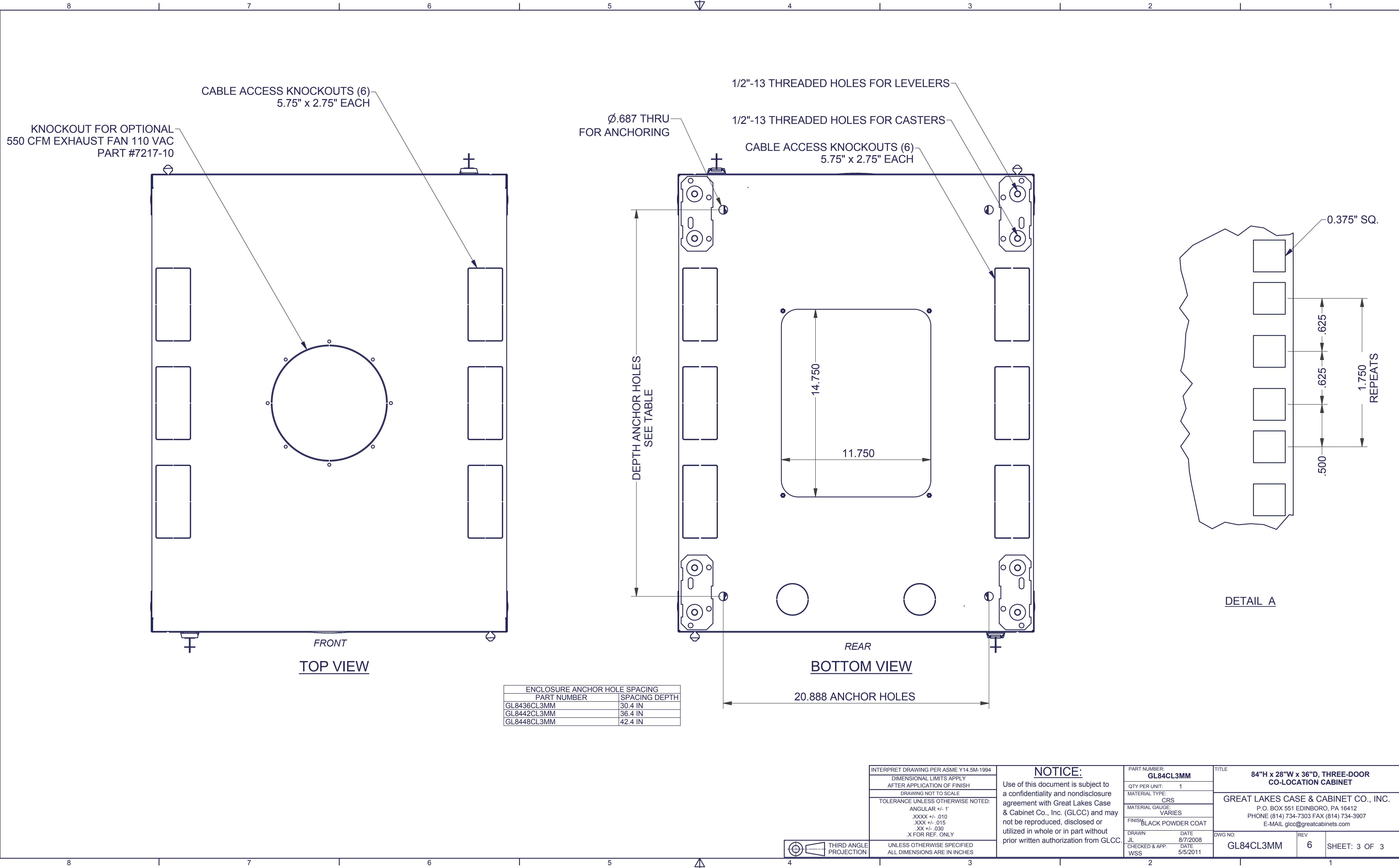
PART NUMBER: GL84CL3MM	TITLE 84"H x 28"W x 36"D, THREE-DOOR CO-LOCATION CABINET
QTY PER UNIT: 1	GREAT LAKES CASE & CABINET CO., INC. P.O. BOX 551 EDINBORO, PA 16412 PHONE (814) 734-7303 FAX (814) 734-3907 E-MAIL glcc@greatcabinets.com
MATERIAL TYPE: CRS	
MATERIAL GAUGE: VARIES	
FINISH: BLACK POWDER COAT	
DRAWN JL	DATE 8/7/2008
CHECKED & APP. WSS	DATE 5/5/2011

DWG NO: GL84CL3MM	REV 6	SHEET: 2 OF 3
-----------------------------	-----------------	---------------



THIRD ANGLE
PROJECTION
UNLESS OTHERWISE SPECIFIED
ALL DIMENSIONS ARE IN INCHES

8 7 6 5 4 3 2 1



ENCLOSURE ANCHOR HOLE SPACING	
PART NUMBER	SPACING DEPTH
GL8436CL3MM	30.4 IN
GL8442CL3MM	36.4 IN
GL8448CL3MM	42.4 IN

INTERPRET DRAWING PER ASME Y14.5M-1994
 DIMENSIONAL LIMITS APPLY AFTER APPLICATION OF FINISH
 DRAWING NOT TO SCALE
 TOLERANCE UNLESS OTHERWISE NOTED:
 ANGULAR +/- .1°
 .XXXX +/- .010
 .XXX +/- .015
 .XX +/- .030
 .X FOR REF. ONLY

NOTICE:
 Use of this document is subject to a confidentiality and nondisclosure agreement with Great Lakes Case & Cabinet Co., Inc. (GLCC) and may not be reproduced, disclosed or utilized in whole or in part without prior written authorization from GLCC.

PART NUMBER: **GL84CL3MM**
 QTY PER UNIT: 1
 MATERIAL TYPE: CRS
 MATERIAL GAUGE: VARIES
 FINISH: BLACK POWDER COAT
 DRAWN: JL
 CHECKED & APP. WSS
 DATE: 8/7/2008
 DATE: 5/5/2011

TITLE: **84"H x 28"W x 36"D, THREE-DOOR CO-LOCATION CABINET**
 GREAT LAKES CASE & CABINET CO., INC.
 P.O. BOX 551 EDINBORO, PA 16412
 PHONE (814) 734-7303 FAX (814) 734-3907
 E-MAIL glcc@greatcabinets.com
 DWG NO: **GL84CL3MM**
 REV: **6**
 SHEET: 3 OF 3



UNLESS OTHERWISE SPECIFIED ALL DIMENSIONS ARE IN INCHES