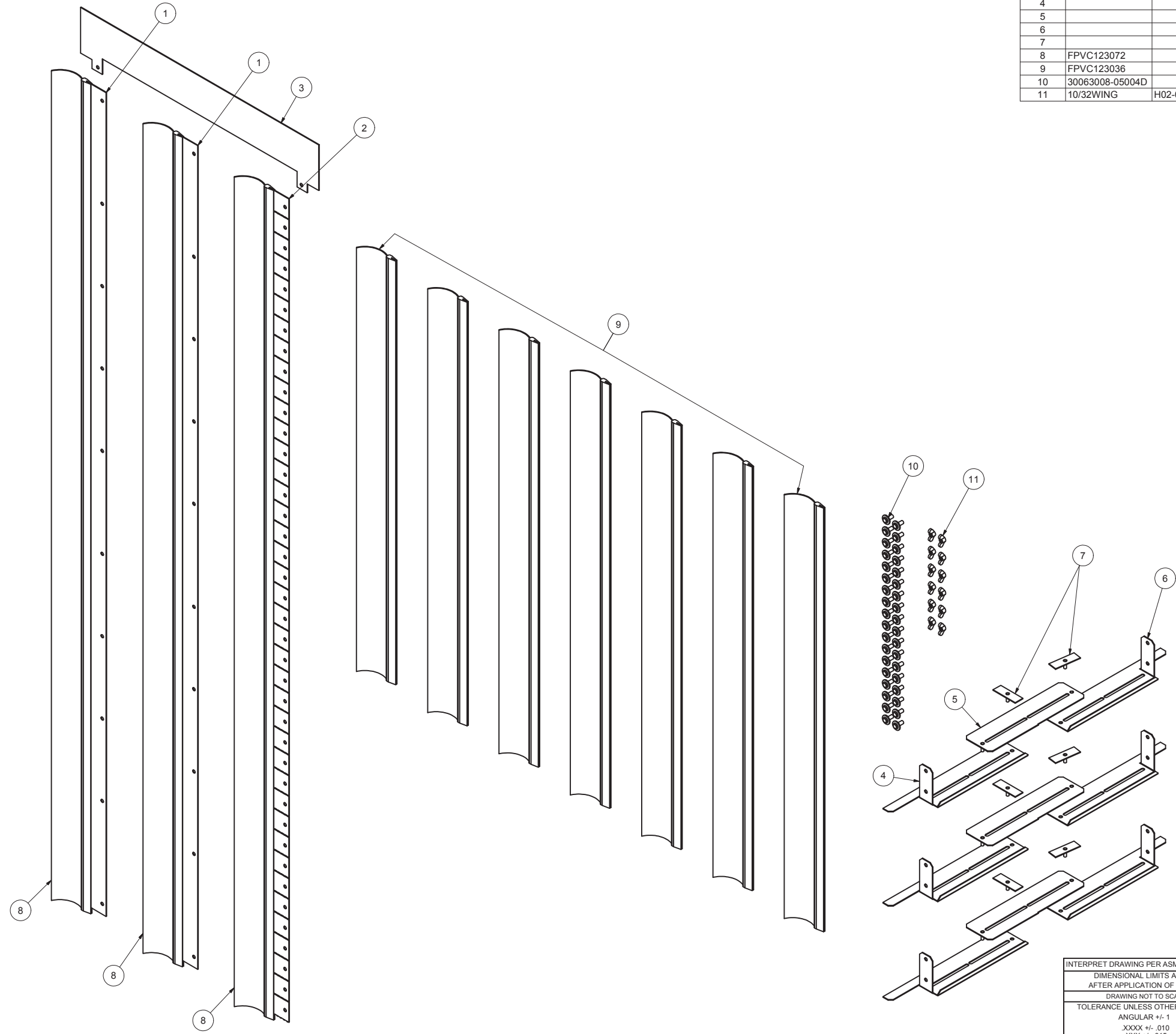


REVISION HISTORY			
REV	DESCRIPTION	DATE	APPROVED
0	ECO-02173	2/14/2008	JL
1	ECO-02250	4/21/2008	JL
2	ECO-02595	7/6/2009	FED

Bill of Material						
ITEM	PART NUMBER	STOCK NUMBER	QTY	DESCRIPTION	FILE NAME	REVISION
1			2	VERTICAL AIR-DAM	I006525.ipt	0
2			1	ADJUSTABLE VERTICAL AIR-DAM	I006526.ipt	0
3			1	TOP BRUSH STRIP BRACKET	I006527.ipt	0
4			3	SIDE AIR FLOW PLENUM BRUSH BRACKET - LEFT	I008538.ipt	0
5			3	SIDE AIR FLOW PLENUM BRUSH BRACKET - MIDDLE	I008540.iam	0
6			3	SIDE AIR FLOW PLENUM BRUSH BRACKET - RIGHT	I008539.ipt	0
7			6	SIDE AIR FLOW PLENUM REVERSIBLE PEM STUD	I008541.iam	0
8	FPVC123072		3	FLEXIBLE PVC TRIM, 3" WIDE, 72" LONG - TANIS MFG.	FPVC123072.ipt	-
9	FPVC123036		7	FLEXIBLE PVC TRIM, 3" WIDE, 36" LONG - TANIS MFG.	FPVC123036.ipt	-
10	30063008-05004D		36	PANEL FASTENER, TUFLOK, ITW-FASTEX. OR EQUIV.	30063008-05004D.ipt	-
11	10/32WING	H02-004	12	#10-32 WING NUT 2ZN36616	10-32WING.ipt	-



INTERPRET DRAWING PER ASME Y14.5M-1994
 DIMENSIONAL LIMITS APPLY
 AFTER APPLICATION OF FINISH
 DRAWING NOT TO SCALE
 TOLERANCE UNLESS OTHERWISE NOTED:
 ANGULAR +/- .1
 .XXXX +/- .010
 .XXX +/- .015
 .XX +/- .030
 .X FOR REF. ONLY

NOTICE:
 Use of this document is subject to a confidentiality and nondisclosure agreement with Great Lakes Case & Cabinet Co., Inc. (GLCC) and may not be reproduced, disclosed or utilized in whole or in part without prior written authorization from GLCC.

PART NUMBER:
SAFPL
 QTY PER UNIT: 1
 MATERIAL TYPE:
CRS & brush grommet
 MATERIAL GAUGE:
#16 GA
 FINISH: -

TITLE
SIDE AIRFLOW PLENUM KIT - TOP LEVEL KIT
 GREAT LAKES CASE & CABINET CO., INC.
 P.O. BOX 551 EDINBORO, PA 16412
 PHONE (814) 734-7303 FAX (814) 734-3907
 E-MAIL glcc@greatcabinets.com

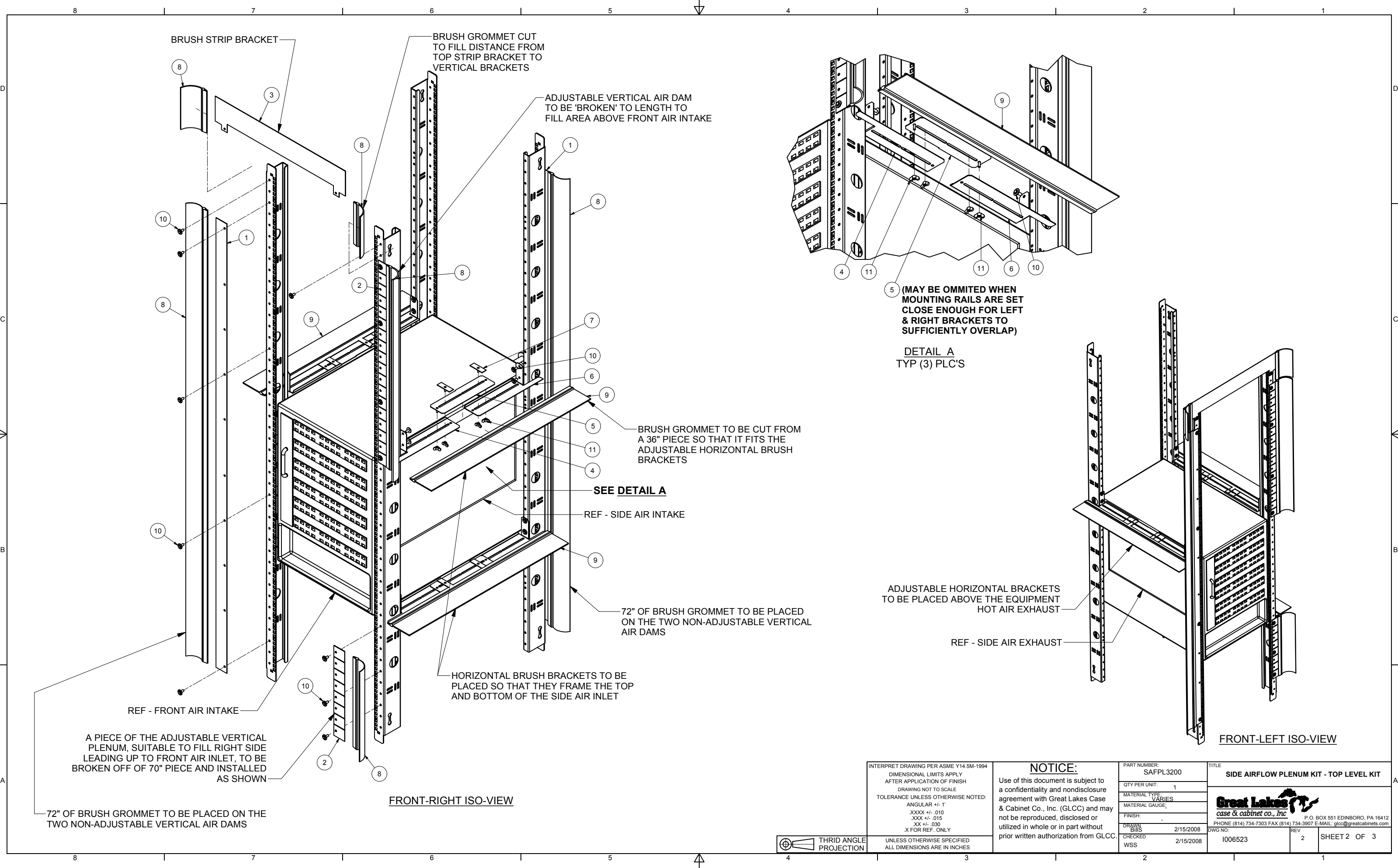


THIRD ANGLE PROJECTION
 UNLESS OTHERWISE SPECIFIED
 ALL DIMENSIONS ARE IN INCHES

DRAWN
 FED
 CHECKED & APP.
 WSS

DATE
 7/7/2009
 DATE
 7/7/2009

DWG NO:
I006523
 REV
2
 SHEET: 1 OF 3



INTERPRET DRAWING PER ASME Y14.5M-1994
 DIMENSIONAL LIMITS APPLY AFTER APPLICATION OF FINISH
 DRAWING NOT TO SCALE
 TOLERANCE UNLESS OTHERWISE NOTED:
 ANGULAR +/- .1°
 .XXXX +/- .010
 .XXX +/- .015
 .XX +/- .030
 X FOR REF. ONLY

NOTICE:
 Use of this document is subject to a confidentiality and nondisclosure agreement with Great Lakes Case & Cabinet Co., Inc. (GLCC) and may not be reproduced, disclosed or utilized in whole or in part without prior written authorization from GLCC.

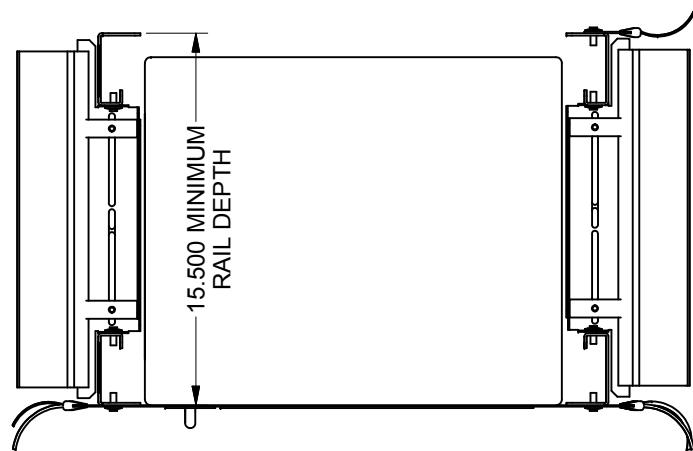
PART NUMBER:
SAFPL3200
 QTY PER UNIT: 1
 MATERIAL TYPE: VARIES
 MATERIAL GAUGE:
 FINISH:
 DRAWN: 2/15/2008
 CHECKED: WSS
 DATE: 2/15/2008

TITLE:
SIDE AIRFLOW PLENUM KIT - TOP LEVEL KIT

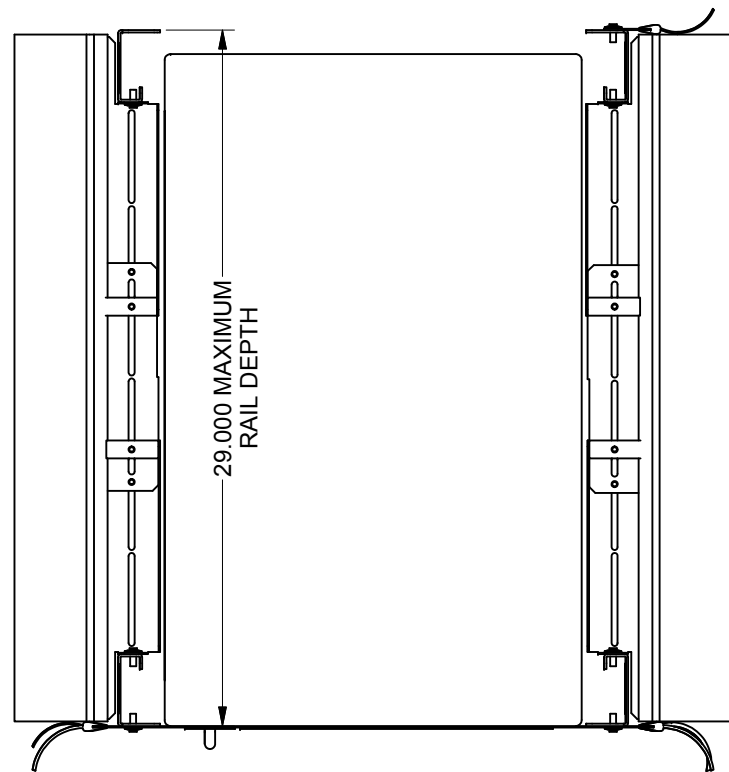
Great Lakes
case & cabinet co., inc
 P.O. BOX 551 EDINBORO, PA 16412
 PHONE (814) 734-7303 FAX (814) 734-3907 E-MAIL: glcc@greatcabinets.com

DWG NO: 1006523
 REV: 2
 SHEET 2 OF 3

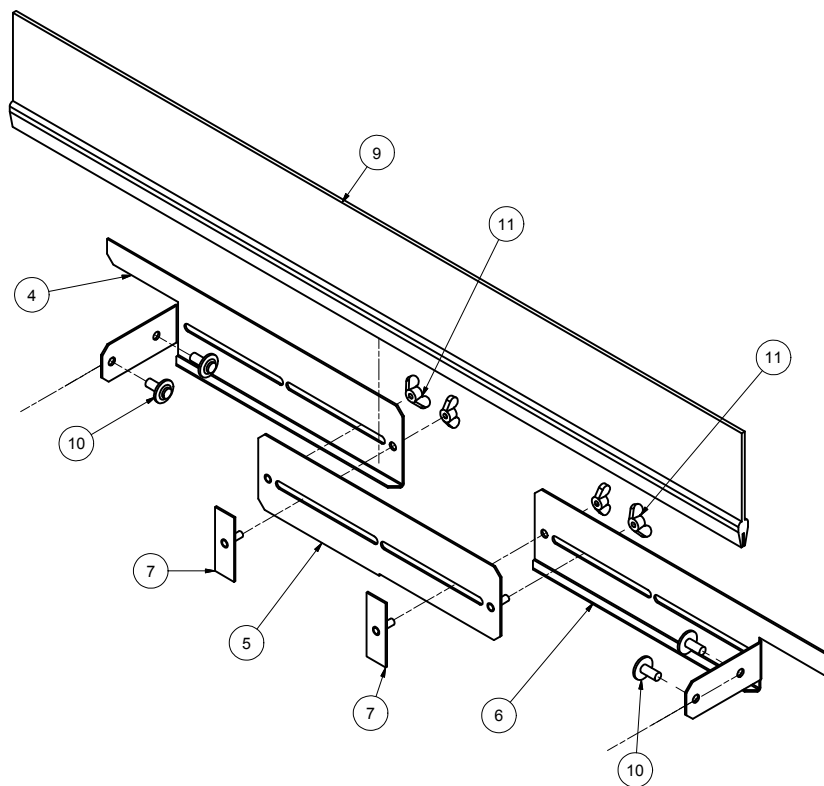




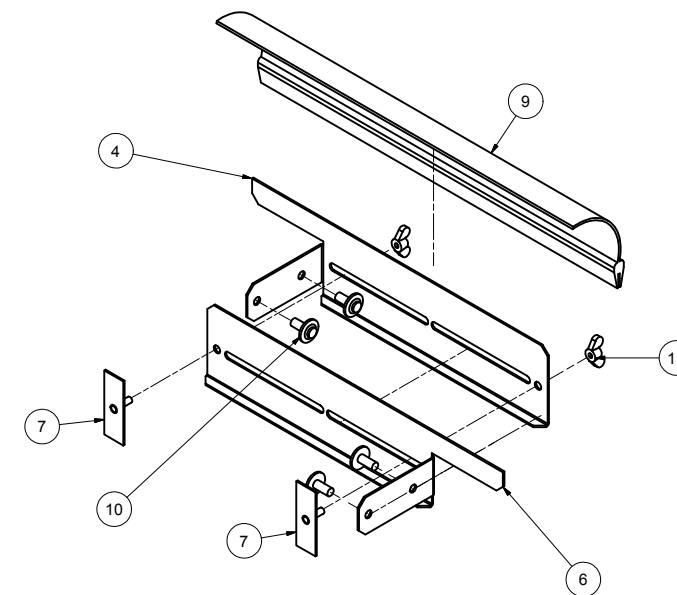
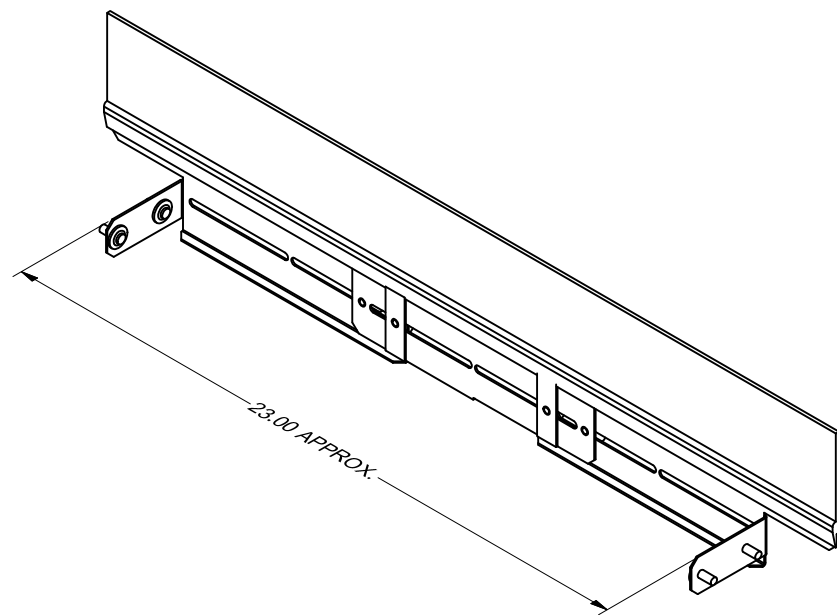
TOP VIEW
MIN RAIL DEPTH SHOWN



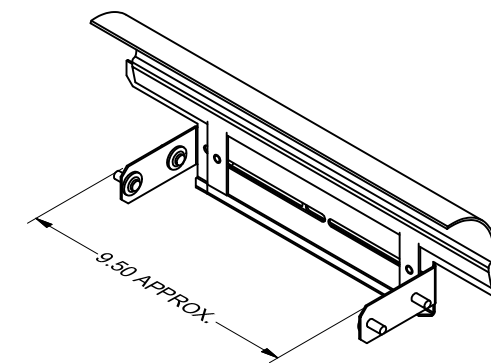
TOP VIEW
MAX RAIL DEPTH SHOWN



HORIZONTAL AIR DAM ASSEMBLY FOR LARGE MTG RAIL SPACINGS



HORIZONTAL AIR DAM ASSEMBLY FOR SMALL MTG RAIL SPACINGS



INTERPRET DRAWING PER ASME Y14.5M-1994
DIMENSIONAL LIMITS APPLY
AFTER APPLICATION OF FINISH
DRAWING NOT TO SCALE
TOLERANCE UNLESS OTHERWISE NOTED:
ANGULAR +/- 1°
.XXXX +/- .010
.XXX +/- .015
.XX +/- .030
.X FOR REF. ONLY

NOTICE:

Use of this document is subject to a confidentiality and nondisclosure agreement with Great Lakes Case & Cabinet Co., Inc. (GLCC) and may not be reproduced, disclosed or utilized in whole or in part without prior written authorization from GLCC.

PART NUMBER:
SAFPL3200
QTY PER UNIT: 1
MATERIAL TYPE: VARIES
MATERIAL GAUGE:
FINISH:
DRAWN: 7/7/2009
CHECKED: 7/7/2009
WSS

TITLE
SIDE AIRFLOW PLENUM KIT - TOP LEVEL KIT



PHONE (814) 734-7303 FAX (814) 734-3907 E-MAIL: glcc@greatcabinets.com

P.O. BOX 551 EDINBORO, PA 16412



THIRD ANGLE
PROJECTION
UNLESS OTHERWISE SPECIFIED
ALL DIMENSIONS ARE IN INCHES

REV 2
SHEET 3 OF 3

