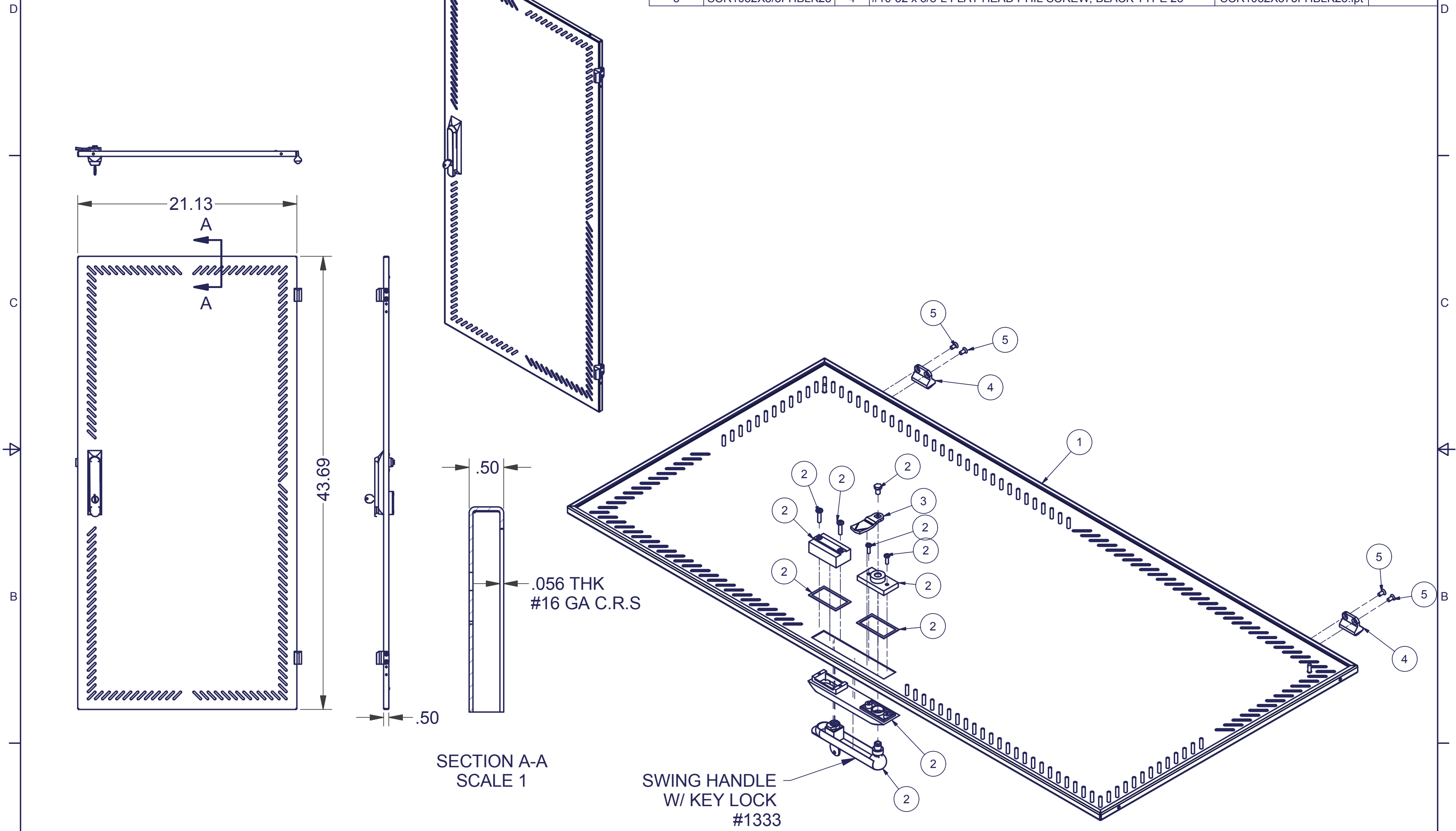


REVISION HISTORY			
REV	DESCRIPTION	DATE	APPROVED
1	ECO-01275	7/23/2003	WSS

Bill of Material					
ITEM	PART NUMBER	QTY	DESCRIPTION	FILE NAME	REVISION
1	-	1	PERIMETER VENTED DOOR FOR 48H x 24W ENHANCED	I001415.iam	1
2	XHGLCC	1	GLCC SWING HANDLE	XHGLCC NO CAM.iam	-
3	AA57711001	1	SINGLE POINT CAM FOR XHGLCC	AA5771100.ipt	-
4	HINGEF	2	HINGE - FEMALE	I000535.ipt	0
5	SCR1032X3/8FHBLK23	4	#10-32 x 3/8"L FLAT HEAD PHIL SCREW, BLACK TYPE 23	SCR1032X375FHBLK23.ipt	



SECTION A-A  
SCALE 1

SWING HANDLE  
W/ KEY LOCK  
#1333

INTERPRET DRAWING PER ASME Y14.5M-1994
DIMENSIONAL LIMITS APPLY AFTER APPLICATION OF FINISH
DRAWING NOT TO SCALE
TOLERANCE UNLESS OTHERWISE NOTED:
ANGULAR +/- 1'
.XXXX +/- .010
.XXX +/- .015
.XX +/- .030
.X FOR REF. ONLY
UNLESS OTHERWISE SPECIFIED ALL DIMENSIONS ARE IN INCHES

**NOTICE:**  
Use of this document is subject to a confidentiality and nondisclosure agreement with Great Lakes Case & Cabinet Co., Inc. (GLCC) and may not be reproduced, disclosed or utilized in whole or in part without prior written authorization from GLCC.

PART NUMBER: <b>4804E24X100</b>	
QTY PER UNIT: 1	
MATERIAL TYPE: N/A	
MATERIAL GAUGE: N/A	
FINISH: N/A	
DRAWN: WSS	DATE: 6/12/2003
CHECKED & APP. C.A.	DATE: 6/12/03

TITLE <b>PERIMETER VENTED DOOR FOR 48H x 24W ENHANCED, VENDOR ASSEMBLY</b>	
GREAT LAKES CASE & CABINET CO., INC. P.O. BOX 551 EDINBORO, PA 16412 PHONE (814) 734-7303 FAX (814) 734-3907 E-MAIL glcc@greatcabinets.com	
DWG NO: <b>I001414</b>	REV <b>1</b>
SHEET: 1 OF 1	

