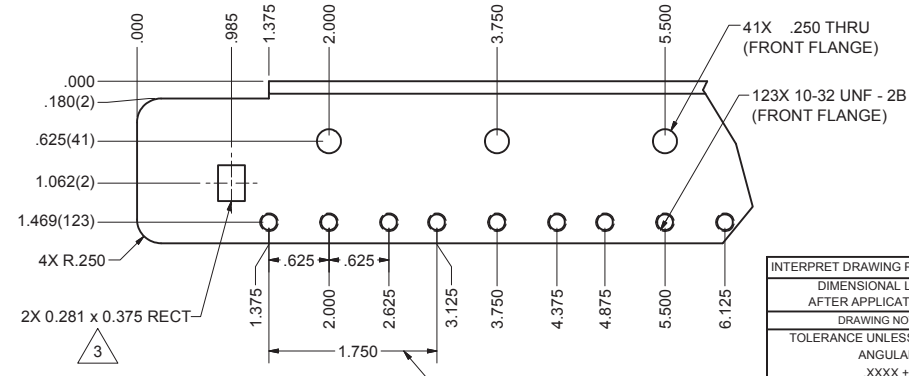
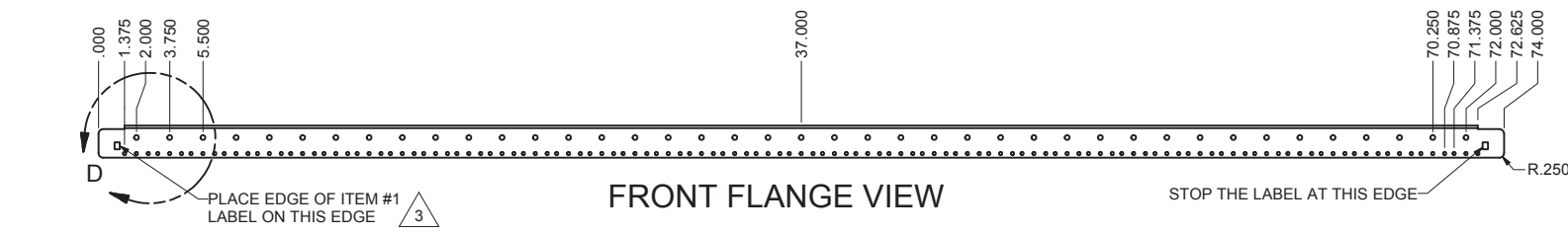
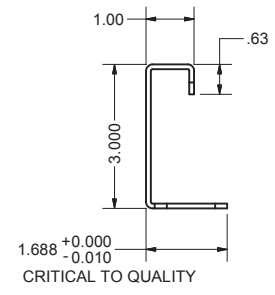
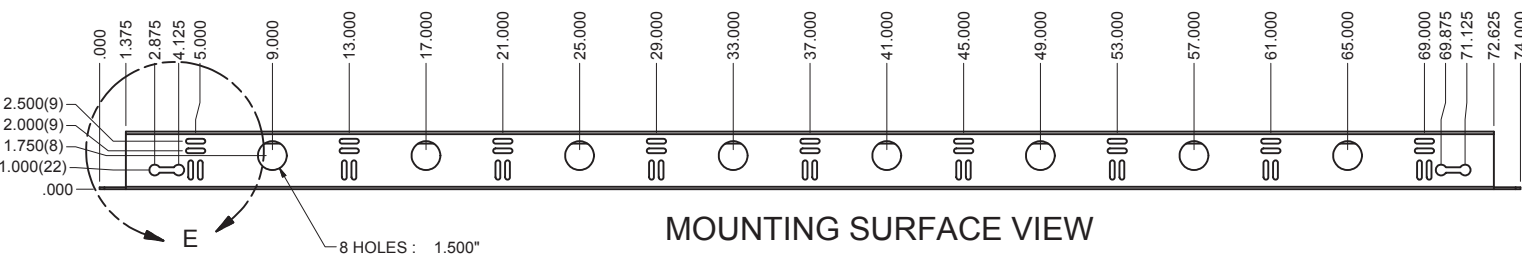
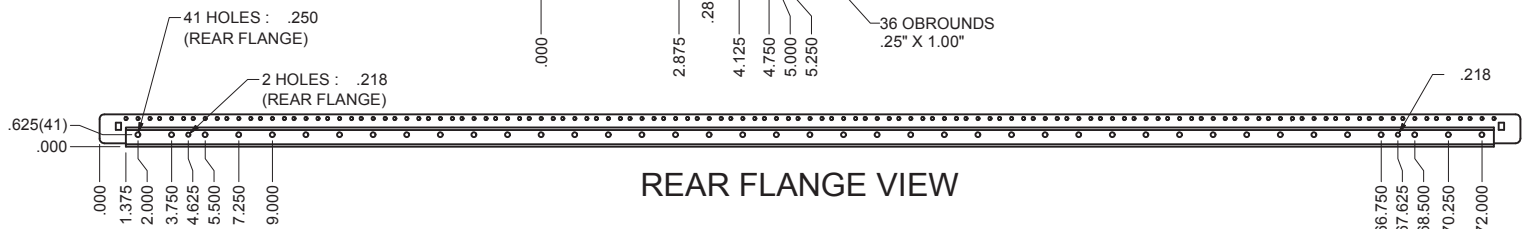
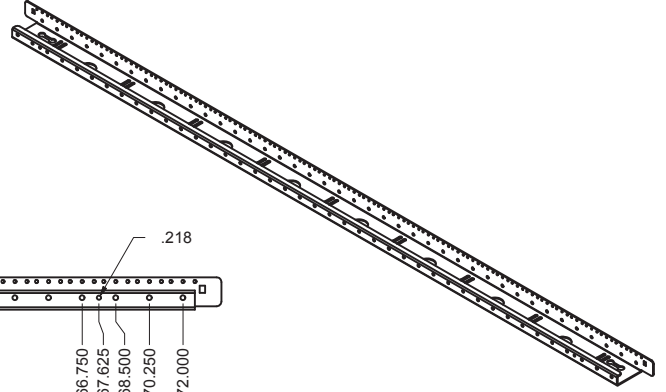
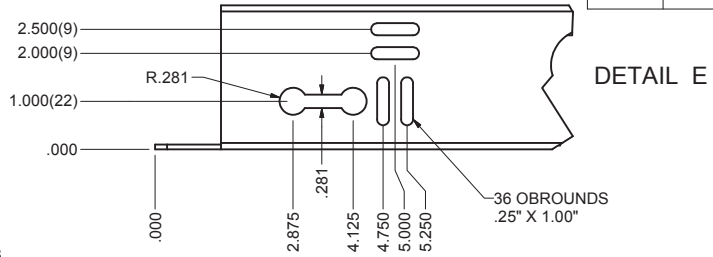


REVISION HISTORY			
REV	DESCRIPTION	DATE	APPROVED
2	ECO-01271	7/21/2003	WSS
3	ECO-01558	4/8/2005	JL

Bill of Material					
ITEM	PART NUMBER	QTY	DESCRIPTION	FILE NAME	REV
1	EPM-1870	1	77"x.312"x.007" POLYCARBONATE RU MARKER, 1-45, WHITE ON BLACK, 9471 ADHESIVE, 3 STRIPS/SET	-	-



INTERPRET DRAWING PER ASME Y14.5M-1994
 DIMENSIONAL LIMITS APPLY AFTER APPLICATION OF FINISH
 DRAWING NOT TO SCALE
 TOLERANCE UNLESS OTHERWISE NOTED:
 ANGULAR +/- 1
 .XXX +/- .010
 .XXX +/- .015
 .XX +/- .030
 X FOR REF. ONLY
 UNLESS OTHERWISE SPECIFIED ALL DIMENSIONS ARE IN INCHES

NOTICE:
 Use of this document is subject to a confidentiality and nondisclosure agreement with Great Lakes Case & Cabinet Co., Inc. (GLCC) and may not be reproduced, disclosed or utilized in whole or in part without prior written authorization from GLCC.

PART NUMBER: 7805ES1X100	
QTY PER UNIT:	1
MATERIAL TYPE:	CRS
MATERIAL GAUGE:	12 GA
FINISH:	SEE NOTES
DRAWN:	WSS
CHECKED:	WSS
DATE:	8-14-02
DATE:	7/17/03

TITLE ENHANCED RAIL, FOR 78" HIGH ENCLOSURE, #10-32 TAPPED MOUNTING HOLES		
GREAT LAKES CASE & CABINET CO., INC. P.O. BOX 551 EDINBORO, PA 16412 PHONE (814) 734-7303 FAX (814) 734-3907 E-MAIL glcc@greatcabinets.com		
DWG NO: I000595	REV 3	SHEET 1 OF 1