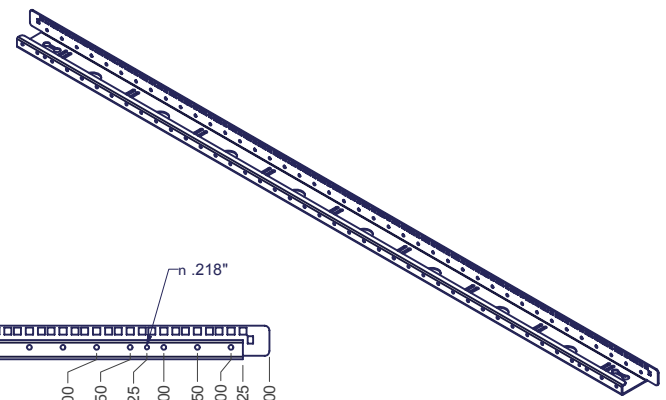
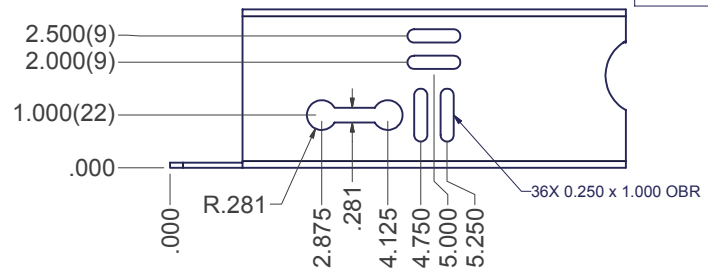


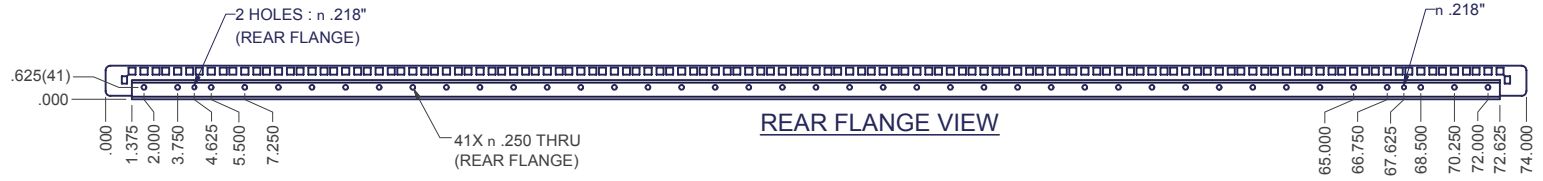
REVISION HISTORY			
REV	DESCRIPTION	DATE	APPROVED
2	ECO-01271	9/12/2003	WSS
3	ECO-01558	4/8/2005	JL

Bill of Material				FILE NAME	REV
ITEM	PART NUMBER	QTY	DESCRIPTION		
1	EPM-1870	1	77"x.312"x.007" POLYCARBONATE RU MARKER, 1-45, WHITE ON BLACK, 9471 ADHESIVE, 3 STRIPS/SET	-	-

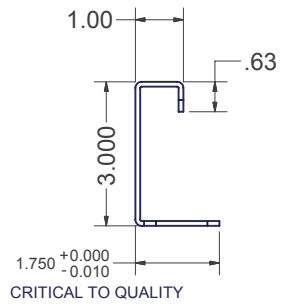
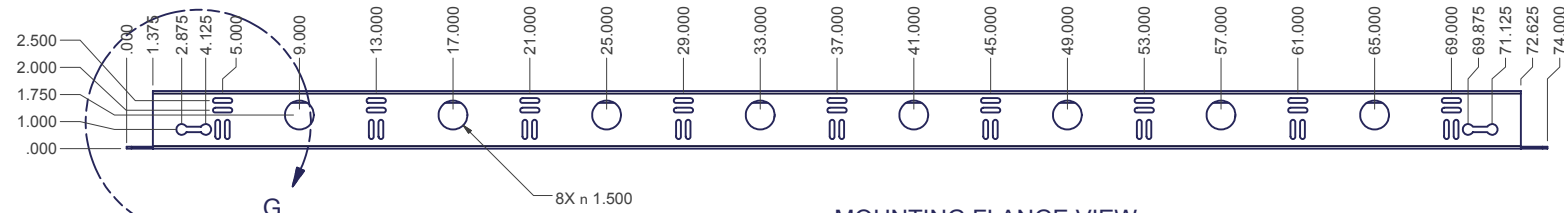
DETAIL G



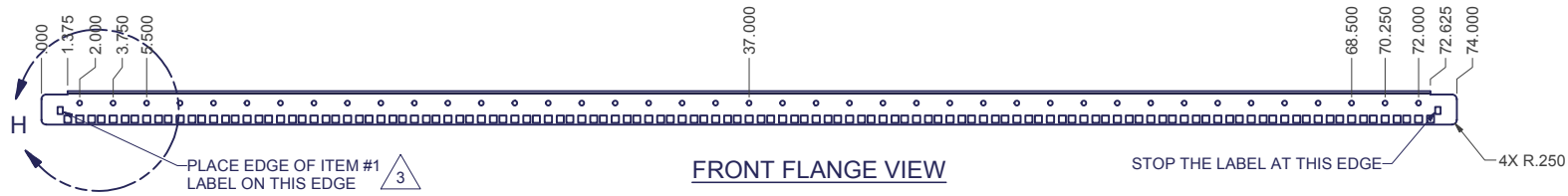
REAR FLANGE VIEW



MOUNTING FLANGE VIEW



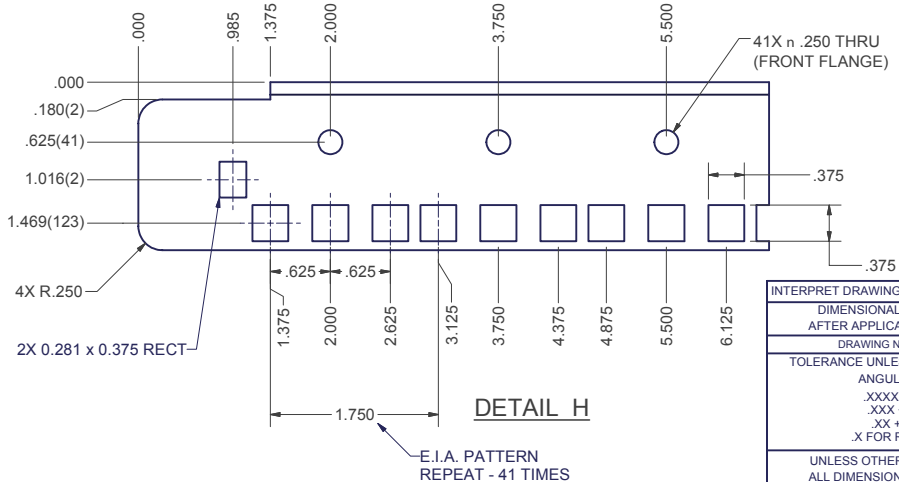
FRONT FLANGE VIEW



SPECIAL NOTES:

- 1) REFER TO PURCHASE ORDER - SPECIAL INSTRUCTIONS MAY APPLY.
- 2) NUMBERED LABELS TO BE PLACED ON FRONT FACE OF RAIL. RAILS TO BE LABELED IN PAIRS. ONE RAIL SHOULD HAVE THE NUMBER 1 AT THE BOTTOM OF THE RAIL AND THE OPPOSITE RAIL SHOULD HAVE NUMBER 1 AT THE BOTTOM OF THE OPPOSITE END. THE END OF THE LABEL WITH THE NUMBER 1 SHOULD START AT THE EDGE OF ONE OF THE 0.281 x 0.375 RECTANGLES AND TRAVEL TO THE EDGE OF THE OTHER 0.281 x 0.375 RECTANGLE. TRIM THE LABEL TO LENGTH AS NEEDED.
- 3) FINISH PER TD-09-103 (POWDER COAT) CLASS B, TEXTURE LEVEL 3 - ALL SURFACES UNLESS OTHERWISE NOTED.
- 4) DIMENSIONS SHOWN ARE PRIOR TO APPLICATION OF FINISH.

DETAIL H



INTERPRET DRAWING PER ASME Y14.5M-1994
DIMENSIONAL LIMITS APPLY AFTER APPLICATION OF FINISH
DRAWING NOT TO SCALE
TOLERANCE UNLESS OTHERWISE NOTED:
ANGULAR +/- 1-
.XXXX +/- .010
.XXX +/- .015
.XX +/- .030
.X FOR REF. ONLY
UNLESS OTHERWISE SPECIFIED ALL DIMENSIONS ARE IN INCHES

NOTICE:
Use of this document is subject to a confidentiality and nondisclosure agreement with Great Lakes Case & Cabinet Co., Inc. (GLCC) and may not be reproduced, disclosed or utilized in whole or in part without prior written authorization from GLCC.

PART NUMBER:	7805ES2
QTY PER UNIT:	1
MATERIAL TYPE:	MILD STEEL
MATERIAL GAUGE:	12 GA
FINISH:	SEE NOTES
DRAWN:	WSS
CHECKED:	8-19-02

TITLE	ENHANCED RAIL, FOR 78" HIGH ENCLOSURE, 3/8" SQUARE MOUNTING HOLES		
	GREAT LAKES CASE & CABINET CO., INC. P.O. BOX 551 EDINBORO, PA 16412 PHONE (814) 734-7303 FAX (814) 734-3907 E-MAIL glcc@greatcabinets.com		
DWG NO:	I000603	REV	3
			SHEET 1 OF 1