

REVISION HISTORY			
REV	DESCRIPTION	DATE	APPROVED
0	ECO-02039	9/24/2007	WSS

Bill of Material					
ITEM	PART NUMBER	QTY	DESCRIPTION	FILE NAME	REVISION
1	0042ES233100	4	HORIZONTAL FOR 23"EIA MOUNTING IN 30"W x 42"D & 48"D ES	I005980.ipt	0
2	H01-078	16	SCREW, 10-32x1/2" PH PAN TYPE 23 BLACK OXIDE/WAX RoHS	SCR1032X500BLK.ipt	-
3	H02-001	16	#10-32 KEPS NUT, ZINC RoHS	10-32NUT.iam	-

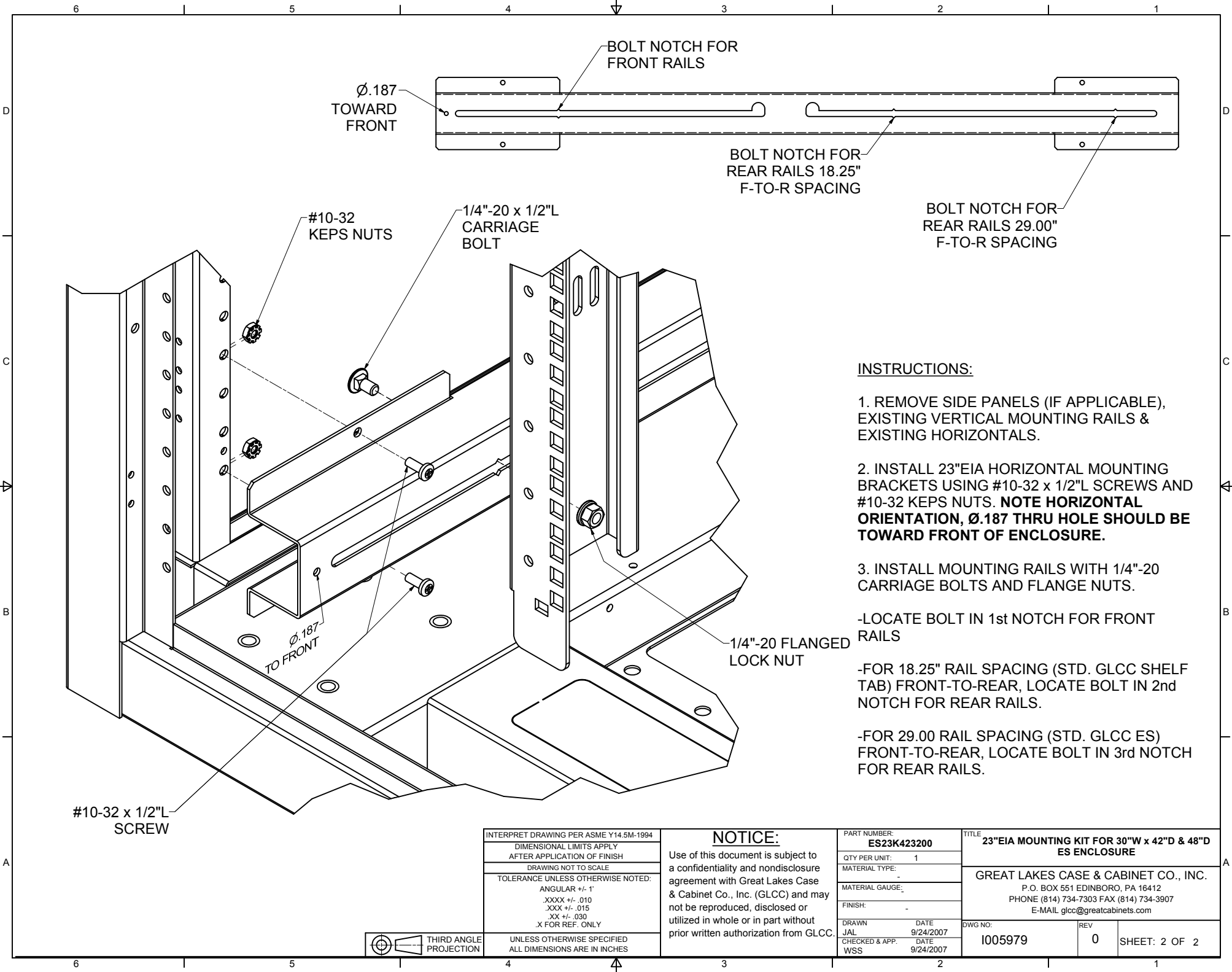
INTERPRET DRAWING PER ASME Y14.5M-1994
 DIMENSIONAL LIMITS APPLY
 AFTER APPLICATION OF FINISH
 DRAWING NOT TO SCALE
 TOLERANCE UNLESS OTHERWISE NOTED:
 ANGULAR +/- 1'
 .XXXX +/- .010
 .XXX +/- .015
 .XX +/- .030
 .X FOR REF. ONLY
 UNLESS OTHERWISE SPECIFIED
 ALL DIMENSIONS ARE IN INCHES

NOTICE:
 Use of this document is subject to a confidentiality and nondisclosure agreement with Great Lakes Case & Cabinet Co., Inc. (GLCC) and may not be reproduced, disclosed or utilized in whole or in part without prior written authorization from GLCC.

PART NUMBER:
ES23K423200
 QTY PER UNIT: 1
 MATERIAL TYPE: -
 MATERIAL GAUGE: -
 FINISH: -
 DRAWN: JAL DATE: 9/24/2007
 CHECKED & APP. DATE: WSS 9/24/2007

TITLE
23"EIA MOUNTING KIT FOR 30"W x 42"D & 48"D ES ENCLOSURE
 GREAT LAKES CASE & CABINET CO., INC.
 P.O. BOX 551 EDINBORO, PA 16412
 PHONE (814) 734-7303 FAX (814) 734-3907
 E-MAIL glcc@greatcabinets.com
 DWG NO: **I005979** REV: **0** SHEET: 1 OF 2





INSTRUCTIONS:

1. REMOVE SIDE PANELS (IF APPLICABLE), EXISTING VERTICAL MOUNTING RAILS & EXISTING HORIZONTALS.
2. INSTALL 23"EIA HORIZONTAL MOUNTING BRACKETS USING #10-32 x 1/2"L SCREWS AND #10-32 KEPS NUTS. **NOTE HORIZONTAL ORIENTATION, Ø.187 THRU HOLE SHOULD BE TOWARD FRONT OF ENCLOSURE.**
3. INSTALL MOUNTING RAILS WITH 1/4"-20 CARRIAGE BOLTS AND FLANGE NUTS.
 - LOCATE BOLT IN 1st NOTCH FOR FRONT RAILS
 - FOR 18.25" RAIL SPACING (STD. GLCC SHELF TAB) FRONT-TO-REAR, LOCATE BOLT IN 2nd NOTCH FOR REAR RAILS.
 - FOR 29.00 RAIL SPACING (STD. GLCC ES) FRONT-TO-REAR, LOCATE BOLT IN 3rd NOTCH FOR REAR RAILS.

INTERPRET DRAWING PER ASME Y14.5M-1994
DIMENSIONAL LIMITS APPLY AFTER APPLICATION OF FINISH
DRAWING NOT TO SCALE
TOLERANCE UNLESS OTHERWISE NOTED:
ANGULAR +/- .1°
.XXXX +/- .010
.XXX +/- .015
.XX +/- .030
.X FOR REF. ONLY

NOTICE:
 Use of this document is subject to a confidentiality and nondisclosure agreement with Great Lakes Case & Cabinet Co., Inc. (GLCC) and may not be reproduced, disclosed or utilized in whole or in part without prior written authorization from GLCC.

PART NUMBER:	ES23K423200
QTY PER UNIT:	1
MATERIAL TYPE:	-
MATERIAL GAUGE:	-
FINISH:	-
DRAWN	DATE
JAL	9/24/2007
CHECKED & APP.	DATE
WSS	9/24/2007

TITLE	23"EIA MOUNTING KIT FOR 30"W x 42"D & 48"D ES ENCLOSURE		
GREAT LAKES CASE & CABINET CO., INC.			
P.O. BOX 551 EDINBORO, PA 16412			
PHONE (814) 734-7303 FAX (814) 734-3907			
E-MAIL glcc@greatcabinets.com			
DWG NO:	REV	SHEET: 2 OF 2	
1005979	0		



UNLESS OTHERWISE SPECIFIED ALL DIMENSIONS ARE IN INCHES