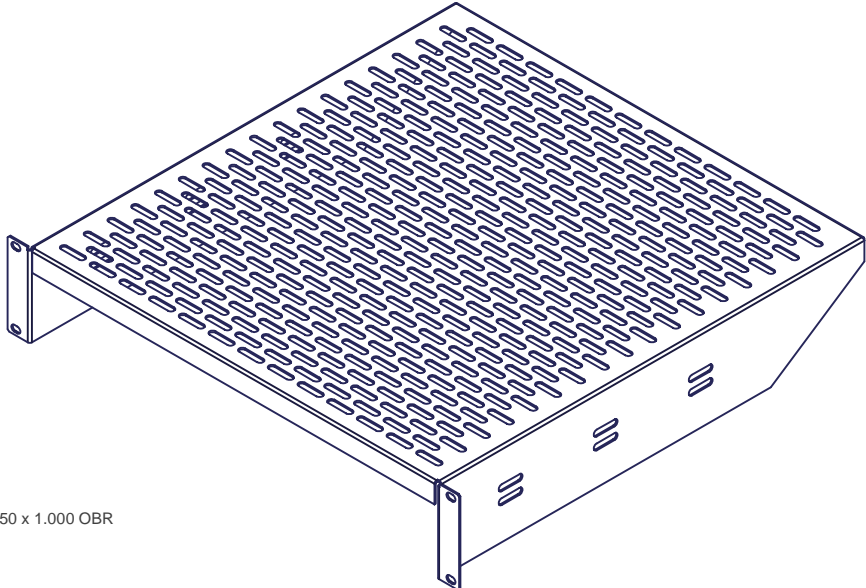
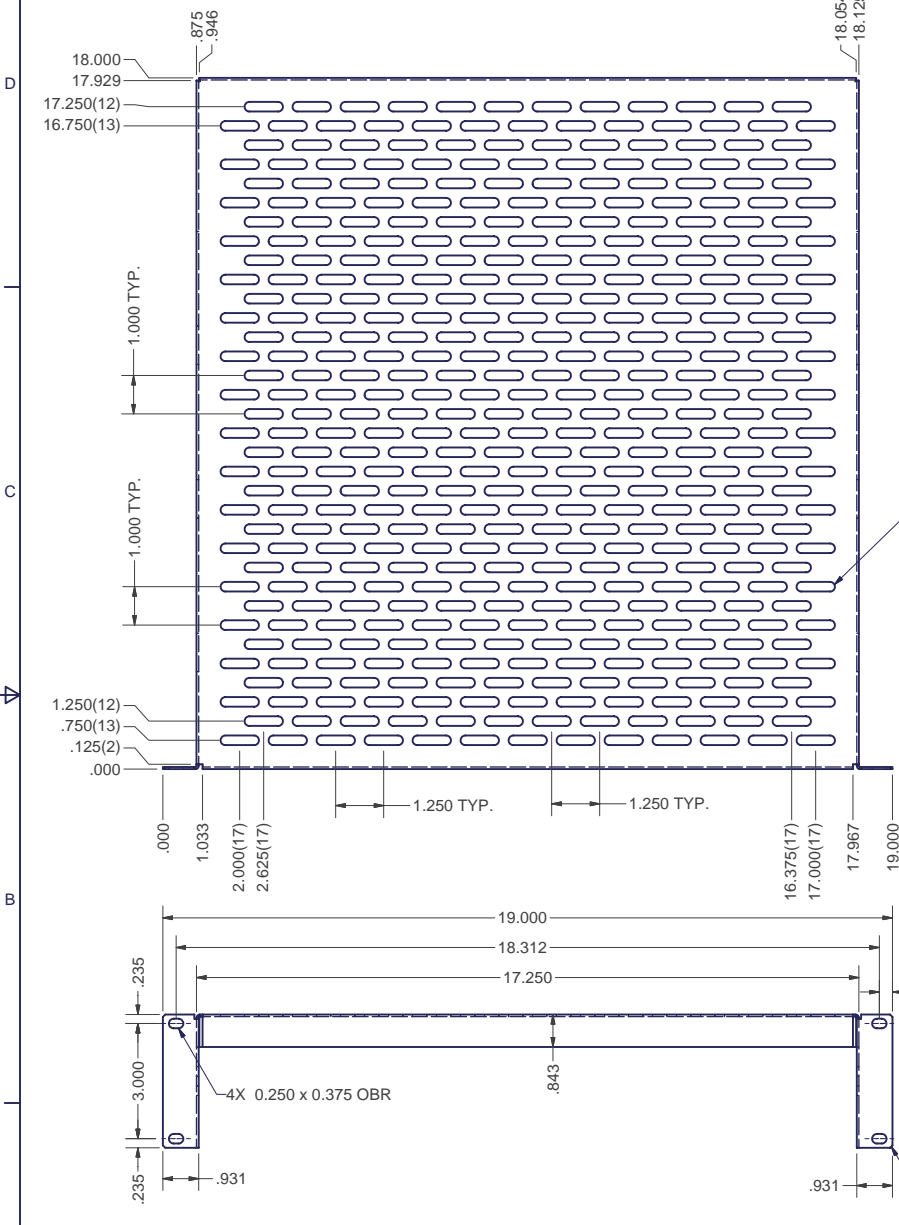
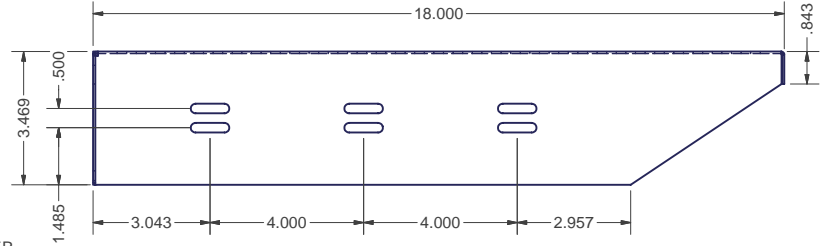
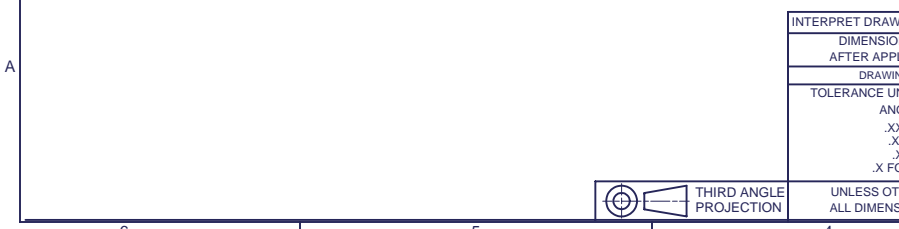


REVISION HISTORY			
REV	DESCRIPTION	DATE	APPROVED
7	ECO-01884	3/6/2007	WSS

7 NEW SHELF DESIGN - CHANGE TO TRUE 2U



- A) SHELF DIMENSIONS: 3.47"H x 17.25"W x 18.0"D
- B) RACK MOUNTING: 19" EIA
- C) WEIGHT CAPACITY: 60 LBS
- D) STANDARD TAB PLACEMENT: N/A
- E) MAXIMUM TAB PLACEMENT: N/A
- F) GAUGE: 16 GA CRS / POWDER COAT, BLACK TEXTURE



INTERPRET DRAWING PER ASME Y14.5M-1994  
 DIMENSIONAL LIMITS APPLY AFTER APPLICATION OF FINISH  
 DRAWING NOT TO SCALE  
 TOLERANCE UNLESS OTHERWISE NOTED:  
 ANGULAR +/- 1'  
 .XXXX +/- .010  
 .XXX +/- .015  
 .XX +/- .030  
 .X FOR REF. ONLY  
 UNLESS OTHERWISE SPECIFIED ALL DIMENSIONS ARE IN INCHES

**NOTICE:**  
 Use of this document is subject to a confidentiality and nondisclosure agreement with Great Lakes Case & Cabinet Co., Inc. (GLCC) and may not be reproduced, disclosed or utilized in whole or in part without prior written authorization from GLCC.

PART NUMBER: <b>7206FM</b>	
QTY PER UNIT:	1
MATERIAL TYPE:	CRS
MATERIAL GAUGE:	16 GA
FINISH:	SEE NOTES
DRAWN	DATE
JAL	3/6/2007
CHECKED & APP.	DATE
WSS	3/6/2007

TITLE <b>19"EIA FRONT MOUNT STATIONARY SHELF</b>	
GREAT LAKES CASE & CABINET CO., INC. P.O. BOX 551 EDINBORO, PA 16412 PHONE (814) 734-7303 FAX (814) 734-3907 E-MAIL glcc@greatcabinets.com	
DWG NO: <b>1000900</b>	REV <b>7</b>
SHEET: 1 OF 2	

