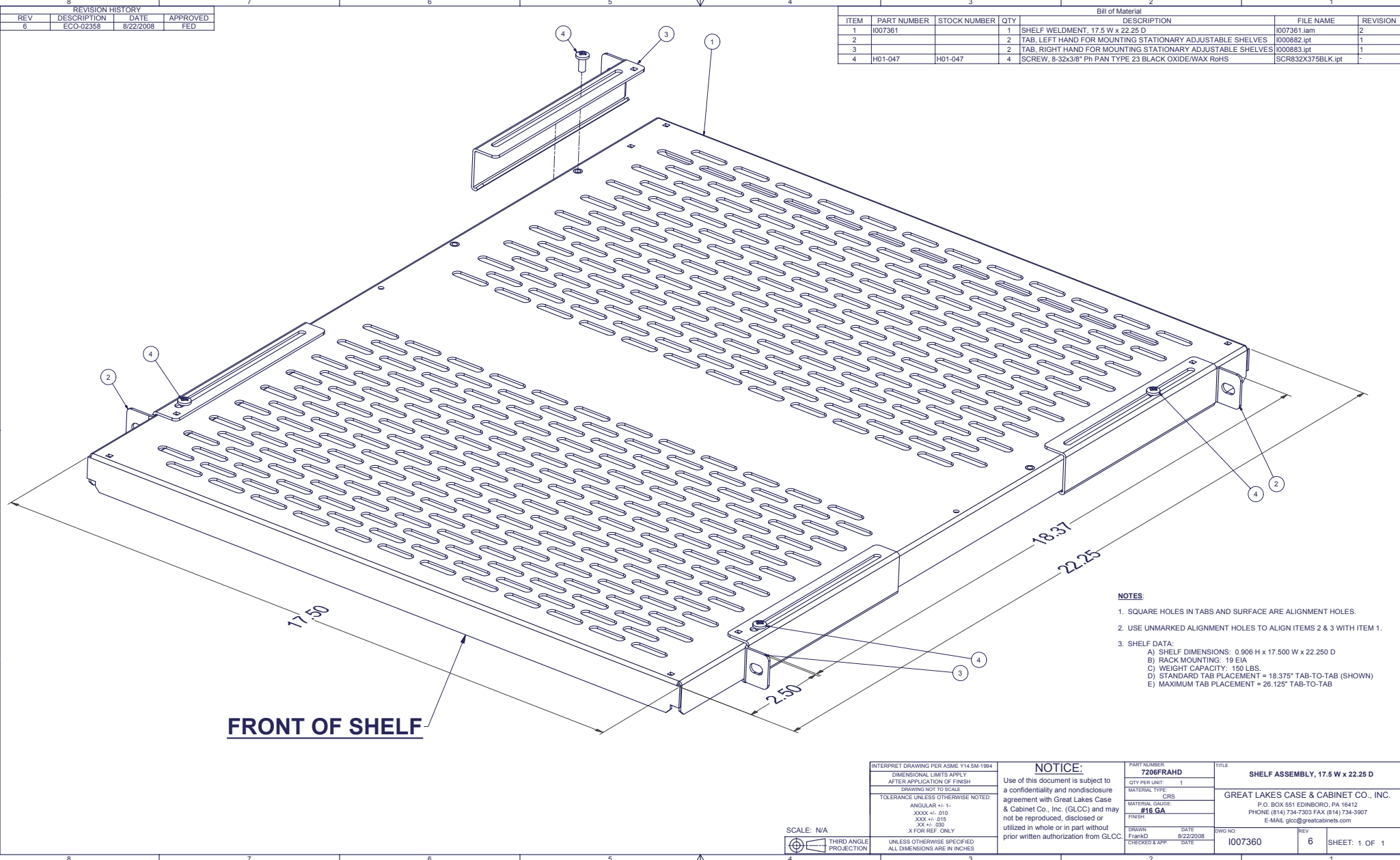


REVISION HISTORY			
REV	DESCRIPTION	DATE	APPROVED
6	ECC-02358	8/22/2008	FED

Bill of Material					FILE NAME	REVISION
ITEM	PART NUMBER	STOCK NUMBER	QTY	DESCRIPTION		
1	I007361		1	SHELF WELDMENT, 17.5 W x 22.25 D	I007361.iam	2
2			2	TAB, LEFT HAND FOR MOUNTING STATIONARY ADJUSTABLE SHELVES	I000882.ipt	1
3			2	TAB, RIGHT HAND FOR MOUNTING STATIONARY ADJUSTABLE SHELVES	I000883.ipt	1
4	H01-047	H01-047	4	SCREW, 8-32x3/8" Ph PAN TYPE 23 BLACK OXIDE/MAX R6HS	SCR832X375BLK.ipt	1



FRONT OF SHELF

- NOTES:**
- SQUARE HOLES IN TABS AND SURFACE ARE ALIGNMENT HOLES.
 - USE UNMARKED ALIGNMENT HOLES TO ALIGN ITEMS 2 & 3 WITH ITEM 1.
 - SHELF DATA:
 - A) SHELF DIMENSIONS: 0.906 H x 17.500 W x 22.250 D
 - B) RACK MOUNTINGS: 19 EIA
 - C) WEIGHT CAPACITY: 150 LBS.
 - D) STANDARD TAB PLACEMENT = 18.375" TAB-TO-TAB (SHOWN)
 - E) MAXIMUM TAB PLACEMENT = 26.125" TAB-TO-TAB

SCALE: N/A
 THIRD ANGLE PROJECTION

INTERPRET DRAWING PER ASME Y14.5M-1994	NOTICE: Use of this document is subject to a confidentiality and nondisclosure agreement with Great Lakes Case & Cabinet Co., Inc. (GLCC) and may not be reproduced, disclosed or utilized in whole or in part without prior written authorization from GLCC.	PART NUMBER: 7206FRAHD	TITLE: SHELF ASSEMBLY, 17.5 W x 22.25 D
DIMENSIONAL LIMITS APPLY AFTER APPLICATION OF FINISH DRAWING NOT TO SCALE		QTY PER UNIT: 1	GREAT LAKES CASE & CABINET CO., INC. P.O. BOX 551 EDINBORO, PA 16412 PHONE: (814) 734-7303 FAX: (814) 734-3907 E-MAIL: glcc@greatlakescabinets.com
TOLERANCE UNLESS OTHERWISE NOTED: ANGULAR +/- 1° XXX +/- .010 XXX +/- .015 XX +/- .030 X FOR REF. ONLY		MATERIAL GRADE: #16 GA.	
UNLESS OTHERWISE SPECIFIED ALL DIMENSIONS ARE IN INCHES		FINISH:	
		DRAWN: FFB/MD CHECKED & APP: DATE	DATE: 8/22/2008
		DWG NO: I007360	REV: 6
		SHEET: 1 OF 1	