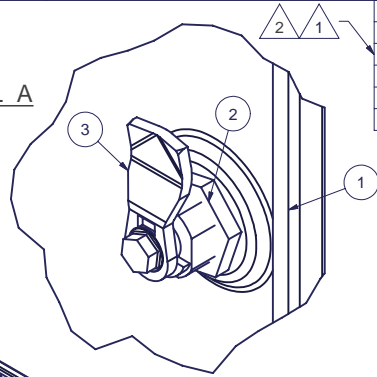


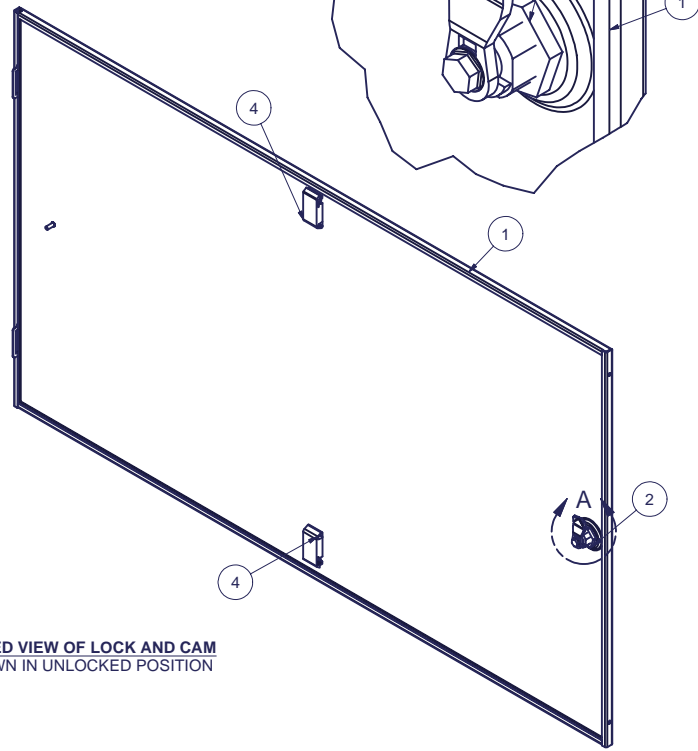
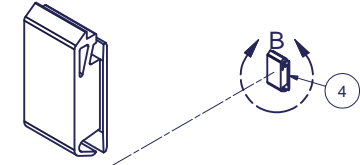
REVISION HISTORY			
REV	DESCRIPTION	DATE	APPROVED
1	ECO-01275	7/23/2003	WSS
2	ECO-01681	12/29/2005	WSS

Bill of Material					
ITEM	PART NUMBER	QTY	DESCRIPTION	FILE NAME	REVISION
1		1	SIDE PANEL, SOLID, LIFTOFF, FOR 48H x 32D E CABINET	1001409.iam	2
2	10117-32728	1	Austin Hardware 10117-32728 Black Die cast Lock	10117-32728.iam	-
3	2000614	1	CAM FOR SIDE PANELS	2000614.ipt	-
4	A34062512	2	SOUTHCO SLIDE LATCH, FLUSH	A34062512.ipt	-

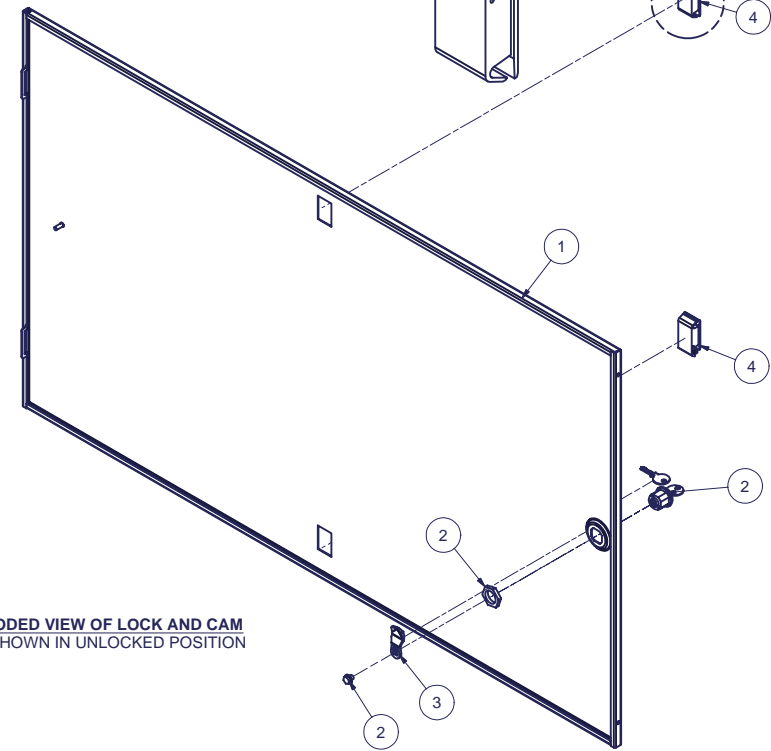
**DETAIL A**



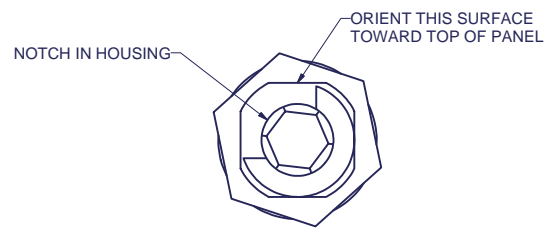
**DETAIL B**



**ASSEMBLED VIEW OF LOCK AND CAM**  
CAM SHOWN IN UNLOCKED POSITION



**EXPLODED VIEW OF LOCK AND CAM**  
CAM SHOWN IN UNLOCKED POSITION



**VIEW3**  
AS VIEWED FROM INSIDE

**LOCK AND CAM ASSEMBLY:**

- DO NOT REMOVE KEY FROM LOCK CYLINDER WHEN CYLINDER IS NOT IN THE LOCK HOUSING, LOCK MECHANISM WILL BE DESTROYED.
- POSITION LOCK HOUSING AS SHOWN IN VIEW 3 - NOTE ORIENTATION OF NOTCH ON ITS INSIDE SURFACE AND THE ORIENTATION OF THE KEY IN CYLINDER.
- SECURE LOCK HOUSING WITH NUT.
- POSITION CAM AS SHOWN AND SECURE WITH SCREW.
- TURN KEY TO VERIFY SMOOTH OPERATION OF LOCK.

**LATCH ASSEMBLY:**

- SLIP FRONT OF LATCH (OPPOSITE END WITH SPRING) THROUGH HOLE IN SIDE PANEL
- SNAP BACK END OF LATCH INTO POSITION.
- LATCH MUST TRAVEL FREELY ONCE INSTALLED - PULL LATCH BACK AGAINST ITS SPRING AND RELEASE. LATCH MUST TRAVEL BACK 1/4" UNDER ITS OWN SPRING TENSION.

INTERPRET DRAWING PER ASME Y14.5M-1994
DIMENSIONAL LIMITS APPLY AFTER APPLICATION OF FINISH
DRAWING NOT TO SCALE
TOLERANCE UNLESS OTHERWISE NOTED:
ANGULAR +/- 1°
.XXXX +/- .010
.XXX +/- .015
.XX +/- .030
.X FOR REF. ONLY

**NOTICE:**  
Use of this document is subject to a confidentiality and nondisclosure agreement with Great Lakes Case & Cabinet Co., Inc. (GLCC) and may not be reproduced, disclosed or utilized in whole or in part without prior written authorization from GLCC.

PART NUMBER:	<b>4810321ELSX100</b>
QTY PER UNIT:	1
MATERIAL TYPE:	-
MATERIAL GAUGE:	-
FINISH:	-
DRAWN	DATE
JAL	6/9/2003
CHECKED & APP.	DATE
CA	6-9-03

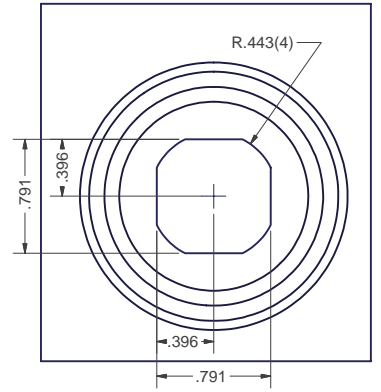
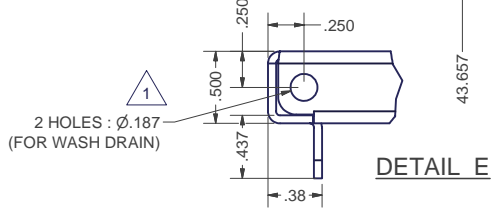
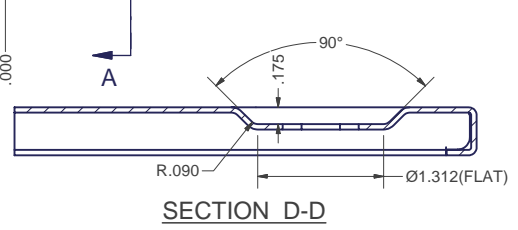
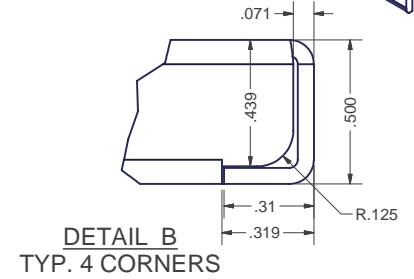
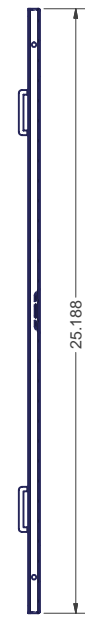
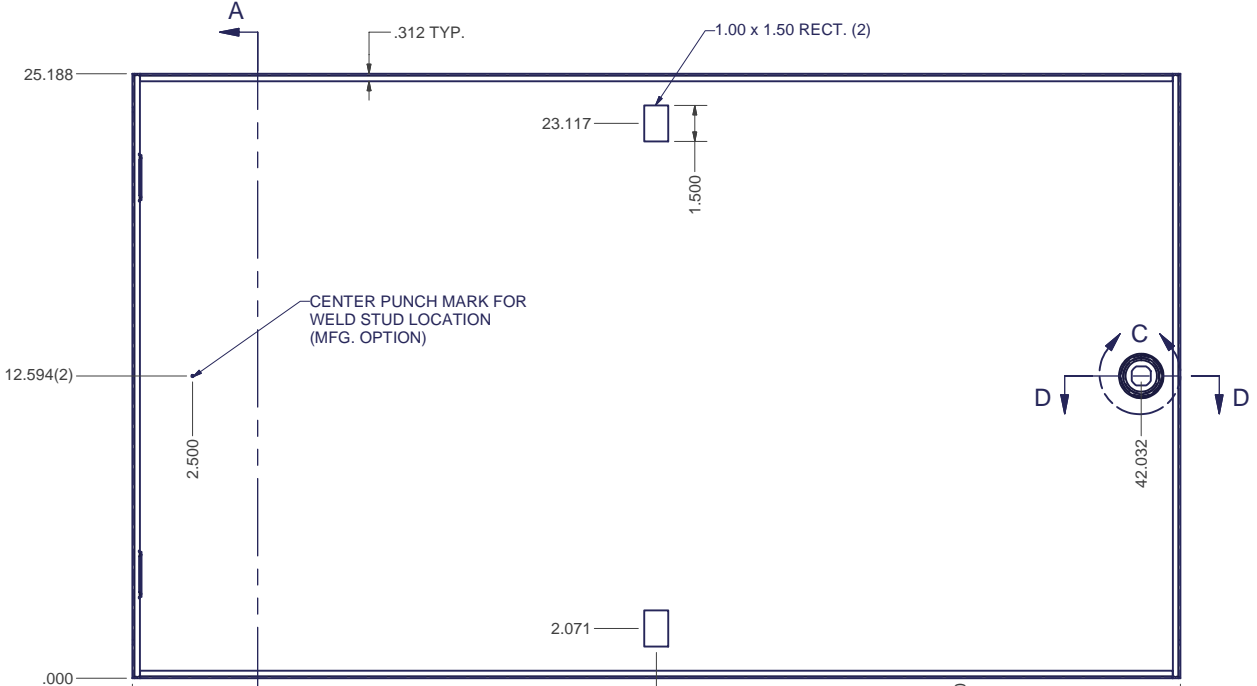
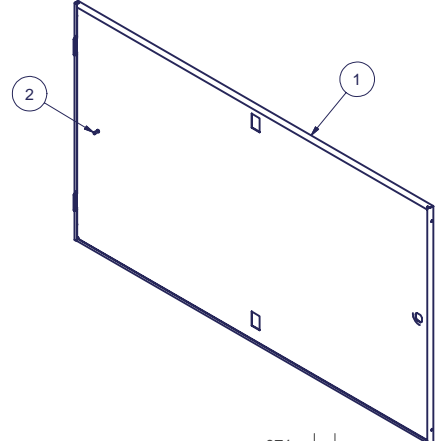
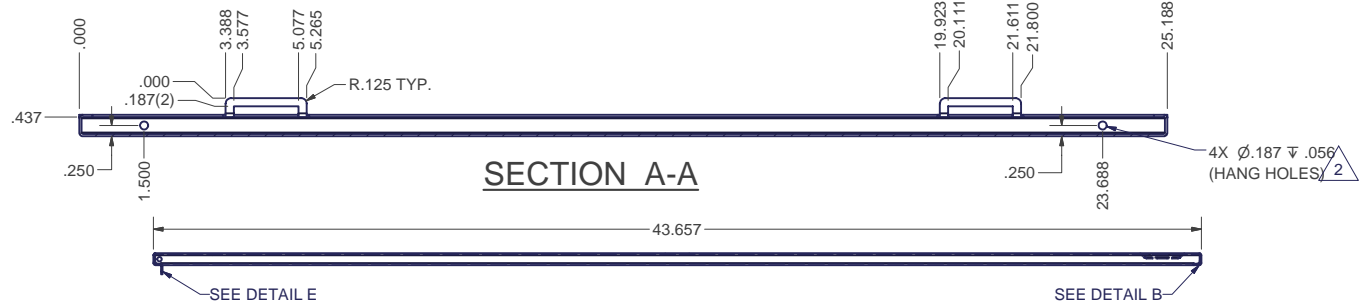
TITLE	<b>SIDE PANEL, SOLID, LIFT-OFF, ASSEMBLY FOR 48H x 32D</b>	
<b>GREAT LAKES CASE &amp; CABINET CO., INC.</b>		
P.O. BOX 551 EDINBORO, PA 16412 PHONE (814) 734-7303 FAX (814) 734-3907 E-MAIL glcc@greatcabinets.com		
DWG NO:	REV	SHEET: 1 OF 1
<b>1001408</b>	<b>2</b>	



UNLESS OTHERWISE SPECIFIED ALL DIMENSIONS ARE IN INCHES

REVISION HISTORY			
REV	DESCRIPTION	DATE	APPROVED
1	ECO-01275	7/23/2003	WSS
2	ECO-01681	12/29/2005	WSS

ITEM			Bill of Material		FILE NAME	REVISION
ITEM	PART NUMBER	QTY	DESCRIPTION			
1		1	SIDE PANEL, SOLID, LIFTOFF, FOR 48H x 32D E CABINET		1001409.ipt	2
2	101208260	1	#10-32 x 1/2" L WELD STUD (NELSON)		101208260.ipt	-



**SPECIAL NOTES:**  
 1. FINISH PER TD-09-103 (POWDER COAT), CLASS B, TEXTURE LEVEL 3, - ALL SURFACES UNLESS OTHERWISE NOTED.  
 2. DIMENSIONS APPLY AFTER APPLICATION OF FINISH.  
 3. ALL BENDS 90° UNLESS OTHERWISE SPECIFIED.  
 4. TYPICAL BEND RADIUS = 0.030  
 5. INSTALL ITEM 2 ON CENTER PUNCH



INTERPRET DRAWING PER ASME Y14.5M-1994
DIMENSIONAL LIMITS APPLY AFTER APPLICATION OF FINISH
DRAWING NOT TO SCALE
TOLERANCE UNLESS OTHERWISE NOTED: ANGULAR +/- 1° .XXXX +/- .010 .XXX +/- .015 .XX +/- .030 .X FOR REF. ONLY
UNLESS OTHERWISE SPECIFIED ALL DIMENSIONS ARE IN INCHES

**NOTICE:**  
 Use of this document is subject to a confidentiality and nondisclosure agreement with Great Lakes Case & Cabinet Co., Inc. (GLCC) and may not be reproduced, disclosed or utilized in whole or in part without prior written authorization from GLCC.

PART NUMBER:	
QTY PER UNIT:	1
MATERIAL TYPE:	CRS
MATERIAL GAUGE:	16 GA
FINISH:	SEE NOTES
DRAWN:	JAL
CHECKED & APP.:	CA
DATE:	3/28/2003
DATE:	6-9-03

TITLE		SIDE PANEL, SOLID, LIFTOFF, FOR 48H x 32D E CABINET	
GREAT LAKES CASE & CABINET CO., INC.			
P.O. BOX 551 EDINBORO, PA 16412			
PHONE (814) 734-7303 FAX (814) 734-3907			
E-MAIL glcc@greatcabinets.com			
DWG NO:	1001409	REV	2
SHEET: 1 OF 1			