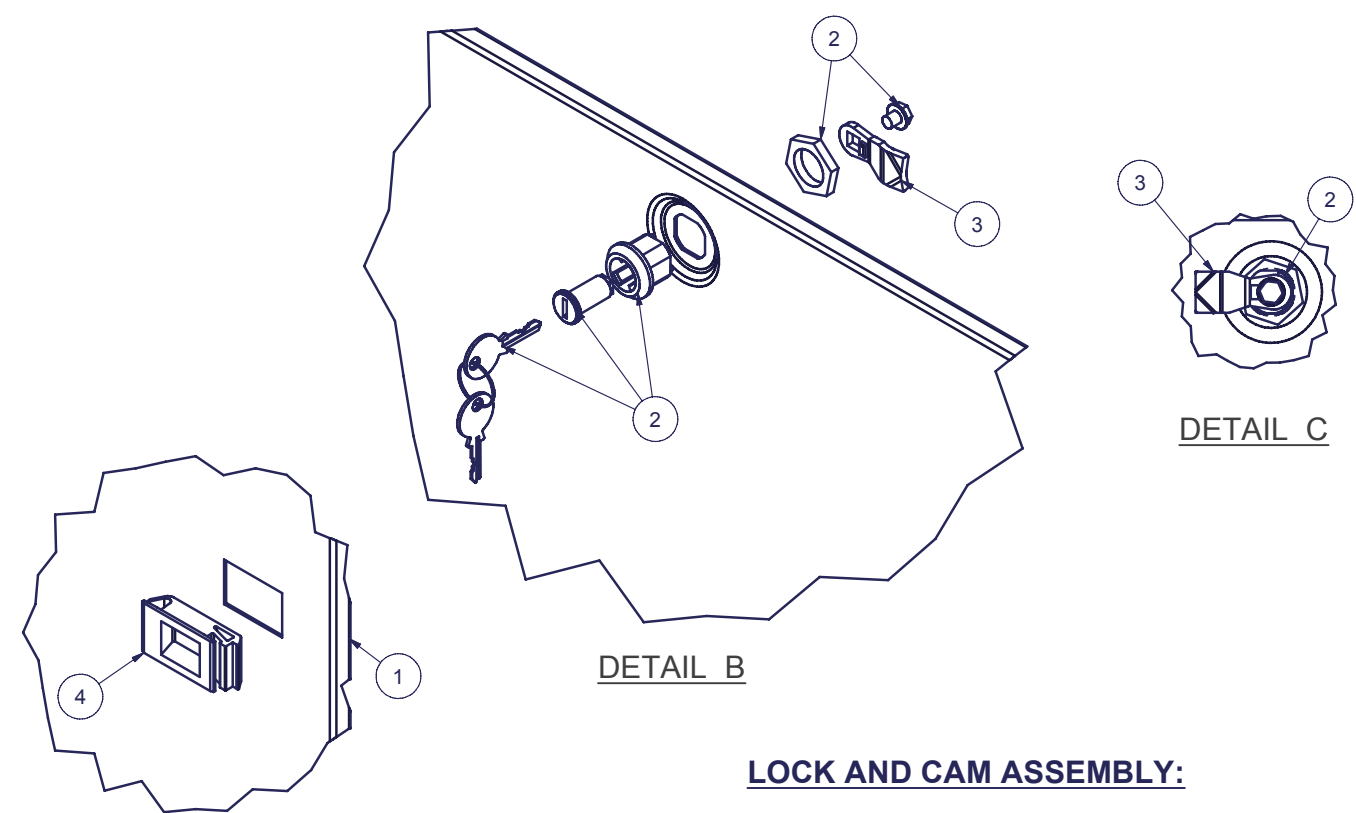
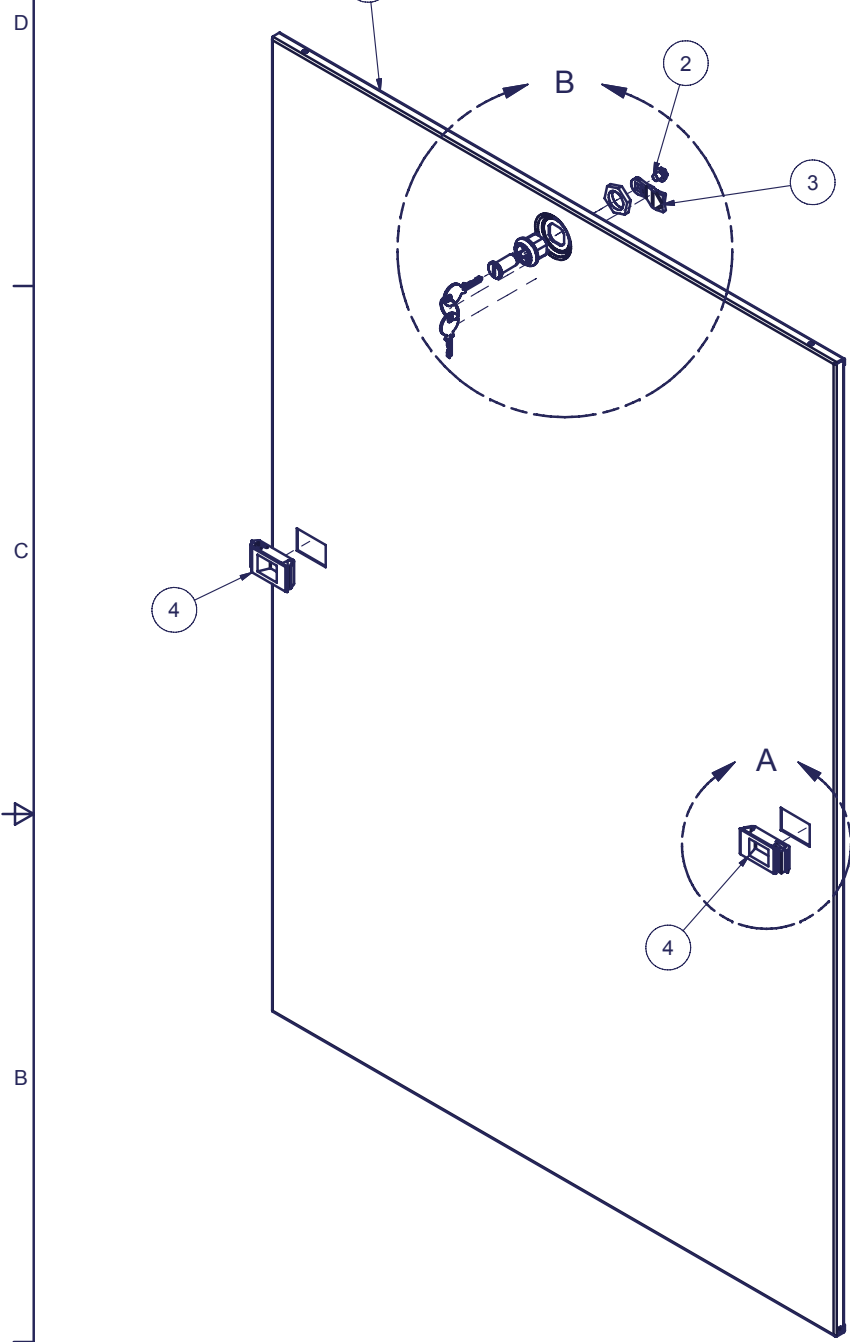


REVISION HISTORY			
REV	DESCRIPTION	DATE	APPROVED
0	ECO-01322	11/3/2003	WSS
1	ECO-01681	12/30/2005	WSS

Bill of Material					
ITEM	PART NUMBER	QTY	DESCRIPTION	FILE NAME	REVISION
1		1	SIDE PANEL, SOLID, LIFTOFF, FOR 48H x 36D E CABINET	I001762.iam	1
2	10117-32728	1	Austin 10117-32728 Black Lock, or PENN, KEY 1333	10117-32728.iam	-
3	2000614	1	LOCK CAM, 14mm GRIP, L=35mm, ZN. PL. DIRAK or EQUIV.	2000614.ipt	-
4	A34062512	2	SOUTHCO SLIDE LATCH, FLUSH	A34062512.ipt	-



**DETAIL A**  
TYP 2 PLACES

**LATCH ASSEMBLY:**

1. SLIP FRONT OF LATCH (OPPOSITE END WITH SPRING) THROUGH HOLE IN SIDE PANEL
2. SNAP BACK END OF LATCH INTO POSITION.
3. LATCH MUST TRAVEL FREELY ONCE INSTALLED - PULL LATCH BACK AGAINST ITS SPRING AND RELEASE. LATCH MUST TRAVEL BACK 1/4" UNDER ITS OWN SPRING TENSION.

**LOCK AND CAM ASSEMBLY:**

1. DO NOT REMOVE KEY FROM LOCK CYLINDER WHEN CYLINDER IS NOT IN THE LOCK HOUSING, LOCK MECHANISM WILL BE DESTROYED.
2. POSITION LOCK HOUSING AS SHOWN IN DETAIL C - NOTE ORIENTATION OF NOTCH ON ITS INSIDE SURFACE AND THE ORIENTATION OF THE KEY IN CYLINDER.
3. SECURE LOCK HOUSING WITH NUT.
4. POSITION CAM AS SHOWN AND SECURE WITH SCREW.
5. TURN KEY TO VERIFY SMOOTH OPERATION OF LOCK.

**SPECIAL NOTES:**  
1. REFER TO PURCHASE ORDER - SPECIAL INSTRUCTIONS MAY APPLY.

INTERPRET DRAWING PER ASME Y14.5M-1994
DIMENSIONAL LIMITS APPLY AFTER APPLICATION OF FINISH
DRAWING NOT TO SCALE
TOLERANCE UNLESS OTHERWISE NOTED:
ANGULAR +/- 1°
.XXXX +/- .010
.XXX +/- .015
.XX +/- .030
.X FOR REF. ONLY
UNLESS OTHERWISE SPECIFIED ALL DIMENSIONS ARE IN INCHES

**NOTICE:**  
Use of this document is subject to a confidentiality and nondisclosure agreement with Great Lakes Case & Cabinet Co., Inc. (GLCC) and may not be reproduced, disclosed or utilized in whole or in part without prior written authorization from GLCC.

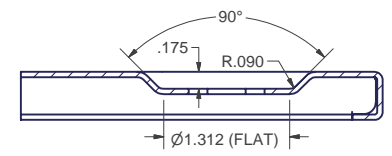
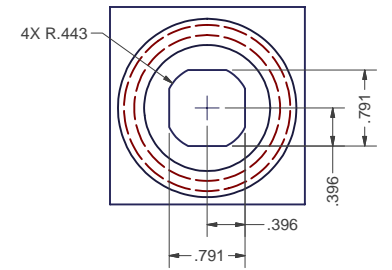
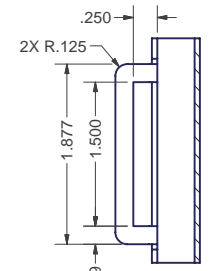
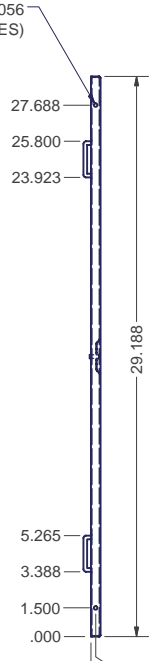
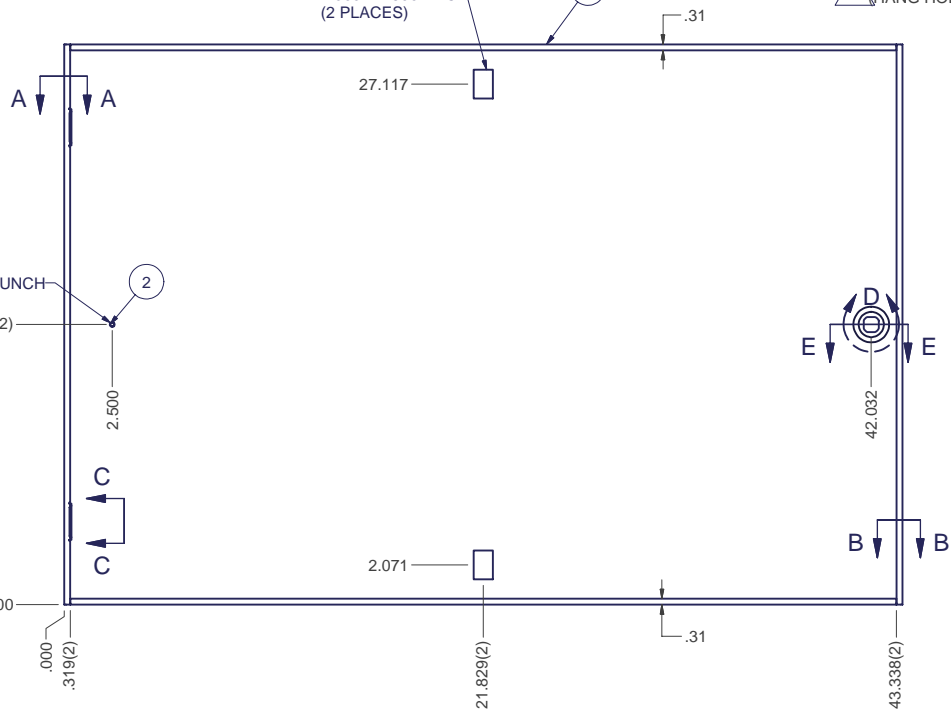
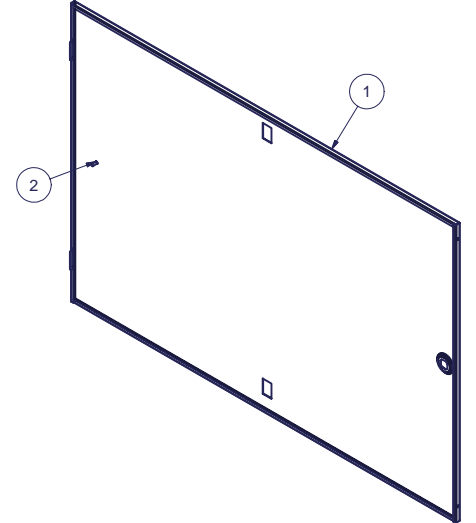
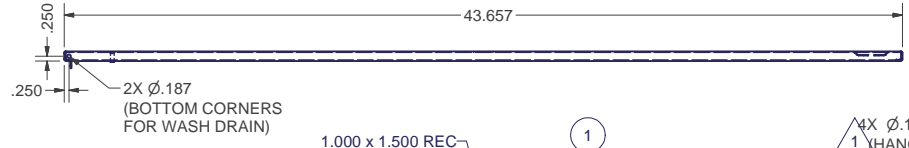
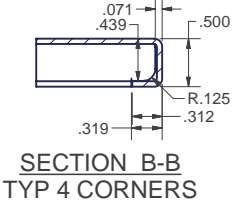
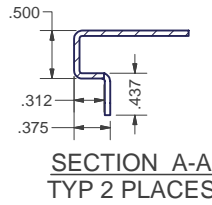
PART NUMBER: <b>4810361ELSX100</b>
QTY PER UNIT: 1
MATERIAL TYPE: -
MATERIAL GAUGE: -
FINISH: -
DRAWN: CA DATE: 10/30/2003
CHECKED & APP. DATE: WSS 11-3-03

TITLE <b>SIDE PANEL, SOLID, LIFT-OFF, ASSEMBLY FOR 48H x 36D</b>	
GREAT LAKES CASE & CABINET CO., INC. P.O. BOX 551 EDINBORO, PA 16412 PHONE (814) 734-7303 FAX (814) 734-3907 E-MAIL glcc@greatcabinets.com	
DWG NO: <b>I001761</b>	REV <b>1</b>
SHEET: 1 OF 1	



REVISION HISTORY			
REV	DESCRIPTION	DATE	APPROVED
0	ECO-01322	11/3/2003	WSS
1	ECO-01681	12/30/2005	WSS

Bill of Material					
ITEM	PART NUMBER	QTY	DESCRIPTION	FILE NAME	REVISION
1		1	SIDE PANEL, SOLID, LIFTOFF, FOR 48H x 36D E CABINET	I001762.ipt	1
2	101208260	1	#10-32 x 1/2"L WELD STUD (NELSON)	101208260.ipt	-



- SPECIAL NOTES:**
1. PREPARE THREADS PRIOR TO AND DURING WELDING PER: TD-09-109
  2. FINISH PER TD-09-103 (POWDER COAT), CLASS B, TEXTURE LEVEL 3, - ALL SURFACES UNLESS OTHERWISE NOTED.
  3. DIMENSIONS APPLY BEFORE APPLICATION OF FINISH: ADD .005" TO EACH SURFACE FOR INSPECTION.
  4. INSTALL WELD STUD ON CENTER PUNCH.
  5. TYPICAL BEND RADIUS = 0.030



INTERPRET DRAWING PER ASME Y14.5M-1994
DIMENSIONAL LIMITS APPLY AFTER APPLICATION OF FINISH
DRAWING NOT TO SCALE
TOLERANCE UNLESS OTHERWISE NOTED:
ANGULAR +/- 1°
.XXXX +/- .010
.XXX +/- .015
.XX +/- .030
.X FOR REF. ONLY
UNLESS OTHERWISE SPECIFIED ALL DIMENSIONS ARE IN INCHES

**NOTICE:**  
Use of this document is subject to a confidentiality and nondisclosure agreement with Great Lakes Case & Cabinet Co., Inc. (GLCC) and may not be reproduced, disclosed or utilized in whole or in part without prior written authorization from GLCC.

PART NUMBER:	
QTY PER UNIT:	1
MATERIAL TYPE:	CRS
MATERIAL GAUGE:	16 GA
FINISH:	SEE NOTES
DRAWN DATE:	CA 10/30/2003
CHECKED & APP. DATE:	WSS 11-3-03

TITLE	SIDE PANEL, SOLID, LIFTOFF, FOR 48H x 36D E CABINET	
GREAT LAKES CASE & CABINET CO., INC.		
P.O. BOX 551 EDINBORO, PA 16412		
PHONE (814) 734-7303 FAX (814) 734-3907		
E-MAIL glcc@greatcabinets.com		
DWG NO:	I001762	REV
		1
SHEET: 1 OF 1		