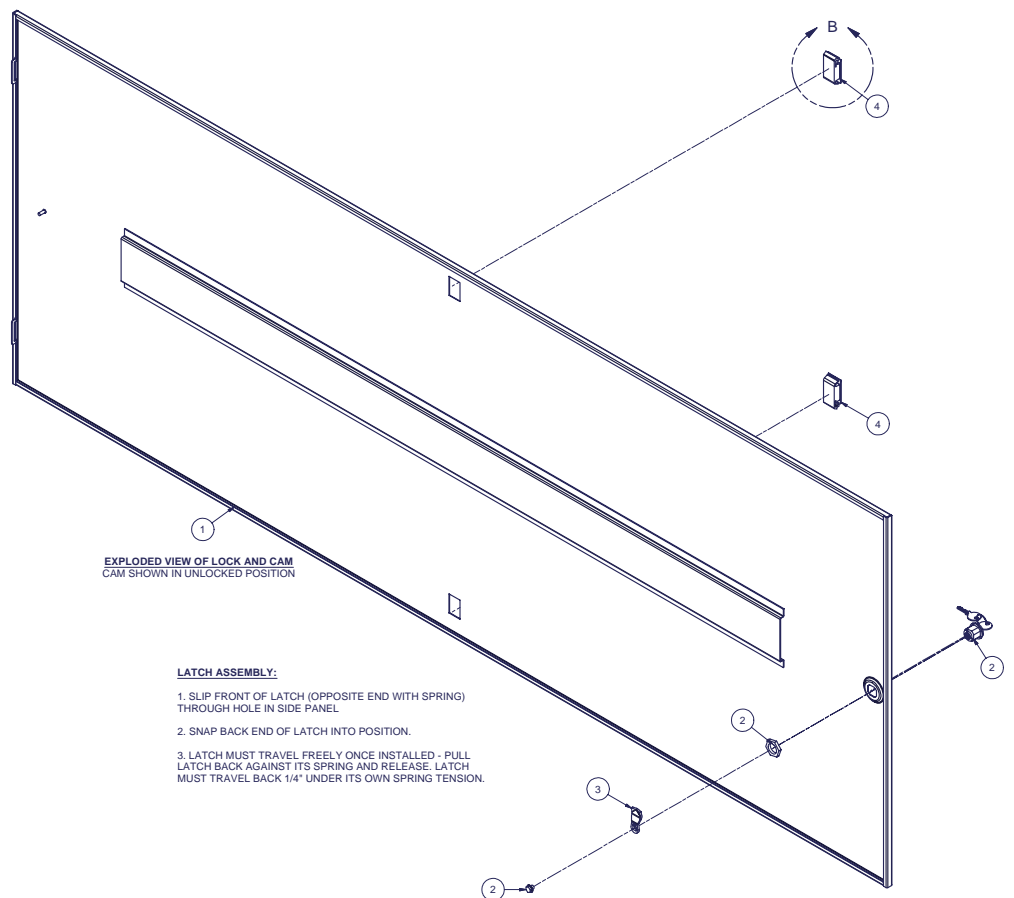
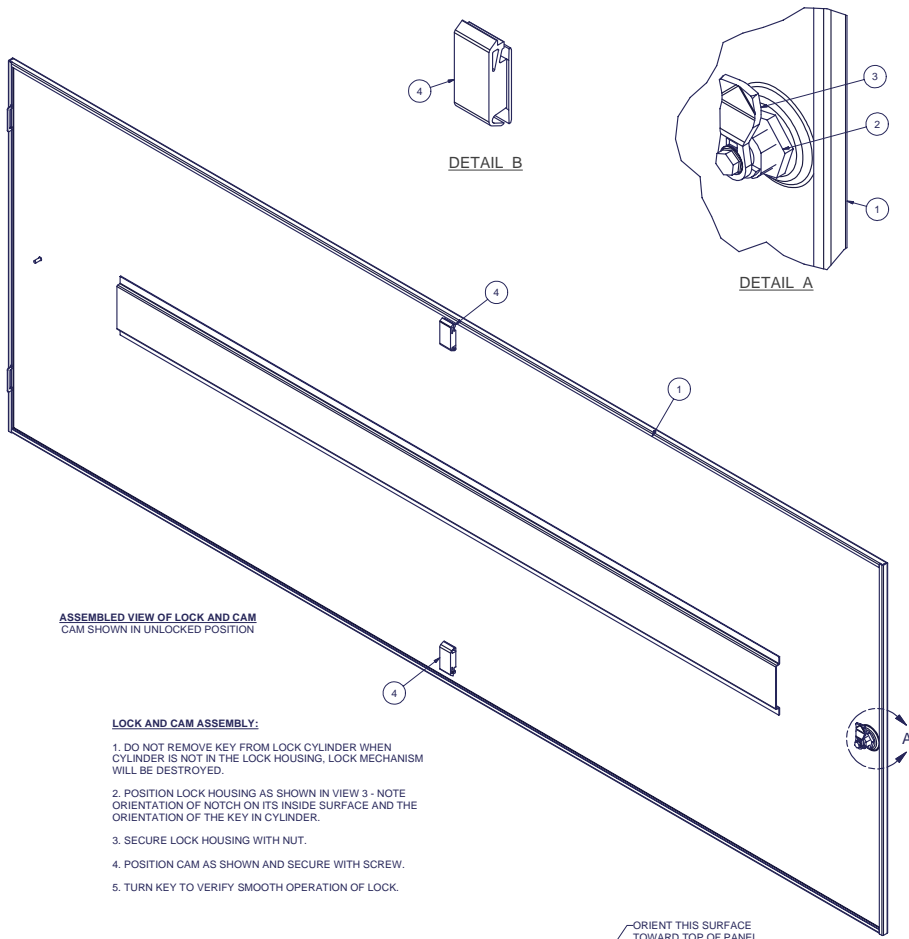


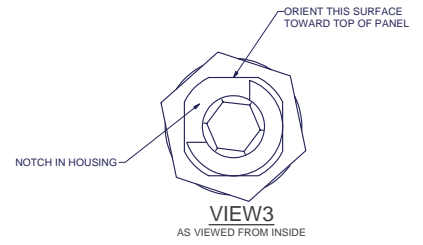
REVISION HISTORY			
REV	DESCRIPTION	DATE	APPROVED
6	ECO-01923	4/19/2007	WSS
7	ECO-02099	12/3/07	WSS
8	ECO-02616	8/3/2009	FED

Bill of Material						
ITEM	PART NUMBER	STOCK NU	QTY	DESCRIPTION	FILE NAME	REVISION
1	-	-	1	SIDE PANEL SOLID LIFT-OFF WELDMENT FOR 84H x 36D E CABINET	1000177.lam	7
2	10117-32728	H19-037	1	Austin 10117-32728 Black Lock, or PENN. KEY 1333	10117-32728.lam	-
3	2000614	H17-010	1	LOCK CAM, 14mm GRIP, L=35mm, ZN. PL. DIRAK or EQUIV.	2000614.ipf	-
4	A34062512	-	2	SOUTHCO SLIDE LATCH, FLUSH	A34062512.ipf	-



- LOCK AND CAM ASSEMBLY:**
- DO NOT REMOVE KEY FROM LOCK CYLINDER WHEN CYLINDER IS NOT IN THE LOCK HOUSING. LOCK MECHANISM WILL BE DESTROYED.
 - POSITION LOCK HOUSING AS SHOWN IN VIEW 3 - NOTE ORIENTATION OF NOTCH ON ITS INSIDE SURFACE AND THE ORIENTATION OF THE KEY IN CYLINDER.
 - SECURE LOCK HOUSING WITH NUT.
 - POSITION CAM AS SHOWN AND SECURE WITH SCREW.
 - TURN KEY TO VERIFY SMOOTH OPERATION OF LOCK.

- LATCH ASSEMBLY:**
- SLIP FRONT OF LATCH (OPPOSITE END WITH SPRING) THROUGH HOLE IN SIDE PANEL.
 - SNAP BACK END OF LATCH INTO POSITION.
 - LATCH MUST TRAVEL FREELY ONCE INSTALLED - PULL LATCH BACK AGAINST ITS SPRING AND RELEASE. LATCH MUST TRAVEL BACK 1/4" UNDER ITS OWN SPRING TENSION.

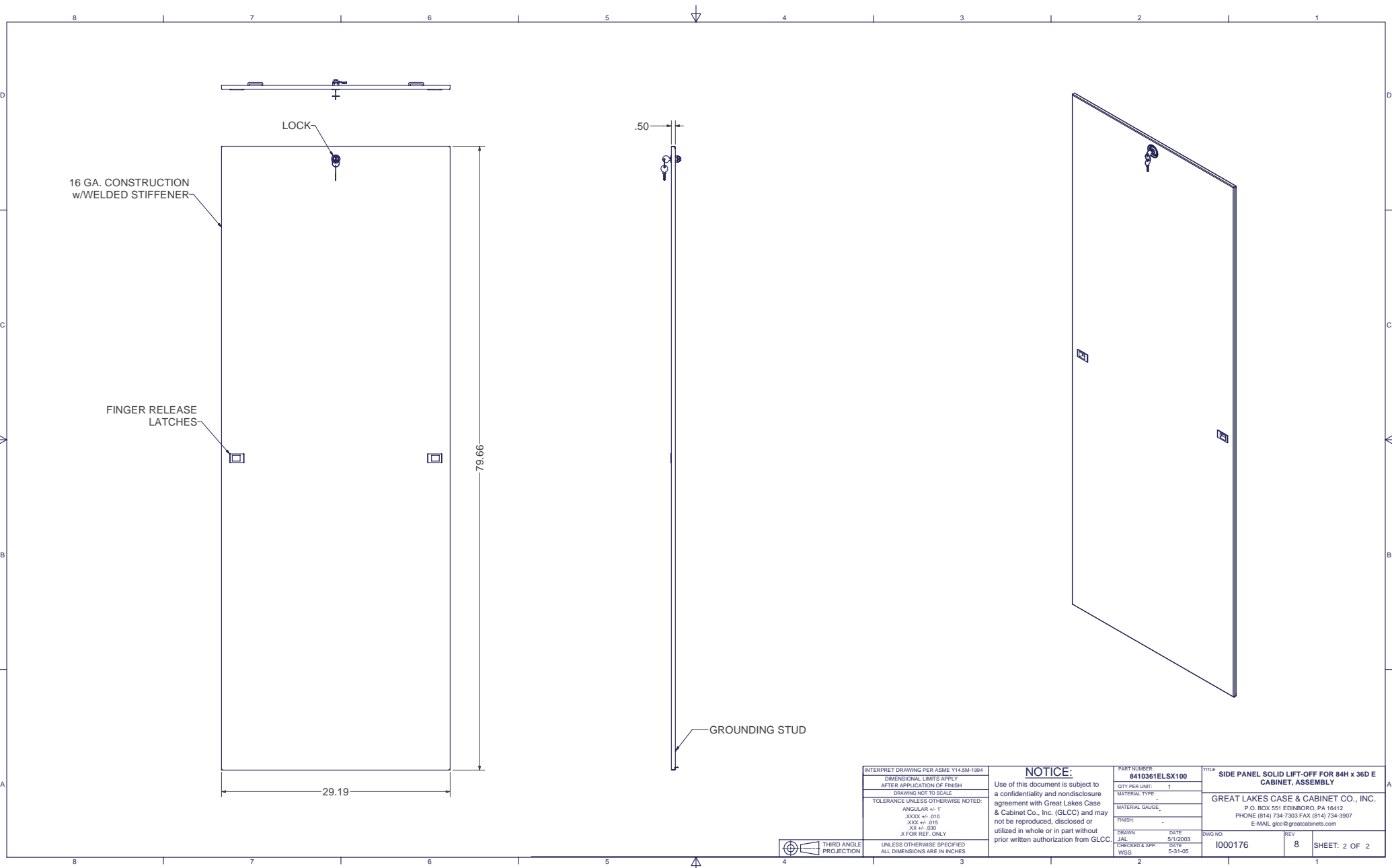


THIRD ANGLE PROJECTION

INTERPRET DRAWING PER ASME Y14.5M-1994
DIMENSIONAL LIMITS APPLY AFTER APPLICATION OF FINISH
DRAWING NOT TO SCALE
TOLERANCE UNLESS OTHERWISE NOTED: ANGULAR ± .1° XXX ± .010 XXX ± .015 XX ± .030 X FOR REF. ONLY
UNLESS OTHERWISE SPECIFIED ALL DIMENSIONS ARE IN INCHES

NOTICE:
Use of this document is subject to a confidentiality and nondisclosure agreement with Great Lakes Case & Cabinet Co., Inc. (GLCC) and may not be reproduced, disclosed or utilized in whole or in part without prior written authorization from GLCC.

PART NUMBER: 8410361EL SX100	TITLE: SIDE PANEL SOLID LIFT-OFF FOR 84H x 36D E CABINET, ASSEMBLY
QTY PER UNIT: 1	MATERIAL TYPE: -
MATERIAL GAUGE: -	FINISH: -
DRAWN: JAL	DATE: 5/1/2003
CHECKED & APP: CA	DATE: 5-1-03
DWG NO: 1000176	REV: 8
SHEET: 1 OF 2	



16 GA. CONSTRUCTION
w/WELDED STIFFENER

LOCK

FINGER RELEASE
LATCHES

79.66

29.19

.50

GROUNDING STUD



INTERPRET DRAWING PER ASME Y14.5M-1994
DIMENSIONAL LIMITS APPLY AFTER APPLICATION OF FINISH
DRAWING NOT TO SCALE
TOLERANCE UNLESS OTHERWISE NOTED: ANGULAR ± .1° XXX ± .010 XXX ± .015 XX ± .030 X FOR REF. ONLY
UNLESS OTHERWISE SPECIFIED ALL DIMENSIONS ARE IN INCHES

NOTICE:
Use of this document is subject to a confidentiality and nondisclosure agreement with Great Lakes Case & Cabinet Co., Inc. (GLCC) and may not be reproduced, disclosed or utilized in whole or in part without prior written authorization from GLCC.

PART NUMBER: 8410361EL SX100
QTY PER UNIT: 1
MATERIAL TYPE:
MATERIAL GAUGE:
FINISH:
DRAWN: JAL DATE: 5/1/2003
CHECKED & APP: WSS DATE: 5-31-05

TITLE: SIDE PANEL SOLID LIFT-OFF FOR 84H x 36D E CABINET, ASSEMBLY
GREAT LAKES CASE & CABINET CO., INC. P.O. BOX 551 EDINBORO, PA 16412 PHONE (814) 734-7303 FAX (814) 734-2907 E-MAIL glcc@greatscabinets.com
DWG NO: 1000176
REV: 8
SHEET: 2 OF 2