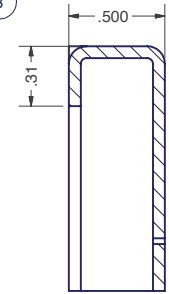
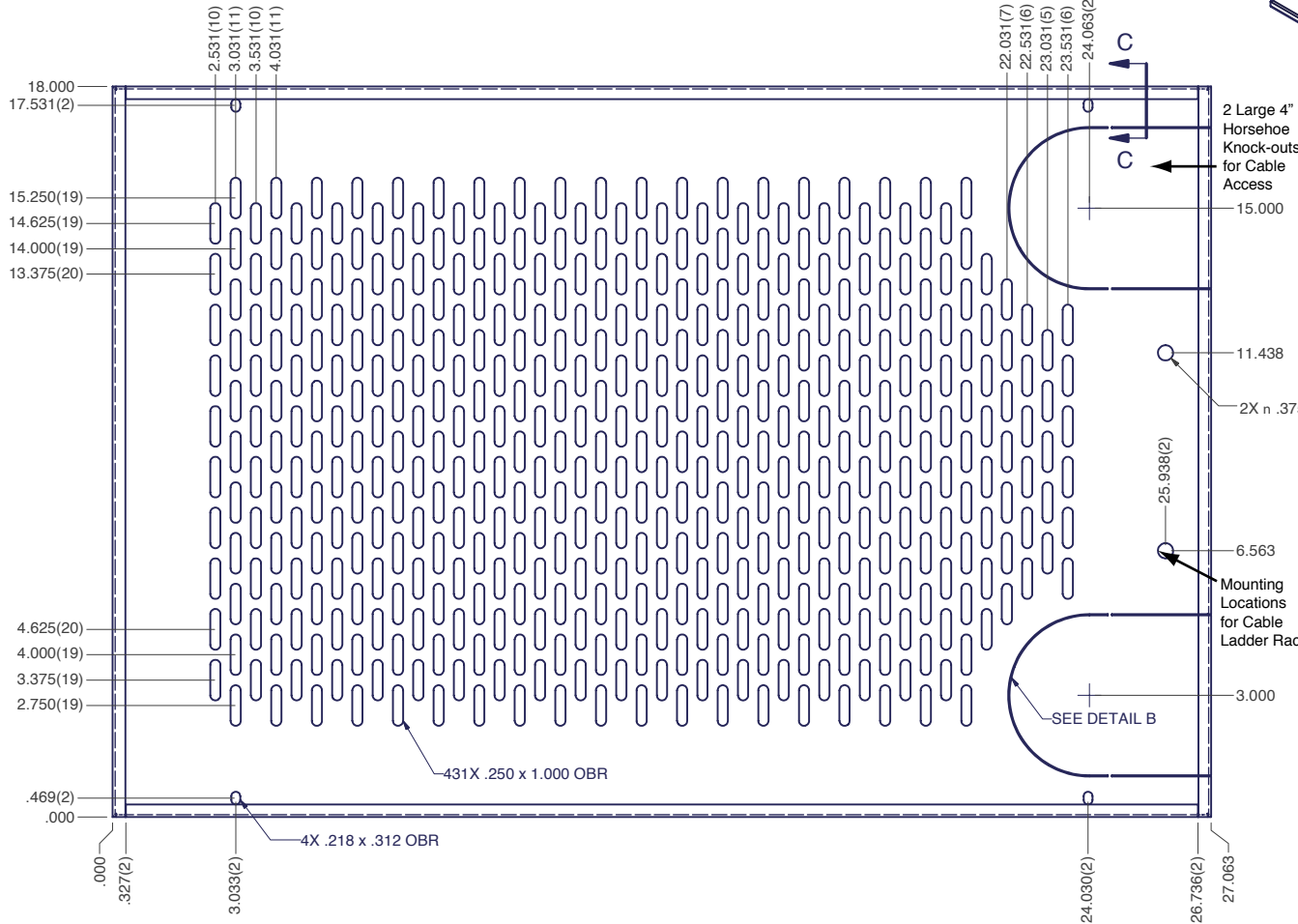
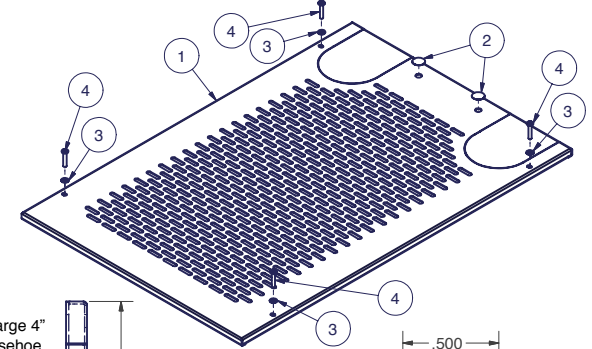


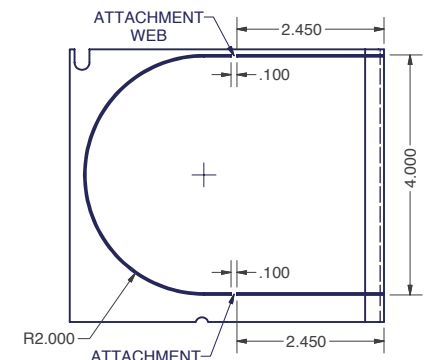
DETAIL A
TYP 4 CORNERS



Bill of Material					
ITEM	PART NUMBER	QTY	DESCRIPTION	FILE NAME	REVISION
1	-	1	24" WIDE ENHANCED PERF TOP PANEL	1001193.ipt	0
2	BPF375	2	BUTTON PLUG, FLUSH TYPE - BLACK	BPF375.ipt	-
3	17W04379B	4	BLACK NYLON WASHER (.196 DIA x .437 DIA)	17W04379B.ipt	-
4	SCR1032X1BLK23	4	#10-32 x 1" PAN HEAD PHIL TYPE 23, BLACK	SCR1032X1BLK23.ipt	-



SECTION C-C
TYP 4 SIDES



DETAIL B
TYP 2 PLACES

Note: Durable Powder Coat Finish

INTERPRET DRAWING PER ASME Y14.5M-1994
DIMENSIONAL LIMITS APPLY AFTER APPLICATION OF FINISH
DRAWING NOT TO SCALE
TOLERANCE UNLESS OTHERWISE NOTED:
ANGULAR +/- 1-
.XXXX +/- .010
.XXX +/- .015
.XX +/- .030
.X FOR REF. ONLY

NOTICE:
Use of this document is subject to a confidentiality and nondisclosure agreement with Great Lakes Case & Cabinet Co., Inc. (GLCC) and may not be reproduced, disclosed or utilized in whole or in part without prior written authorization from GLCC.

PART NUMBER: TPE24P	TITLE 24" WIDE ENHANCED PERF TOP PANEL
QTY PER UNIT: 1	GREAT LAKES CASE & CABINET CO., INC. P.O. BOX 551 EDINBORO, PA 16412 PHONE (814) 734-7303 FAX (814) 734-3907 E-MAIL glcc@greatcabinets.com
MATERIAL TYPE: CRS	
MATERIAL GAUGE: 16 GA	
FINISH: SEE NOTES	DWG NO: 1001193
DRAWN CA	DATE 2/27/2003
CHECKED & APP. AL	DATE 2-27-03

REV 0	SHEET: 1 OF 1
-----------------	---------------



THIRD ANGLE PROJECTION

UNLESS OTHERWISE SPECIFIED ALL DIMENSIONS ARE IN INCHES