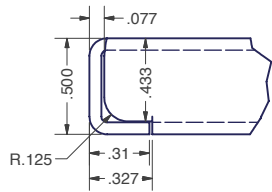
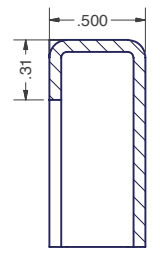
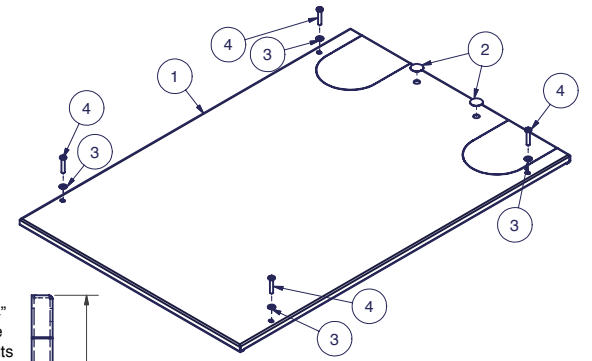
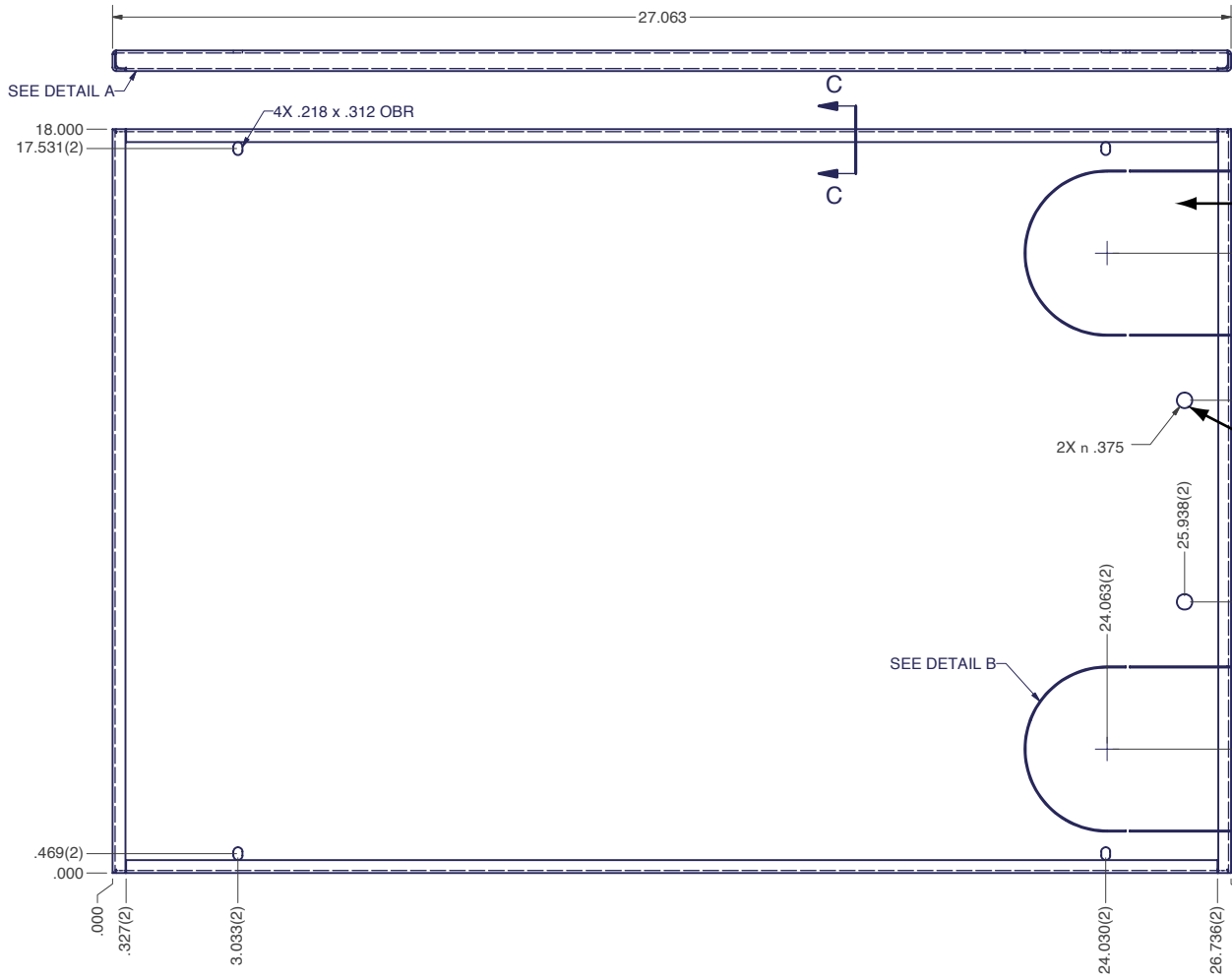


COMPLETE REDESIGN

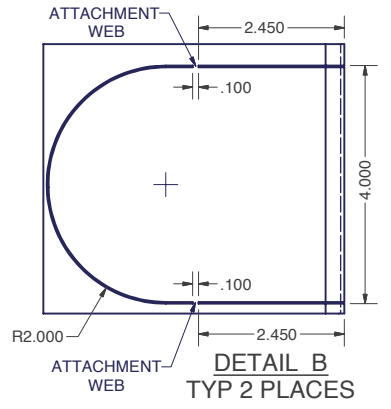


DETAIL A
TYP 4 CORNERS

Bill of Material					
ITEM	PART NUMBER	QTY	DESCRIPTION	FILE NAME	REVISION
1	-	1	24" WIDE ENHANCED SOLID TOP PANEL	I000215.ipt	7
2	BPF375	2	BUTTON PLUG, FLUSH TYPE - BLACK	BPF375.ipt	-
3	17W04379B	4	BLACK NYLON WASHER (.196 DIA x .437 DIA)	17W04379B.ipt	-
4	SCR1032X1BLK23	4	#10-32 x 1" L PAN HEAD PHIL TYPE 23, BLACK	SCR1032X1BLK23.ipt	-



SECTION C-C
TYP 4 SIDES



DETAIL B
TYP 2 PLACES

Note: Durable Powder Coat Finish

<p>INTERPRET DRAWING PER ASME Y14.5M-1994</p> <p>DIMENSIONAL LIMITS APPLY AFTER APPLICATION OF FINISH</p> <p>DRAWING NOT TO SCALE</p> <p>TOLERANCE UNLESS OTHERWISE NOTED:</p> <p>ANGULAR +/- 1-</p> <p>.XXXX +/- .010</p> <p>.XXX +/- .015</p> <p>.XX +/- .030</p> <p>.X FOR REF. ONLY</p>	<p>UNLESS OTHERWISE SPECIFIED ALL DIMENSIONS ARE IN INCHES</p>
---	--

NOTICE:

Use of this document is subject to a confidentiality and nondisclosure agreement with Great Lakes Case & Cabinet Co., Inc. (GLCC) and may not be reproduced, disclosed or utilized in whole or in part without prior written authorization from GLCC.

PART NUMBER:	TPE24S
QTY PER UNIT:	1
MATERIAL TYPE:	CRS
MATERIAL GAUGE:	16 GA
FINISH:	SEE NOTES
DRAWN	DATE
CA	2/26/2003
CHECKED & APP.	DATE
AL	2-27-03

TITLE	24" WIDE ENHANCED SOLID TOP PANEL	
GREAT LAKES CASE & CABINET CO., INC.		
P.O. BOX 551 EDINBORO, PA 16412		
PHONE (814) 734-7303 FAX (814) 734-3907		
E-MAIL glcc@greatcabinets.com		
DWG NO:	I000215	REV
		7
SHEET: 1 OF 1		



THIRD ANGLE PROJECTION