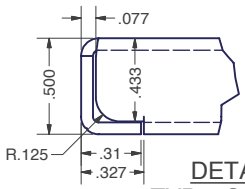
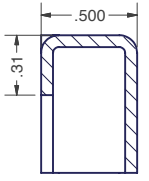
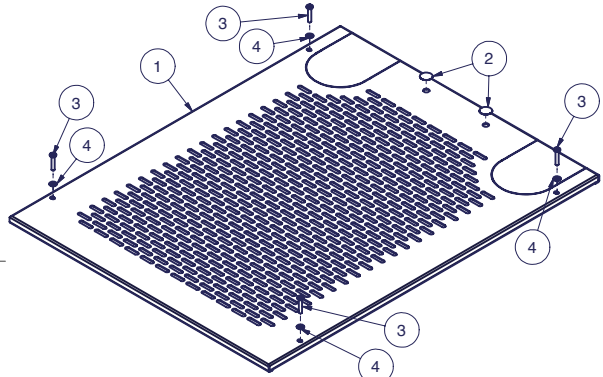


COMPLETE REDESIGN

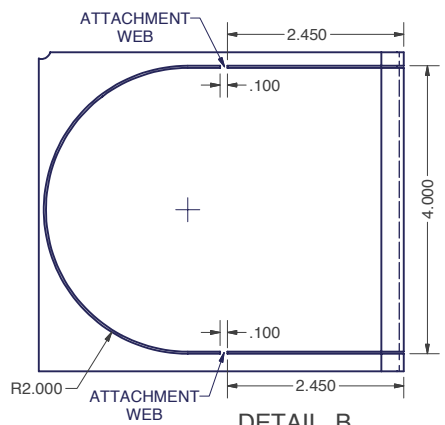
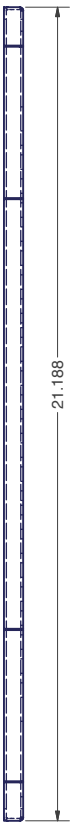
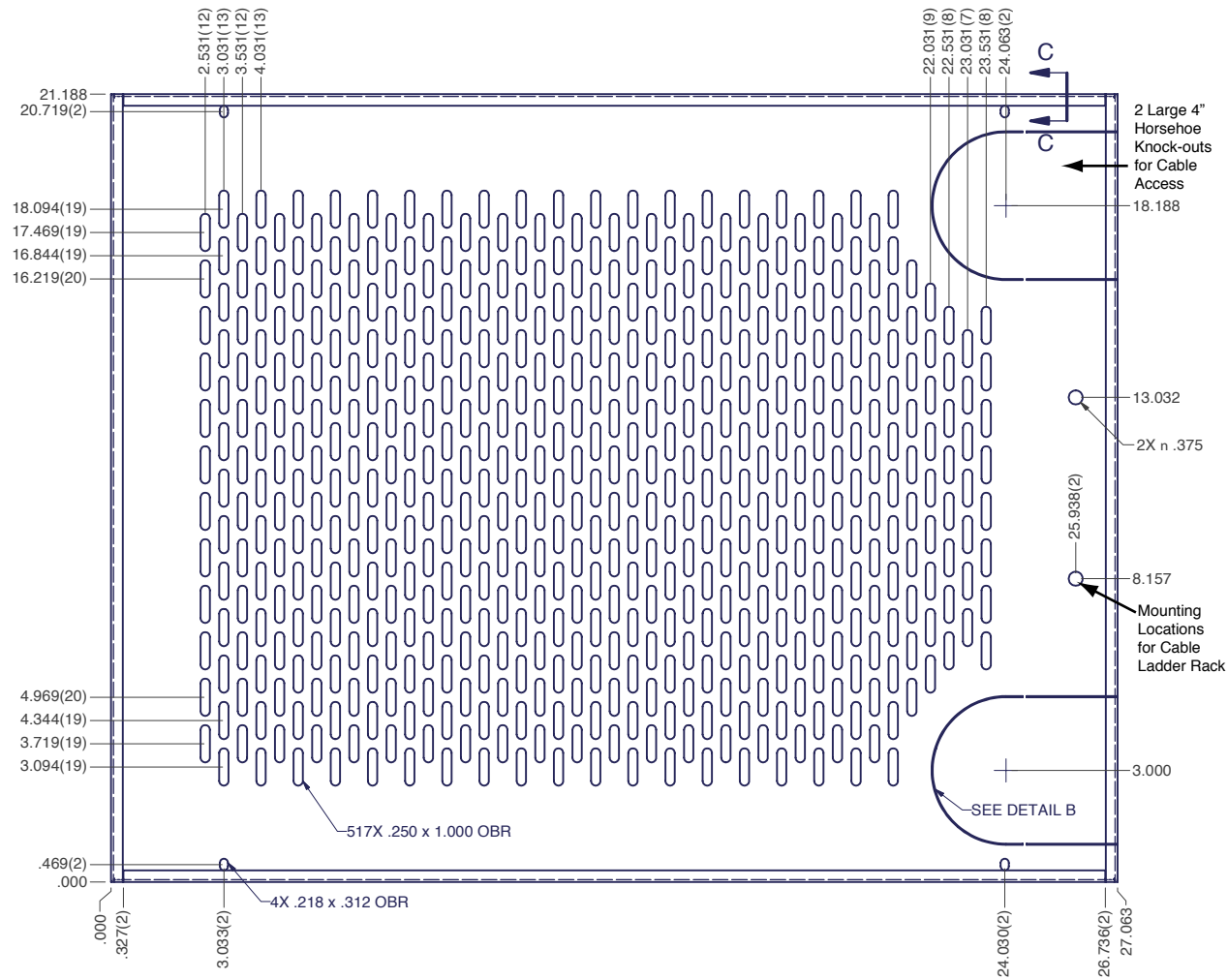


DETAIL A
TYP 4 CORNERS

Bill of Material					
ITEM	PART NUMBER	QTY	DESCRIPTION	FILE NAME	REVISION
1	-	1	29" WIDE ENHANCED PERF TOP PANEL	I000019.ipt	2
2	BPF375	2	BUTTON PLUG, FLUSH TYPE - BLACK	BPF375.ipt	-
3	SCR1032X1BLK23	4	#10-32 x 1"L PAN HEAD PHIL TYPE 23, BLACK	SCR1032X1BLK23.ipt	-
4	17W04379B	4	BLACK NYLON WASHER (.196 DIA x .437 DIA)	17W04379B.ipt	-



SECTION C-C
TYP 4 SIDES



DETAIL B
TYP 2 PLACES

Note: Durable Powder Coat Finish

INTERPRET DRAWING PER ASME Y14.5M-1994
DIMENSIONAL LIMITS APPLY AFTER APPLICATION OF FINISH
DRAWING NOT TO SCALE
TOLERANCE UNLESS OTHERWISE NOTED:
ANGULAR +/- 1-
.XXXX +/- .010
.XXX +/- .015
.XX +/- .030
.X FOR REF. ONLY
UNLESS OTHERWISE SPECIFIED ALL DIMENSIONS ARE IN INCHES

NOTICE:
Use of this document is subject to a confidentiality and nondisclosure agreement with Great Lakes Case & Cabinet Co., Inc. (GLCC) and may not be reproduced, disclosed or utilized in whole or in part without prior written authorization from GLCC.

PART NUMBER:	TPE29P
QTY PER UNIT:	1
MATERIAL TYPE:	CRS
MATERIAL GAUGE:	16 GA
FINISH:	SEE NOTES
DRAWN:	DATE
CA	2/26/2003
CHECKED & APP.	DATE
AL	2-28-03

TITLE		29" WIDE ENHANCED PERF TOP PANEL	
GREAT LAKES CASE & CABINET CO., INC.			
P.O. BOX 551 EDINBORO, PA 16412			
PHONE (814) 734-7303 FAX (814) 734-3907			
E-MAIL glcc@greatcabinets.com			
DWG NO:	I000019	REV	2
SHEET: 1 OF 1			



THIRD ANGLE PROJECTION